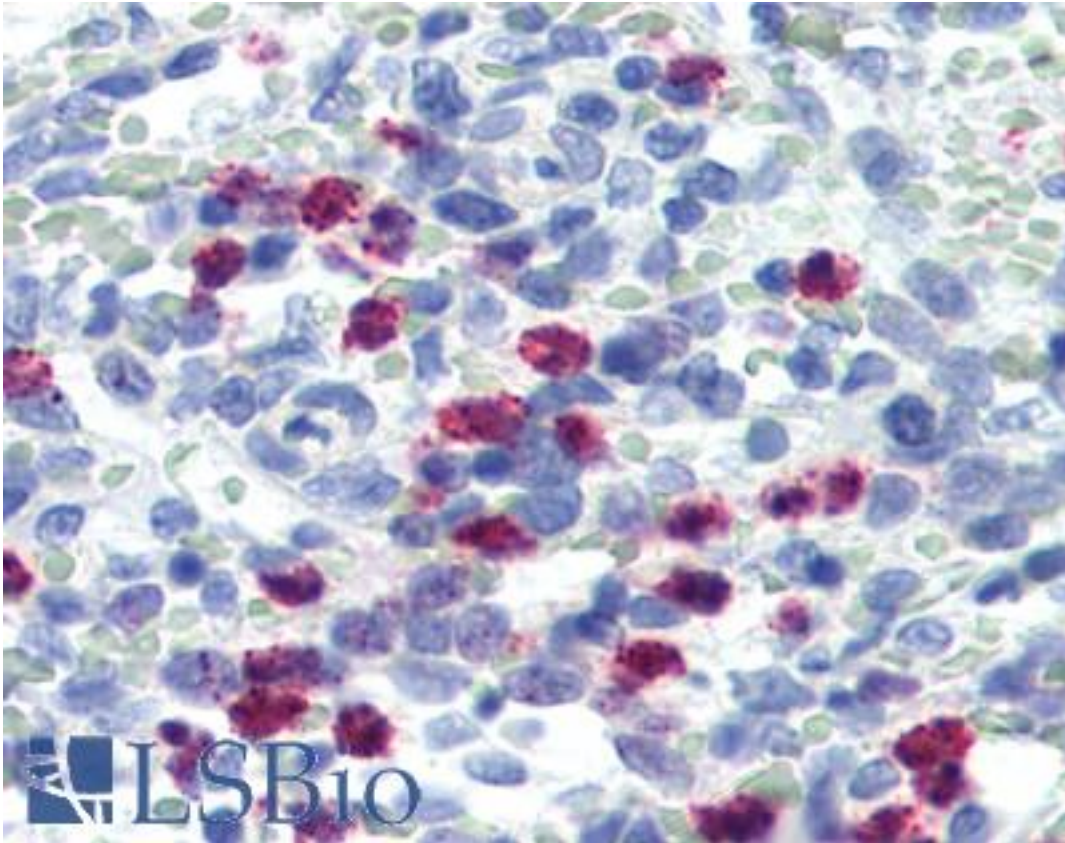


FBXW7 / FBW7 Rabbit anti-Human Polyclonal (Internal) Antibody - LS-B2909 - LSBio	
<b>CatalogID:</b>	LS-B2909
<b>Validation:</b>	This antibody replaces catalog number LS-C14412. It has been validated for use in the following assays: IHC-P.
<b>Target:</b>	F-box and WD repeat domain containing 7, E3 ubiquitin protein ligase (FBXW7)
<b>Synonyms:</b>	FBXW7 Antibody, AGO Antibody, Archipelago homolog Antibody, Archipelago Antibody, CDC4 Antibody, F-box protein FBW7 Antibody, FBXW6 Antibody, F-box protein FBX30 Antibody, F-box protein SEL-10 Antibody, HCdc4 Antibody, Homolog of C elegans sel-10 Antibody, FBW6 Antibody, FBX30 Antibody, FBW7 Antibody, HAgo Antibody, SEL-10 Antibody, SEL10 Antibody
<b>Family / Subfamily:</b>	F-Box
<b>Host</b>	FBXW7 antibody was produced in Rabbit
<b>Clonality:</b>	Polyclonal
<b>Isotype:</b>	IgG
<b>Immunogen Species:</b>	FBXW7 / FBW7 antibody was raised against Human
<b>Antigen Type:</b>	Synthetic peptide
<b>Immunogen:</b>	FBXW7 / FBW7 antibody was raised against synthetic peptide derived from an internal region of the human and mouse Cdc4 (archipelago (AGO), F-box/WD-repeat protein 7, F-box and WD-40 domain protein 7, F-box protein FBW7, FBX30 and SEL-10).
<b>Specificity:</b>	Recognizes human Cdc4 protein at ~60-80kD. Multiple bands may represent various isoforms. Species sequence homology: mouse 100%.
<b>Epitope:</b>	Internal
<b>Reactivity:</b>	Human, Mouse
<b>Purification:</b>	Immunoaffinity purified
<b>Presentation:</b>	PBS, pH 7.4, 0.1% sodium azide.
<b>Recommended Storage:</b>	Long term: -20°C; Short term: +4°C; Avoid freeze-thaw cycles.
<b>Usage Summary:</b>	Immunohistochemistry: LS-B2909 was validated for use in immunohistochemistry on a panel of 21 formalin-fixed, paraffin-embedded (FFPE) human tissues after heat induced antigen retrieval in pH 6.0 citrate buffer. After incubation with the primary antibody, slides were incubated with biotinylated secondary antibody, followed by alkaline phosphatase-streptavidin and chromogen. The stained slides were evaluated by a pathologist to confirm staining specificity. The optimal working concentration for LS-B2909 was determined to be 5 ug/ml. Immunoprecipitation: 7 ug/reaction. Positive control: Human T47D, U2-OS, MCF-7, HepG2 and HeLa cell lysates.
<b>Uses:</b>	IHC - Paraffin (5 µg/ml), Western blot (1 - 3 µg/ml), Immunoprecipitation (Optimal dilution to be determined by the researcher)
<b>Size:</b>	50 µg
<b>Concentration:</b>	0.25 mg/ml

**Immunohistochemistry Image:**



Anti-FBXW7 antibody IHC of human spleen. Immunohistochemistry of formalin-fixed, paraffin-embedded tissue after heat-induced antigen retrieval. Antibody LS-B2909 concentration 5 ug/ml.

**Requested From:**

Japan

Laboratory Reagent For In Vitro Research Use Only

Not for resale without prior written consent from LifeSpan BioSciences, Inc.

Created on 9/23/2014

© 2014 LifeSpan BioSciences