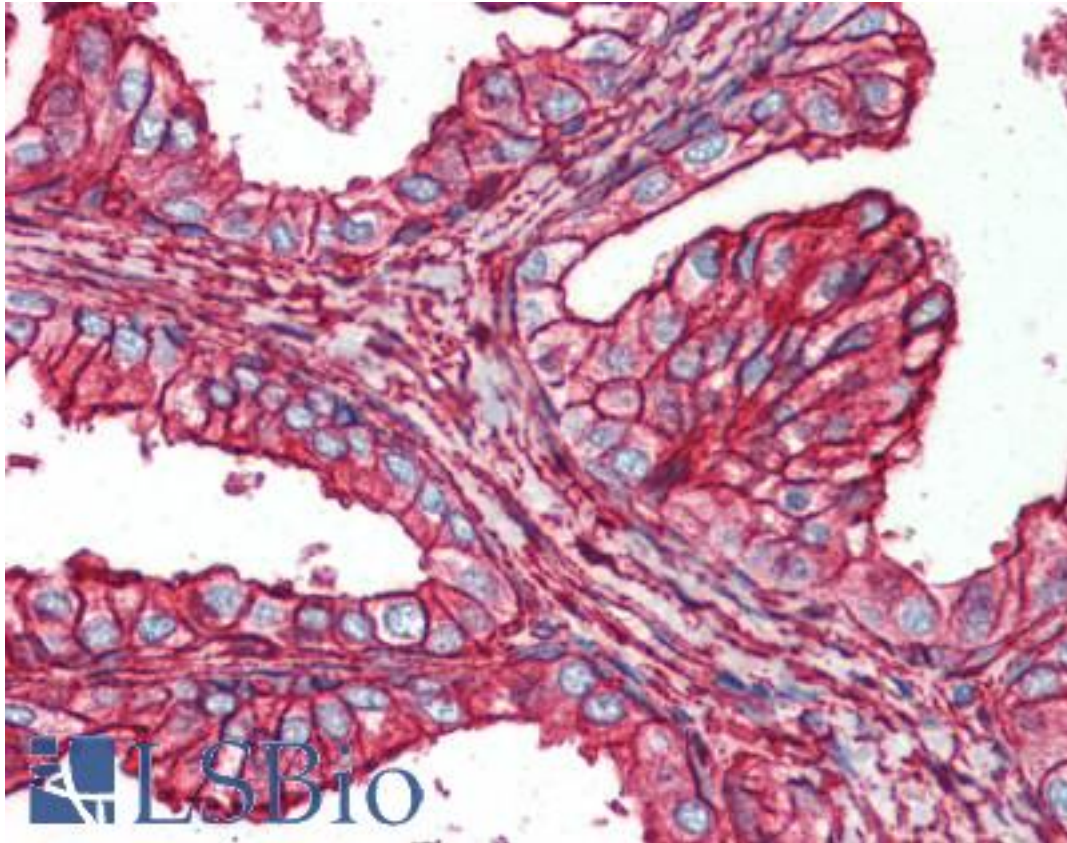


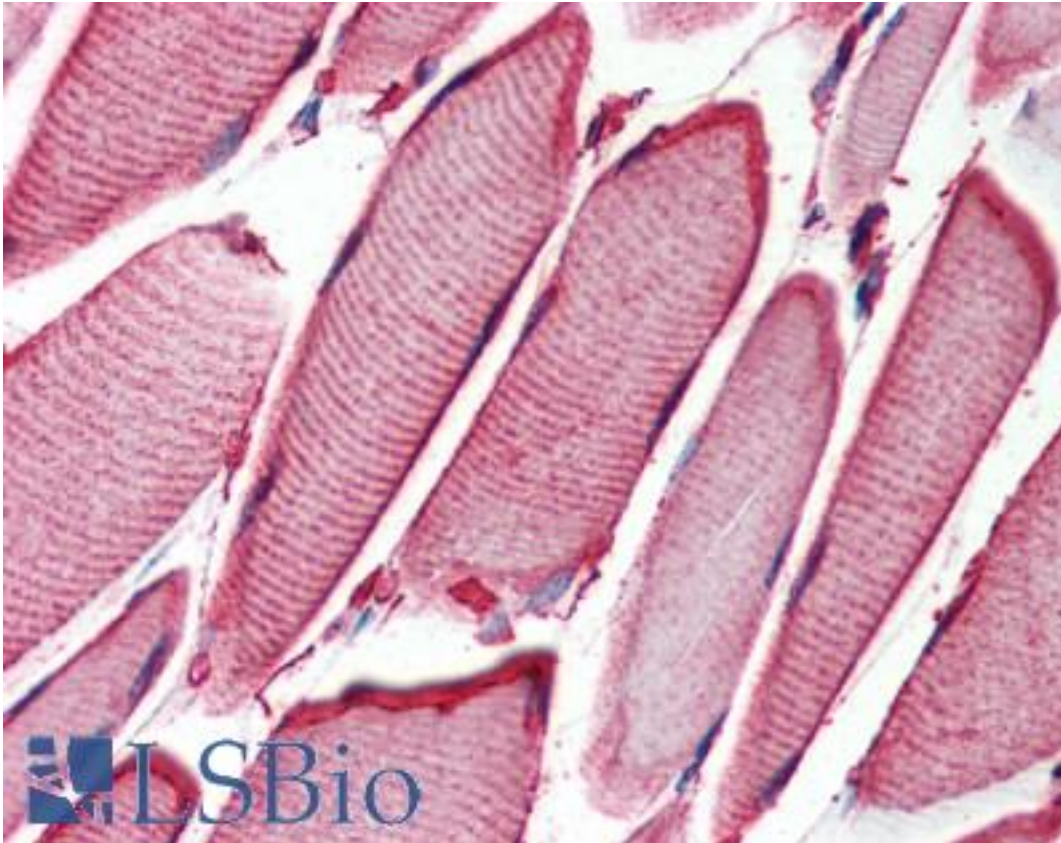
HSPB6 / HSP20 Rabbit anti-Human Polyclonal Antibody - LS-B2899 - LSBio	
CatalogID:	LS-B2899
Validation:	This antibody replaces catalog number LS-C15647. It has been validated for use in the following assays: IHC-P.
Target:	heat shock protein, alpha-crystallin-related, B6 (HSPB6)
Synonyms:	HSPB6 Antibody, Heat shock protein beta-6 Antibody, Hsp20 Antibody
Host	HSPB6 antibody was produced in Rabbit
Clonality:	Polyclonal
Isotype:	IgG
Immunogen Species:	HSPB6 / HSP20 antibody was raised against Human
Immunogen:	HSPB6 / HSP20 antibody was raised against native HSP20 purified from human skeletal muscle.
Specificity:	Recognizes HSP20, Mr ~20kD. Species cross-reactivity: Human, mouse, rabbit, rat and bovine.
Reactivity:	Human, Mouse, Rat, Bovine, Rabbit
Purification:	Immunoaffinity purified
Presentation:	0.1 M PBS, pH 7.0, 0.1% sodium azide, 30 mg/ml BSA, 50% glycerol.
Recommended Storage:	Long term: -20°C; Short term: +4°C. Avoid repeat freeze-thaw cycles.
Usage Summary:	Immunohistochemistry: LS-B2899 was validated for use in immunohistochemistry on a panel of 21 formalin-fixed, paraffin-embedded (FFPE) human tissues after heat induced antigen retrieval in pH 6.0 citrate buffer. After incubation with the primary antibody, slides were incubated with biotinylated secondary antibody, followed by alkaline phosphatase-streptavidin and chromogen. The stained slides were evaluated by a pathologist to confirm staining specificity. The optimal working concentration for LS-B2899 was determined to be 2.5 ug/ml. Western Blot Analysis: 1 ug/ml detected HSP20 in RIPA lysates from rabbit skeletal muscle and mouse heart cytosol. Immunoprecipitation: Reported to immunoprecipitate HSP20 from rat heart extract and lysates of bovine carotid artery smooth muscle.
Uses:	IHC - Paraffin (2.5 µg/ml), Western blot, Immunoprecipitation (Optimal dilution to be determined by the researcher)
Size:	50 µg
Concentration:	1 mg/ml

Immunohistochemistry Image:



Anti-HSPB6 antibody IHC of human prostate. Immunohistochemistry of formalin-fixed, paraffin-embedded tissue after heat-induced antigen retrieval. Antibody LS-B2899 concentration 5 ug/ml.

Immunohistochemistry Image:



Anti-HSPB6 antibody IHC of human skeletal muscle. Immunohistochemistry of formalin-fixed, paraffin-embedded tissue after heat-induced antigen retrieval. Antibody LS-B2899 concentration 5 ug/ml.

Requested From:

Japan

Laboratory Reagent For In Vitro Research Use Only

Not for resale without prior written consent from LifeSpan BioSciences, Inc.

Created on 9/23/2014

© 2014 LifeSpan BioSciences