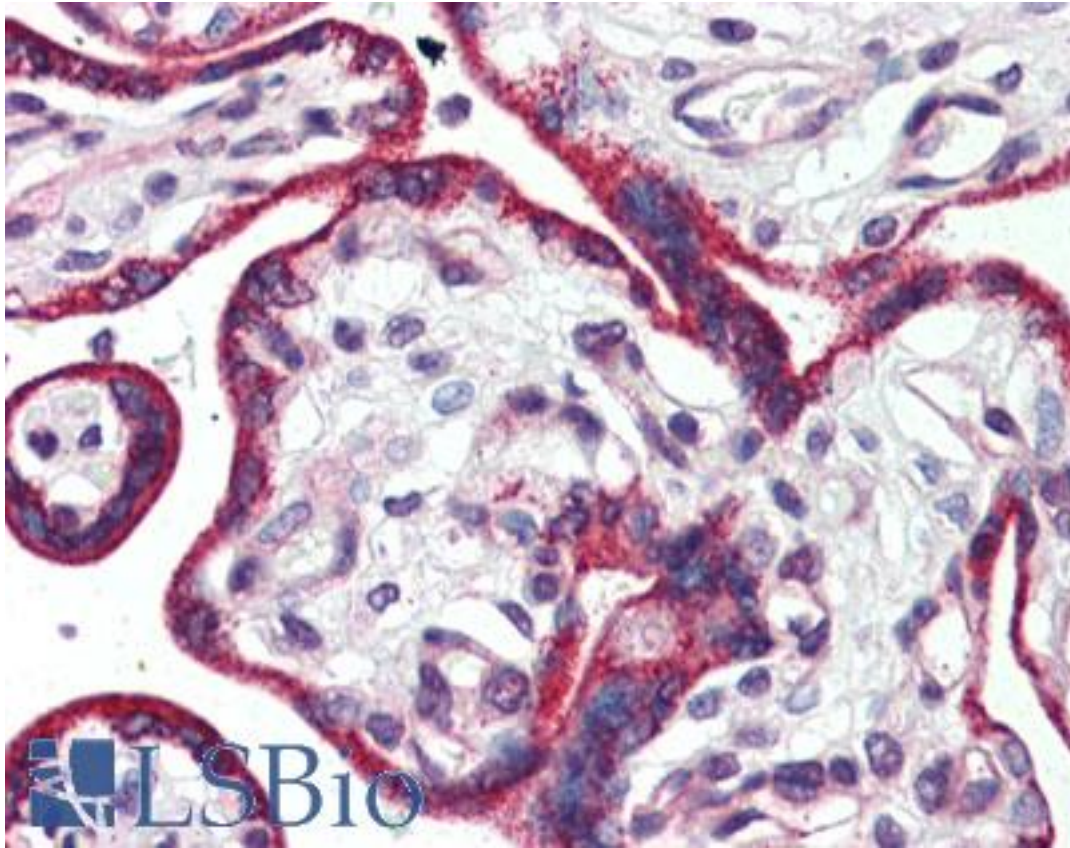


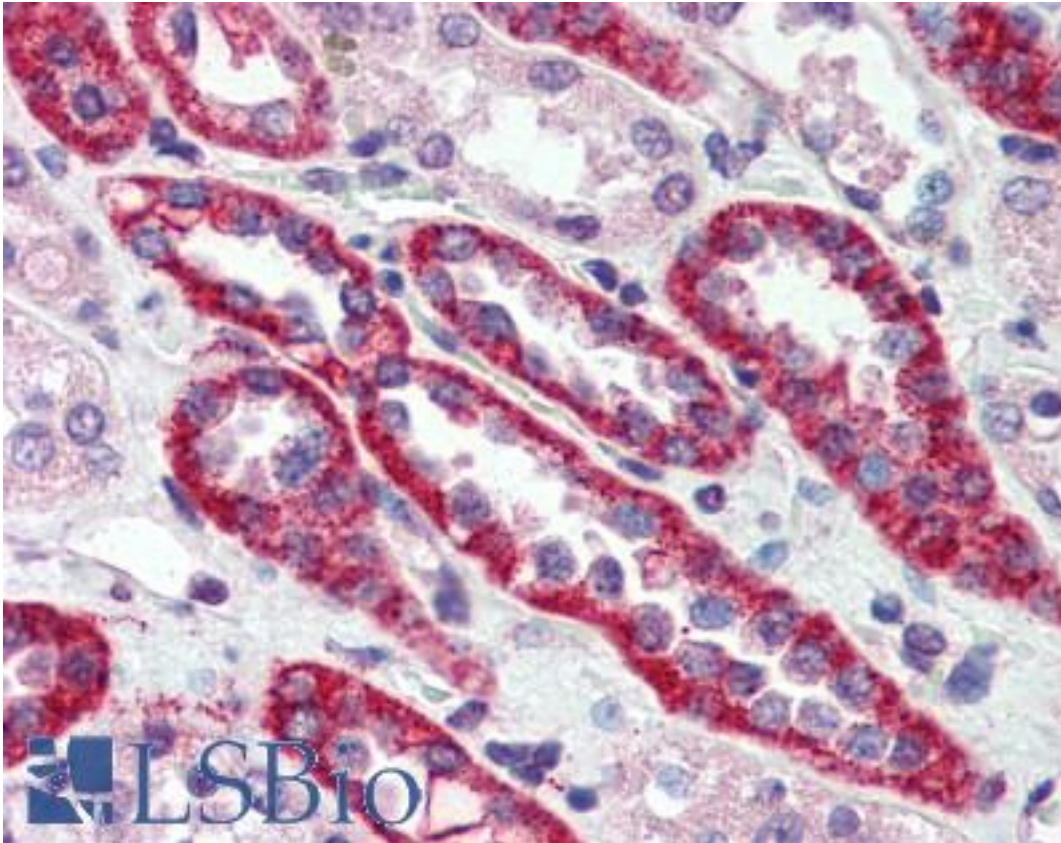
CASR/Calcium Sensing Receptor Rabbit anti-Rat Polyclonal (N-Terminus) Antibody - LS-B2894 - LSBio	
CatalogID:	LS-B2894
Validation:	This antibody replaces catalog number LS-C50280. It has been validated for use in the following assays: IHC-P.
Target:	calcium-sensing receptor (CASR)
Synonyms:	CASR Antibody, Ca sensing receptor Antibody, Ca ²⁺ sensing receptor Antibody, Calcium-sensing receptor Antibody, FIH Antibody, EIG8 Antibody, GPRC2A Antibody, HHC Antibody, HHC1 Antibody, Hypocalciuric hypercalcemia 1 Antibody, PCAR1 Antibody, NSHPT Antibody, CAR Antibody, FHH Antibody
Family / Subfamily:	GPCR / Calcium-sensing
Host	CASR antibody was produced in Rabbit
Clonality:	Polyclonal
Immunogen Species:	CASR/Calcium Sensing Receptor antibody was raised against Rat
Antigen Type:	Synthetic peptide
Immunogen:	CASR/Calcium Sensing Receptor antibody was raised against a synthetic peptide from N-terminal of rat calcium sensing receptor.
Epitope:	N-Terminus
Reactivity:	Rat, Human
Purification:	Immunoaffinity purified
Presentation:	10 mM PBS, pH 7.4, BSA, sodium azide.
Recommended Storage:	Long term: -20°C; Short term: +4°C. Avoid repeat freeze-thaw cycles.
Usage Summary:	Immunohistochemistry: LS-B2894 was validated for use in immunohistochemistry on a panel of 21 formalin-fixed, paraffin-embedded (FFPE) human tissues after heat induced antigen retrieval in pH 6.0 citrate buffer. After incubation with the primary antibody, slides were incubated with biotinylated secondary antibody, followed by alkaline phosphatase-streptavidin and chromogen. The stained slides were evaluated by a pathologist to confirm staining specificity. The optimal working concentration for LS-B2894 was determined to be 15 ug/ml.
Uses:	IHC - Paraffin (15 µg/ml), Western blot (1 - 2 µg/ml) (Optimal dilution to be determined by the researcher)
Size:	250 µl

Immunohistochemistry Image:



Anti-Calcium Sensing Receptor antibody IHC of human placenta. Immunohistochemistry of formalin-fixed, paraffin-embedded tissue after heat-induced antigen retrieval. Antibody LS-B2894 concentration 15 ug/ml.

Immunohistochemistry Image:



Anti-Calcium Sensing Receptor antibody IHC of human kidney. Immunohistochemistry of formalin-fixed, paraffin-embedded tissue after heat-induced antigen retrieval. Antibody LS-B2894 concentration 15 ug/ml.

Requested From:

Japan

Laboratory Reagent For In Vitro Research Use Only

Not for resale without prior written consent from LifeSpan BioSciences, Inc.

Created on 9/23/2014

© 2014 LifeSpan BioSciences