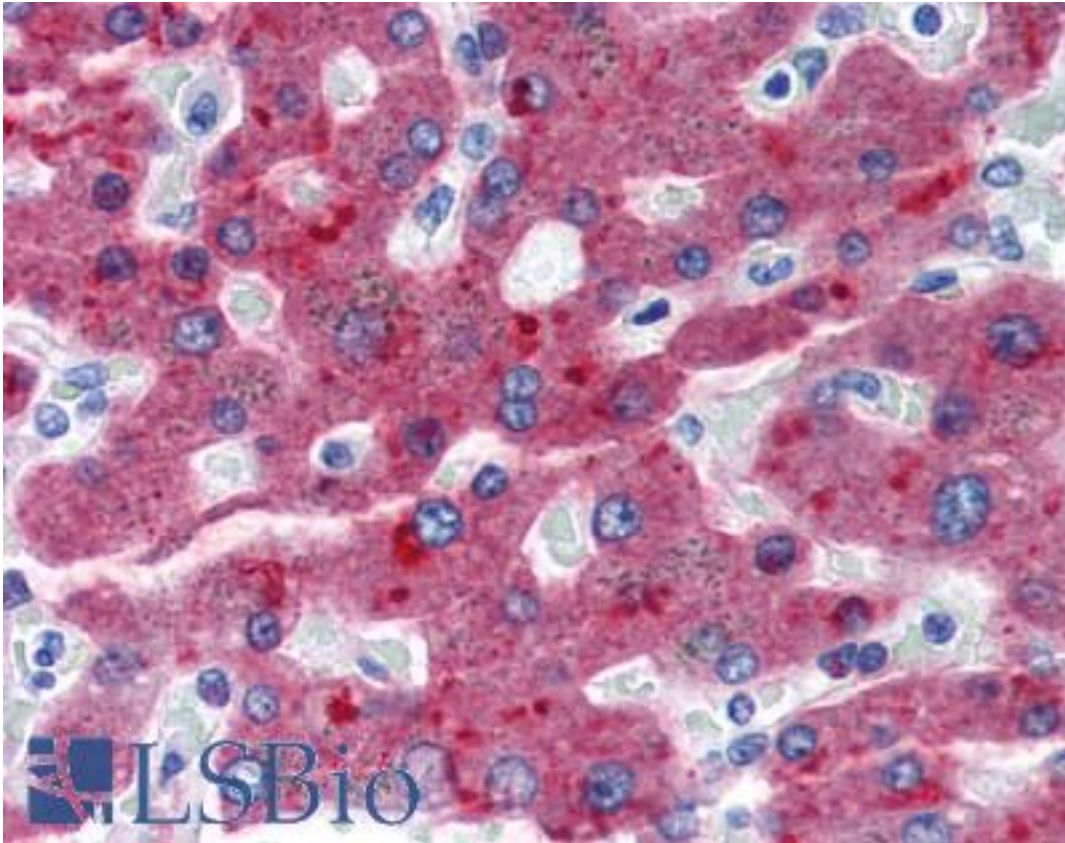


CFH / Complement Factor H Mouse anti-Human Monoclonal (OX-24) Antibody - LS-B2889 - LSBio	
CatalogID:	LS-B2889
Validation:	This antibody replaces catalog number LS-C34560. It has been validated for use in the following assays: IHC-P.
Target:	complement factor H (CFH)
Synonyms:	CFH Antibody, Adrenomedullin binding protein Antibody, AHUS1 Antibody, AMBP1 Antibody, ARMS1 Antibody, ARMD4 Antibody, Beta-1-H-globulin Antibody, Factor H Antibody, Factor H-like 1 Antibody, HF Antibody, HF2 Antibody, H factor 1 Antibody, H factor 2 (complement) Antibody, HUS Antibody, HF1 Antibody, Beta-1H Antibody, CFHL3 Antibody, Complement factor H Antibody, H factor 1 (complement) Antibody
Host	CFH antibody was produced in Mouse
Clonality:	Monoclonal
Isotype:	IgG1
Clone Name:	OX-24
Immunogen Species:	CFH / Complement Factor H antibody was raised against Human
Antigen Type:	Purified protein
Immunogen:	CFH / Complement Factor H antibody was raised against human complement factor H.
Specificity:	Purified anti-human factor H (beta 1H) (139 kD) monoclonal antibody clone OX-24 inhibits the binding of factor H to surface bound C3. This antibody recognizes the human serum complement protein factor H and a 43-49kD truncated form of factor H present at.
Reactivity:	Human
Purification:	Protein G purified
Presentation:	PBS, 0.02% sodium azide. Sourced in Ascites.
Recommended Storage:	Store at 4°C for short term applications. For long term storage, aliquot and store at -20°C.
Usage Summary:	Immunohistochemistry: LS-B2889 was validated for use in immunohistochemistry on a panel of 21 formalin-fixed, paraffin-embedded (FFPE) human tissues after heat induced antigen retrieval in pH 6.0 citrate buffer. After incubation with the primary antibody, slides were incubated with biotinylated secondary antibody, followed by alkaline phosphatase-streptavidin and chromogen. The stained slides were evaluated by a pathologist to confirm staining specificity. The optimal working concentration for LS-B2889 was determined to be 20 µg/ml.
Uses:	IHC - Paraffin (20 µg/ml), Western blot, Immunoprecipitation, Flow Cytometry, ELISA (Optimal dilution to be determined by the researcher)
Size:	50 µg
Concentration:	1 mg/ml

Immunohistochemistry Image:



Anti-Factor H antibody IHC of human liver. Immunohistochemistry of formalin-fixed, paraffin-embedded tissue after heat-induced antigen retrieval. Antibody LS-B2889 concentration 20 ug/ml.

Requested From:

Japan

Laboratory Reagent For In Vitro Research Use Only

Not for resale without prior written consent from LifeSpan BioSciences, Inc.

Created on 9/23/2014

© 2014 LifeSpan BioSciences