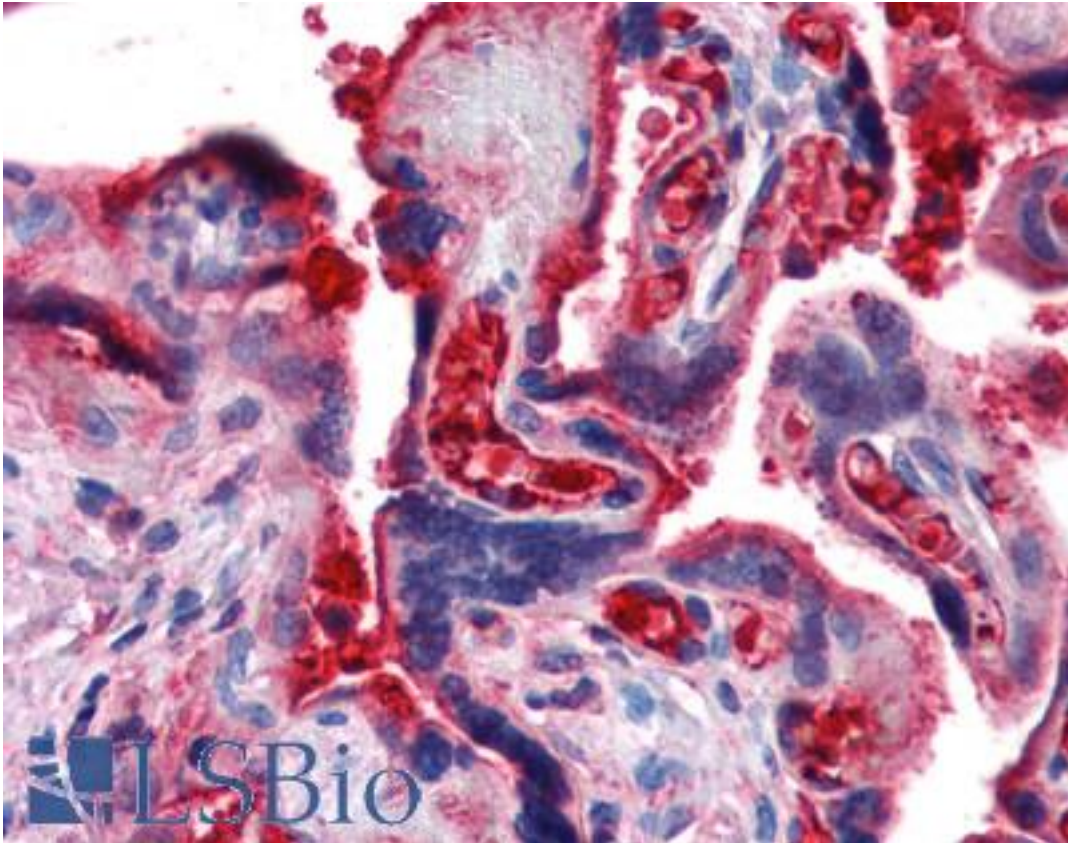


Complement C4B Chicken anti-Human Polyclonal Antibody - LS-B2888 - LSBio

CatalogID:	LS-B2888
Validation:	This antibody replaces catalog number LS-C34545. It has been validated for use in the following assays: IHC-P.
Target:	complement component 4B (Chido blood group) (C4B)
Synonyms:	C4B Antibody, C4B12 Antibody, C4BD Antibody, C4B1 Antibody, C4B3 Antibody, Complement C4B Antibody, CH Antibody, Chido form of C4 Antibody, CPAMD3 Antibody, Complement C4-B Antibody, CO4 Antibody, Basic complement C4 Antibody, C4B2 Antibody, C4B5 Antibody, C4F Antibody, Complement C4B1a Antibody, Complement component 4B Antibody
Host	C4B antibody was produced in Chicken
Clonality:	Polyclonal
Isotype:	IgY
Immunogen Species:	Complement C4B antibody was raised against Human
Immunogen:	Complement C4B antibody was raised against purified human complement C4b.
Specificity:	Anti-Human Complement Component C4b polyclonal antibody reacts with human C4b. C4 is a 210 KDa trimeric glycoprotein containing three polypeptide chains alpha, beta, and gamma with respective molecular weights of 93KDa, 75KDa and 33 KDa. C4 breaks down in.
Reactivity:	Human
Purification:	Purified
Presentation:	PBS, 0.02% sodium azide.
Recommended Storage:	Store at 4°C for short term applications. For long term storage, aliquot and store at -20°C.
Usage Summary:	Immunohistochemistry: LS-B2888 was validated for use in immunohistochemistry on a panel of 21 formalin-fixed, paraffin-embedded (FFPE) human tissues after heat induced antigen retrieval in pH 6.0 citrate buffer. After incubation with the primary antibody, slides were incubated with biotinylated secondary antibody, followed by alkaline phosphatase-streptavidin and chromogen. The stained slides were evaluated by a pathologist to confirm staining specificity. The optimal working concentration for LS-B2888 was determined to be 20 ug/ml.
Uses:	IHC - Paraffin (20 µg/ml), Western blot, Flow Cytometry (0.1 µg/10E6 cells), ELISA (Optimal dilution to be determined by the researcher)
Size:	50 µg
Concentration:	1 mg/ml

Immunohistochemistry Image:



Anti-C4B antibody IHC of human placenta. Immunohistochemistry of formalin-fixed, paraffin-embedded tissue after heat-induced antigen retrieval. Antibody LS-B2888 concentration 20 ug/ml.

Requested From:

Japan

Laboratory Reagent For In Vitro Research Use Only

Not for resale without prior written consent from LifeSpan BioSciences, Inc.

Created on 9/23/2014

© 2014 LifeSpan BioSciences