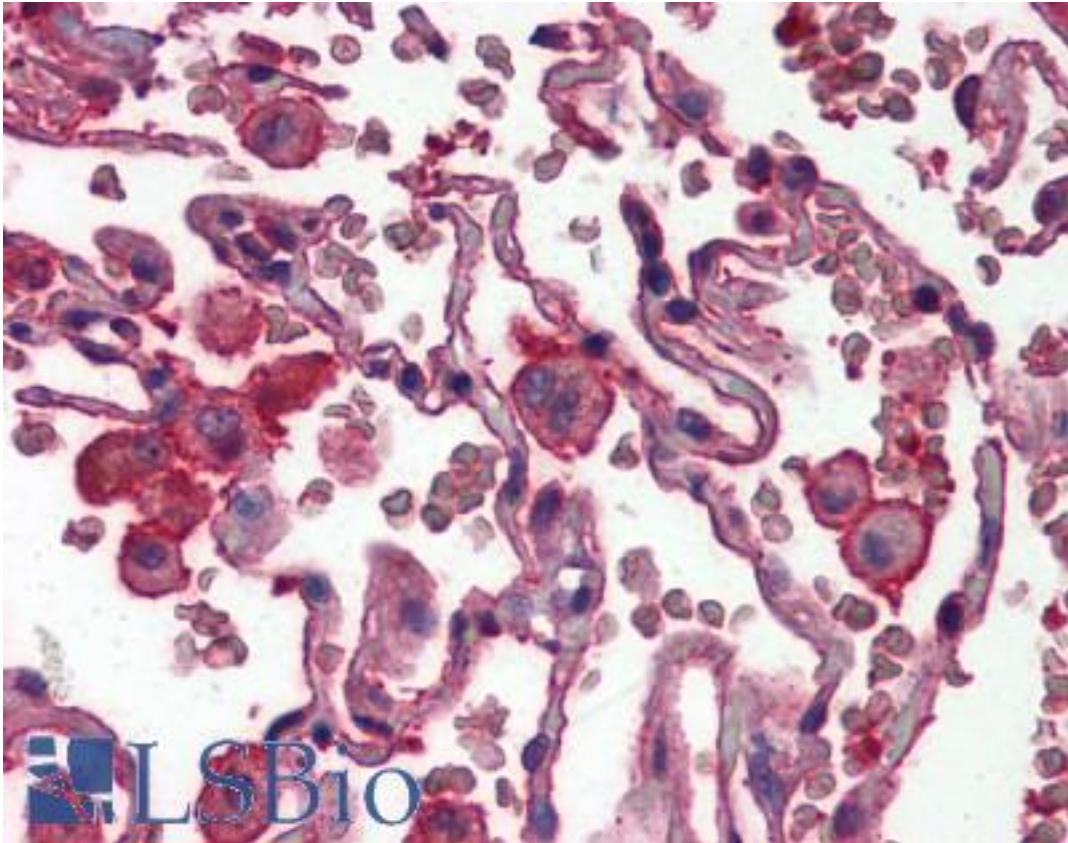


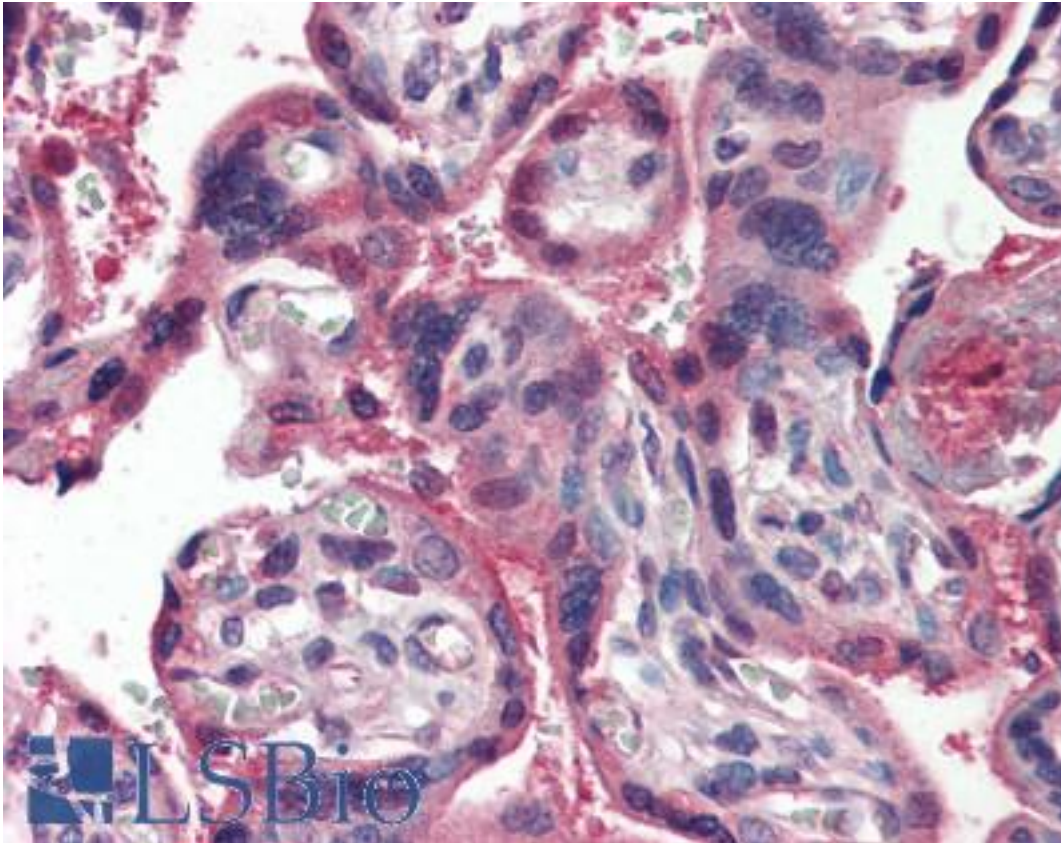
RETN / Resistin Rabbit anti-Mouse Polyclonal Antibody - LS-B2879 - LSBio	
<b>CatalogID:</b>	LS-B2879
<b>Validation:</b>	This antibody replaces catalog number LS-C48971. It has been validated for use in the following assays: IHC-P.
<b>Target:</b>	resistin (RETN)
<b>Synonyms:</b>	RETN Antibody, ADSF Antibody, Fizz3 Antibody, Resistin Antibody, RETN1 Antibody, Xcp1 Antibody, RSTN Antibody, Found in inflammatory zone 3 Antibody, HXCP1 Antibody, Resistin delta2 Antibody
<b>Host</b>	RETN antibody was produced in Rabbit
<b>Clonality:</b>	Polyclonal
<b>Immunogen Species:</b>	RETN / Resistin antibody was raised against Mouse
<b>Antigen Type:</b>	Recombinant protein
<b>Immunogen:</b>	RETN / Resistin antibody was raised against recombinant mouse resistin.
<b>Reactivity:</b>	Mouse, Human
<b>Purification:</b>	Affinity purified
<b>Presentation:</b>	PBS, pH 7.2, 30% glycerol, 0.5% BSA, 0.01% Thimerosal.
<b>Recommended Storage:</b>	+4°C or -20°C, Avoid repeated freezing and thawing.
<b>Usage Summary:</b>	Immunohistochemistry: LS-B2879 was validated for use in immunohistochemistry on a panel of 21 formalin-fixed, paraffin-embedded (FFPE) human tissues after heat induced antigen retrieval in pH 6.0 citrate buffer. After incubation with the primary antibody, slides were incubated with biotinylated secondary antibody, followed by alkaline phosphatase-streptavidin and chromogen. The stained slides were evaluated by a pathologist to confirm staining specificity. The optimal working concentration for LS-B2879 was determined to be 5 ug/ml.
<b>Uses:</b>	IHC - Paraffin (5 µg/ml), ICC (10 - 20 µg/ml), Western blot (0.5 - 4 µg/ml) (Optimal dilution to be determined by the researcher)
<b>Size:</b>	50 µg
<b>Concentration:</b>	0.5 mg/ml

**Immunohistochemistry Image:**



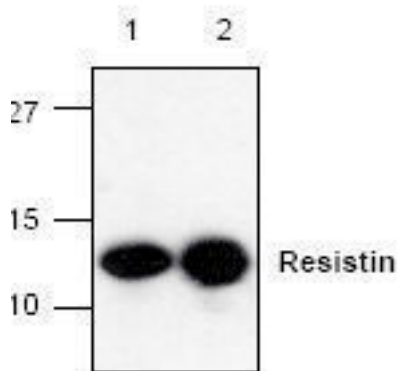
Anti-RETN / Resistin antibody IHC of human lung. Immunohistochemistry of formalin-fixed, paraffin-embedded tissue after heat-induced antigen retrieval. Antibody LS-B2879 concentration 5 ug/ml.

**Immunohistochemistry Image:**



Anti-RETN / Resistin antibody IHC of human placenta. Immunohistochemistry of formalin-fixed, paraffin-embedded tissue after heat-induced antigen retrieval. Antibody LS-B2879 concentration 5 ug/ml.

**Western Blot Image:**



Western blot of Resistin antibody LS-B2879.

**Requested From:**

Japan

Laboratory Reagent For In Vitro Research Use Only

Not for resale without prior written consent from LifeSpan BioSciences, Inc.

Created on 9/23/2014

© 2014 LifeSpan BioSciences