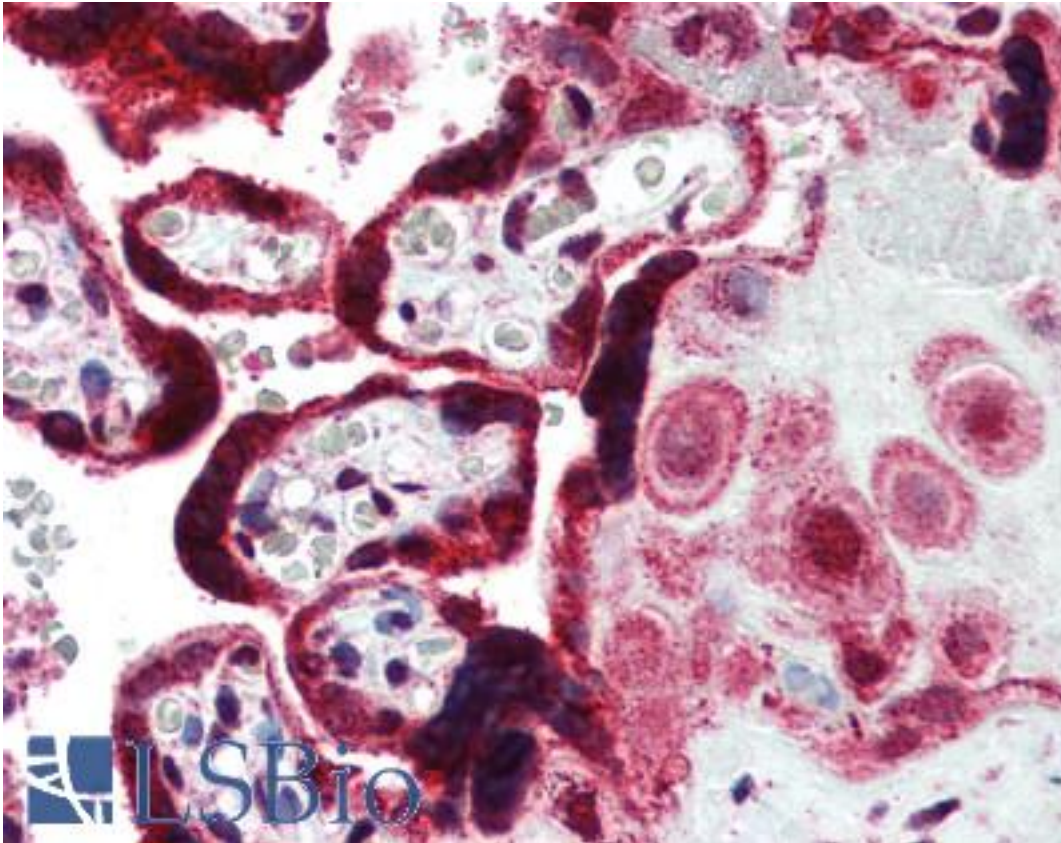


FERMT1 / Kindlin Rabbit anti-Human Polyclonal (aa643-660) Antibody - LS-B2876 - LSBio	
<b>CatalogID:</b>	LS-B2876
<b>Validation:</b>	This antibody replaces catalog number LS-C18416. It has been validated for use in the following assays: IHC-P.
<b>Target:</b>	fermitin family member 1 (FERMT1)
<b>Synonyms:</b>	FERMT1 Antibody, C20orf42 Antibody, DTGCU2 Antibody, Fermitin family homolog 1 Antibody, Kindlin syndrome protein Antibody, KIND1 Antibody, Kindlin 1 Antibody, UNC112A Antibody, URP1 Antibody, UNC112 related protein 1 Antibody, Fermitin family member 1 Antibody, Kindlerin Antibody, Kindlin Antibody, Kindlin-1 Antibody, Unc-112-related protein 1 Antibody
<b>Host</b>	FERMT1 antibody was produced in Rabbit
<b>Clonality:</b>	Polyclonal
<b>Isotype:</b>	IgG
<b>Immunogen Species:</b>	FERMT1 / Kindlin antibody was raised against Human
<b>Immunogen:</b>	FERMT1 / Kindlin antibody was raised against residues 643-660 (VHEYIGGYIFLSTRSKDQ) of the 77kD human URP1 protein. Percent identity by BLAST analysis: Human, Gorilla, Orangutan, Monkey, Marmoset, Mouse, Rat, Hamster, Elephant, Panda, Bovine, Dog, Horse, Rabbit, Pig, Opossum, Xenopus, Zebrafish (100%); Platypus, Lizard, Stickleback, Pufferfish (94%); Gibbon, Bat, Chicken, Beetle, Tick (89%); Turkey, Nematode (83%).
<b>Specificity:</b>	Reacts with residues 643-660 (VHEYIGGYIFLSTRSKDQ) of the 77kD human URP1 protein. Sequence is 100% conserved between almost all species (mouse, rat, canine, bovine, chimpanzee, Xenopus).
<b>Epitope:</b>	aa643-660
<b>Reactivity:</b>	Human, Gorilla, Orangutan, Monkey, Mouse, Rat, Bovine, Dog, Hamster, Horse, Pig, Rabbit, Xenopus, Zebrafish
<b>Purification:</b>	Immunoaffinity purified
<b>Presentation:</b>	PBS, pH 7.2, 0.02% sodium azide.
<b>Recommended Storage:</b>	Long term: -20°C; Short term: +4°C; Avoid freeze-thaw cycles.
<b>Usage Summary:</b>	Immunohistochemistry: LS-B2876 was validated for use in immunohistochemistry on a panel of 21 formalin-fixed, paraffin-embedded (FFPE) human tissues after heat induced antigen retrieval in pH 6.0 citrate buffer. After incubation with the primary antibody, slides were incubated with biotinylated secondary antibody, followed by alkaline phosphatase-streptavidin and chromogen. The stained slides were evaluated by a pathologist to confirm staining specificity. The optimal working concentration for LS-B2876 was determined to be 5 ug/ml.
<b>Uses:</b>	IHC - Paraffin (5 µg/ml), Western blot (1:1000) (Optimal dilution to be determined by the researcher)
<b>Size:</b>	50 µg
<b>Concentration:</b>	1 mg/ml

**Immunohistochemistry Image:**



Anti-FERMT1 antibody IHC of human placenta. Immunohistochemistry of formalin-fixed, paraffin-embedded tissue after heat-induced antigen retrieval. Antibody LS-B2876 concentration 5 ug/ml.

**Requested From:**

Japan

Laboratory Reagent For In Vitro Research Use Only

Not for resale without prior written consent from LifeSpan BioSciences, Inc.

Created on 9/23/2014

© 2014 LifeSpan BioSciences