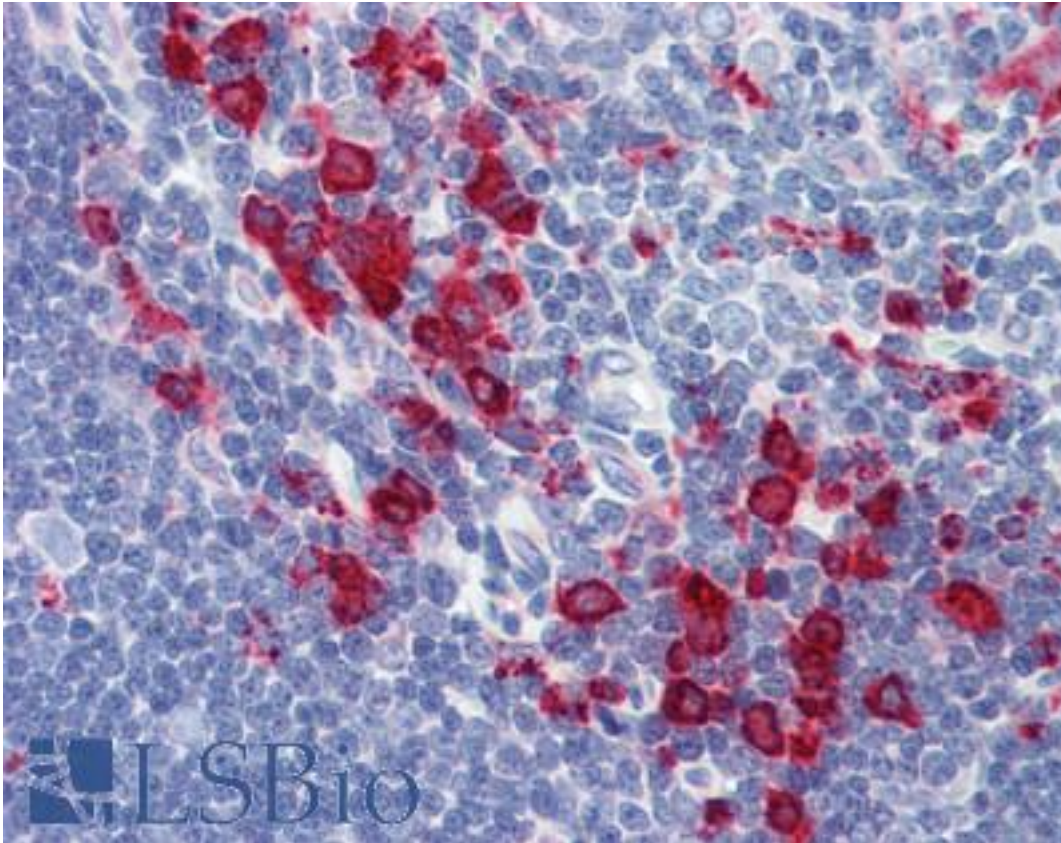


CD68 Mouse anti-Human Monoclonal (KP1) Antibody - LS-B2862 - LSBio

| | |
|-----------------------------|--|
| CatalogID: | LS-B2862 |
| Validation: | This antibody replaces catalog number LS-C5466. It has been validated for use in the following assays: IHC-P. |
| Target: | CD68 molecule |
| Synonyms: | CD68 Antibody, CD68 antigen Antibody, gp110 Antibody, SCARD1 Antibody, CD68 molecule Antibody, LAMP4 Antibody, Macrophage antigen CD68 Antibody, Macrosialin Antibody |
| Host | CD68 antibody was produced in Mouse |
| Clonality: | Monoclonal |
| Isotype: | IgG1,k |
| Clone Name: | KP1 |
| Immunogen Species: | CD68 antibody was raised against Human |
| Antigen Type: | Cells |
| Immunogen: | CD68 antibody was raised against subcellular fraction of human alveolar macrophages. Cellular Localization: Cytoplasmic. |
| Specificity: | Recognizes the human glycoprotein of 110kD, which is identified as CD68. Species cross-reactivity: Monkey, feline, rat. Does not react with porcine, canine, chicken. |
| Reactivity: | Human, Monkey, Rat, Cat |
| Purification: | Protein G purified |
| Presentation: | 10 mM PBS, pH 7.4, 0.2% BSA, 0.09% sodium azide. |
| Recommended Storage: | Long term: -20°C; Short term: +4°C. Avoid repeat freeze-thaw cycles. |
| Usage Summary: | Immunohistochemistry: LS-B2862 was validated for use in immunohistochemistry on a panel of 21 formalin-fixed, paraffin-embedded (FFPE) human tissues after heat induced antigen retrieval in pH 6.0 citrate buffer. After incubation with the primary antibody, slides were incubated with biotinylated secondary antibody, followed by alkaline phosphatase-streptavidin and chromogen. The stained slides were evaluated by a pathologist to confirm staining specificity. The optimal working concentration for LS-B2862 was determined to be 1:50. Positive control: Tonsil, lymph node or spleen. |
| Uses: | IHC - Paraffin (1:50) (Optimal dilution to be determined by the researcher) |
| Size: | 125 µl |
| Concentration: | 0.2 mg/ml |

Immunohistochemistry Image:



Anti-CD68 antibody IHC of human thymus. Immunohistochemistry of formalin-fixed, paraffin-embedded tissue after heat-induced antigen retrieval. Antibody LS-B2862 dilution 1:50.

Requested From:

Japan

Laboratory Reagent For In Vitro Research Use Only

Not for resale without prior written consent from LifeSpan BioSciences, Inc.

Created on 9/23/2014

© 2014 LifeSpan BioSciences