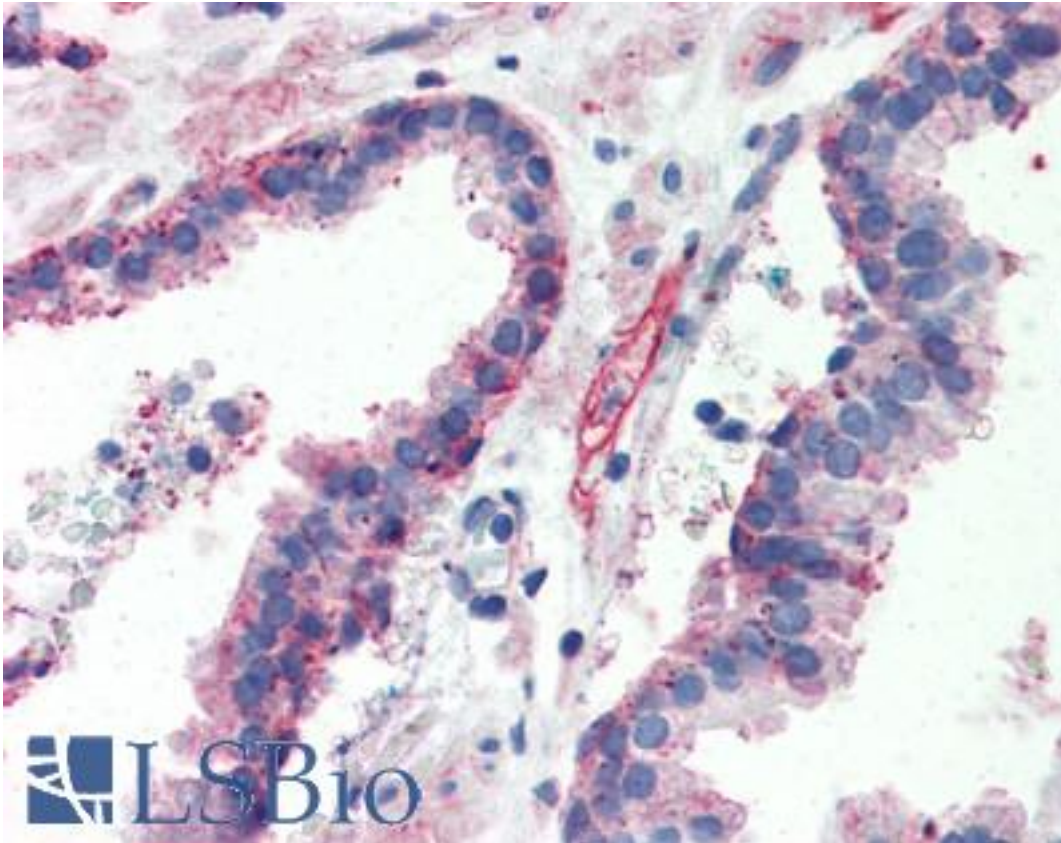


ITGB1 / Integrin Beta 1 / CD29 Mouse anti-Human Monoclonal (HUTS-4) Antibody - LS-B2861 - LSBio	
<b>CatalogID:</b>	LS-B2861
<b>Validation:</b>	This antibody replaces catalog number LS-C36928. It has been validated for use in the following assays: IHC-P.
<b>Target:</b>	integrin, beta 1 (fibronectin receptor, beta polypeptide, antigen CD29 includes MDF2, MSK12) (ITGB1)
<b>Synonyms:</b>	ITGB1 Antibody, CD29 Antibody, CD29 antigen Antibody, Integrin beta-1 Antibody, MDF2 Antibody, MSK12 Antibody, Integrin VLA-4 beta subunit Antibody, VLA-BETA Antibody, VLAB Antibody, Beta 1 integrin Antibody, FNRB Antibody, GPIIA Antibody, Integrin Beta 1 Antibody, VLA-4 subunit beta Antibody
<b>Family / Subfamily:</b>	Integrin / not assigned-Integrin
<b>Host</b>	ITGB1 antibody was produced in Mouse
<b>Clonality:</b>	Monoclonal
<b>Isotype:</b>	IgG2b
<b>Clone Name:</b>	HUTS-4
<b>Immunogen Species:</b>	ITGB1 / Integrin Beta 1 / CD29 antibody was raised against Human
<b>Antigen Type:</b>	Cells
<b>Immunogen:</b>	ITGB1 / Integrin Beta 1 / CD29 antibody was raised against human b1 integrins purified from Triton X-100 lysates of human lung, liver, and skeletal muscle tissues. Specifically selected due to its increased reactivity with T-lymphoblasts upon Mn2+ stimulation.
<b>Specificity:</b>	Specific for active conformation of human b1 integrins. Does not augment the affinity of beta 1 for ligands. Species cross-reactivity: rat.
<b>Reactivity:</b>	Human, Rat
<b>Purification:</b>	Purified
<b>Presentation:</b>	PBS, pH 7.1. No preservatives.
<b>Recommended Storage:</b>	Long term: -20°C; Short term: +4°C. Avoid repeat freeze-thaw cycles.
<b>Usage Summary:</b>	Immunohistochemistry: LS-B2861 was validated for use in immunohistochemistry on a panel of 21 formalin-fixed, paraffin-embedded (FFPE) human tissues after heat induced antigen retrieval in pH 6.0 citrate buffer. After incubation with the primary antibody, slides were incubated with biotinylated secondary antibody, followed by alkaline phosphatase-streptavidin and chromogen. The stained slides were evaluated by a pathologist to confirm staining specificity. The optimal working concentration for LS-B2861 was determined to be 10 ug/ml. FACS: 2.5 ug/5x10 <sup>5</sup> cells.
<b>Uses:</b>	IHC - Paraffin (10 µg/ml), IHC - 4% paraformaldehyde, Western blot, Flow Cytometry, ELISA (Optimal dilution to be determined by the researcher)
<b>Size:</b>	50 µg
<b>Concentration:</b>	1 mg/ml

**Immunohistochemistry Image:**



Anti-Integrin Beta 1 antibody IHC of human prostate. Immunohistochemistry of formalin-fixed, paraffin-embedded tissue after heat-induced antigen retrieval. Antibody LS-B2861 concentration 10 ug/ml.

**Requested From:**

Japan

Laboratory Reagent For In Vitro Research Use Only

Not for resale without prior written consent from LifeSpan BioSciences, Inc.

Created on 9/23/2014

© 2014 LifeSpan BioSciences