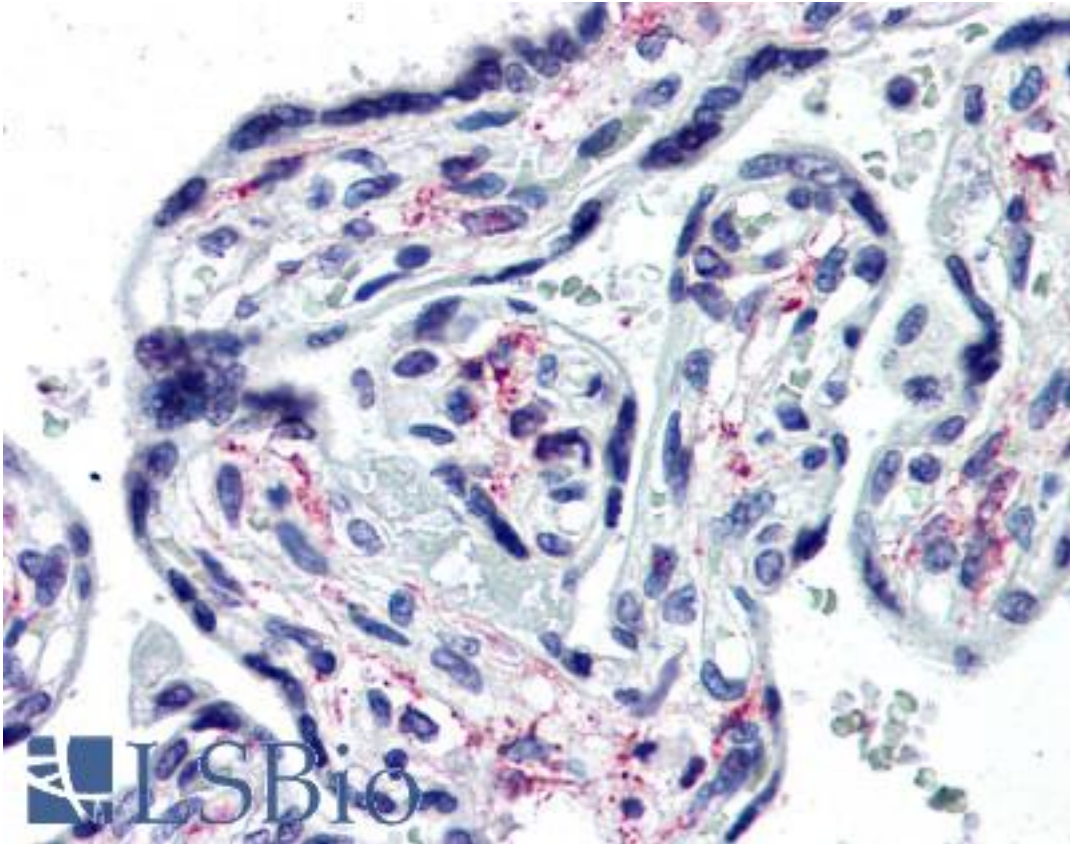


IL1RA / IL1R1 Mouse anti-Human Monoclonal (Extracellular Domain) (40101) Antibody - LS-B2859 - LSBio	
CatalogID:	LS-B2859
Validation:	This antibody replaces catalog number LS-C83460. It has been validated for use in the following assays: IHC-P.
Target:	interleukin 1 receptor, type I (IL1R1)
Synonyms:	IL1R1 Antibody, Antigen CD121a Antibody, D2S1473 Antibody, IL-1R-1 Antibody, IL-1R-alpha Antibody, IL-1RT-1 Antibody, IL-1RT1 Antibody, IL1R Antibody, IL1RA Antibody, IL1RT1 Antibody, Interleukin receptor 1 Antibody, Interleukin-1 receptor alpha Antibody, Interleukin-1 receptor type 1 Antibody, CD121A Antibody, CD121a antigen Antibody, Interleukin 1 receptor, type I Antibody, Interleukin-1 receptor type I Antibody, Interleukin-1 type i receptor Antibody, p80 Antibody
Family / Subfamily:	Interleukin
Host	IL1R1 antibody was produced in Mouse
Clonality:	Monoclonal
Isotype:	IgG2b
Clone Name:	40101
Immunogen Species:	IL1RA / IL1R1 antibody was raised against Human
Antigen Type:	Protein
Immunogen:	IL1RA / IL1R1 antibody was raised against the extracellular domain of the type I human IL-1 receptor.
Specificity:	These antibodies react with cell surface and soluble human IL-1 receptor; Specific epitopes are unknown, but they do partially inhibit (30-50%) binding of one another to IL-1 receptor. They do not block binding of IL-1 to receptor, and they do not cross-react with receptors for human IL-2 or IL-4.
Epitope:	Extracellular Domain
Reactivity:	Human
Purification:	Protein G purified
Presentation:	PBS, pH 7.4. Sourced in Ascites.
Recommended Storage:	+4°C or -20°C, Avoid repeated freezing and thawing.
Usage Summary:	Immunohistochemistry: LS-B2859 was validated for use in immunohistochemistry on a panel of 21 formalin-fixed, paraffin-embedded (FFPE) human tissues after heat induced antigen retrieval in pH 6.0 citrate buffer. After incubation with the primary antibody, slides were incubated with biotinylated secondary antibody, followed by alkaline phosphatase-streptavidin and chromogen. The stained slides were evaluated by a pathologist to confirm staining specificity. The optimal working concentration for LS-B2859 was determined to be 10 ug/ml. ELISA: Can be used as capture reagents or second antibody at a concentration of 5 ug/ml. RIA: Concentrations of 20-30 ng/ml of these antibodies will bind radiolabeled IL-1 receptor in a radioimmunoassay format. Immunocytochemistry: IL-1 receptor can be detected on cultured cells using antibody concentrations of 10-100 ug/ml.
Uses:	IHC - Paraffin (10 µg/ml), ELISA, Radioimmunoassay (Optimal dilution to be determined by the researcher)

Uses Not Recommended:	Western blot
Size:	50 µg
Concentration:	1 mg/ml

Immunohistochemistry Image:



Anti-IL1R1 antibody IHC of human placenta. Immunohistochemistry of formalin-fixed, paraffin-embedded tissue after heat-induced antigen retrieval. Antibody LS-B2859 concentration 10 ug/ml.

Requested From:	Japan
------------------------	-------

Laboratory Reagent For In Vitro Research Use Only
Not for resale without prior written consent from LifeSpan BioSciences, Inc.
Created on 9/23/2014
© 2014 LifeSpan BioSciences