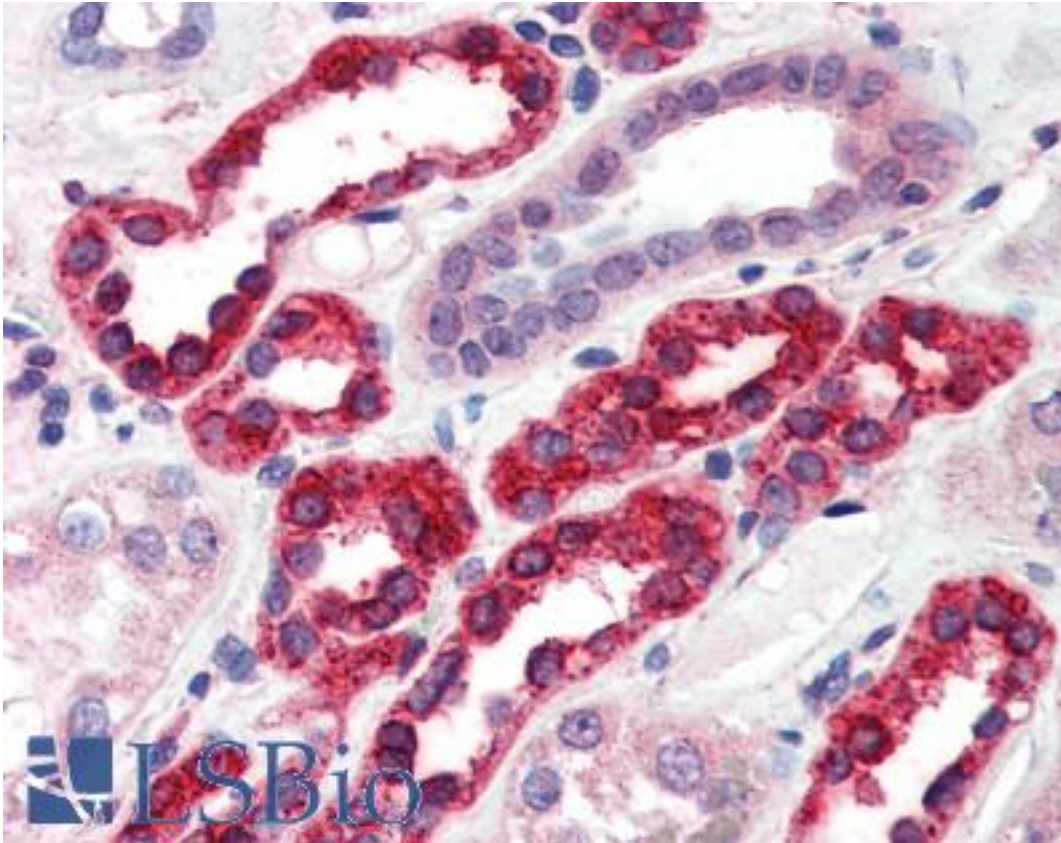


GGA3 Goat anti-Human Polyclonal (C-Terminus) Antibody - LS-B2853 - LSBio	
<b>CatalogID:</b>	LS-B2853
<b>Validation:</b>	This antibody replaces catalog number LS-C54910. It has been validated for use in the following assays: IHC-P.
<b>Target:</b>	golgi-associated, gamma adaptin ear containing, ARF binding protein 3 (GGA3)
<b>Synonyms:</b>	GGA3 Antibody, KIAA0154 Antibody
<b>Host</b>	GGA3 antibody was produced in Goat
<b>Clonality:</b>	Polyclonal
<b>Immunogen Species:</b>	GGA3 antibody was raised against Human
<b>Antigen Type:</b>	Synthetic peptide
<b>Immunogen:</b>	GGA3 antibody was raised against synthetic peptide C-EQLSTEVGEVDQ from the C-terminus of human GGA3 (NP_619525.1; NP_054720.1). Percent identity by BLAST analysis: Human, Gorilla, Orangutan, Monkey, Marmoset, Elephant, Panda, Bat, Horse, Rabbit, Pig (100%); Gibbon, Mouse, Rat, Hamster, Dog, Opossum (92%); Turkey, Chicken, Xenopus (83%).
<b>Specificity:</b>	Human GGA3. This antibody is expected to recognise both reported isoforms (NP_619525 and NP_054720)
<b>Epitope:</b>	C-Terminus
<b>Reactivity:</b>	Human, Gorilla, Orangutan, Monkey, Bat, Horse, Pig, Rabbit
<b>Predicted Reactivity:</b>	Gibbon, Mouse, Rat, Dog, Hamster
<b>Purification:</b>	Immunoaffinity purified
<b>Presentation:</b>	Tris-buffered saline, pH 7.3, 0.5% BSA, 0.02% sodium azide
<b>Recommended Storage:</b>	Store at -20°C. Minimize freezing and thawing.
<b>Usage Summary:</b>	Immunohistochemistry: LS-B2853 was validated for use in immunohistochemistry on a panel of 21 formalin-fixed, paraffin-embedded (FFPE) human tissues after heat induced antigen retrieval in pH 6.0 citrate buffer. After incubation with the primary antibody, slides were incubated with biotinylated secondary antibody, followed by alkaline phosphatase-streptavidin and chromogen. The stained slides were evaluated by a pathologist to confirm staining specificity. The optimal working concentration for LS-B2853 was determined to be 2.5 ug/ml.
<b>Uses:</b>	IHC - Paraffin (2.5 µg/ml), ELISA (1:16000) (Optimal dilution to be determined by the researcher)
<b>Size:</b>	50 µg
<b>Concentration:</b>	0.5 mg/ml

**Immunohistochemistry Image:**



Anti-GGA3 antibody IHC of human kidney. Immunohistochemistry of formalin-fixed, paraffin-embedded tissue after heat-induced antigen retrieval. Antibody LS-B2853 concentration 5 ug/ml.

**Requested From:**

Japan

Laboratory Reagent For In Vitro Research Use Only

Not for resale without prior written consent from LifeSpan BioSciences, Inc.

Created on 9/23/2014

© 2014 LifeSpan BioSciences