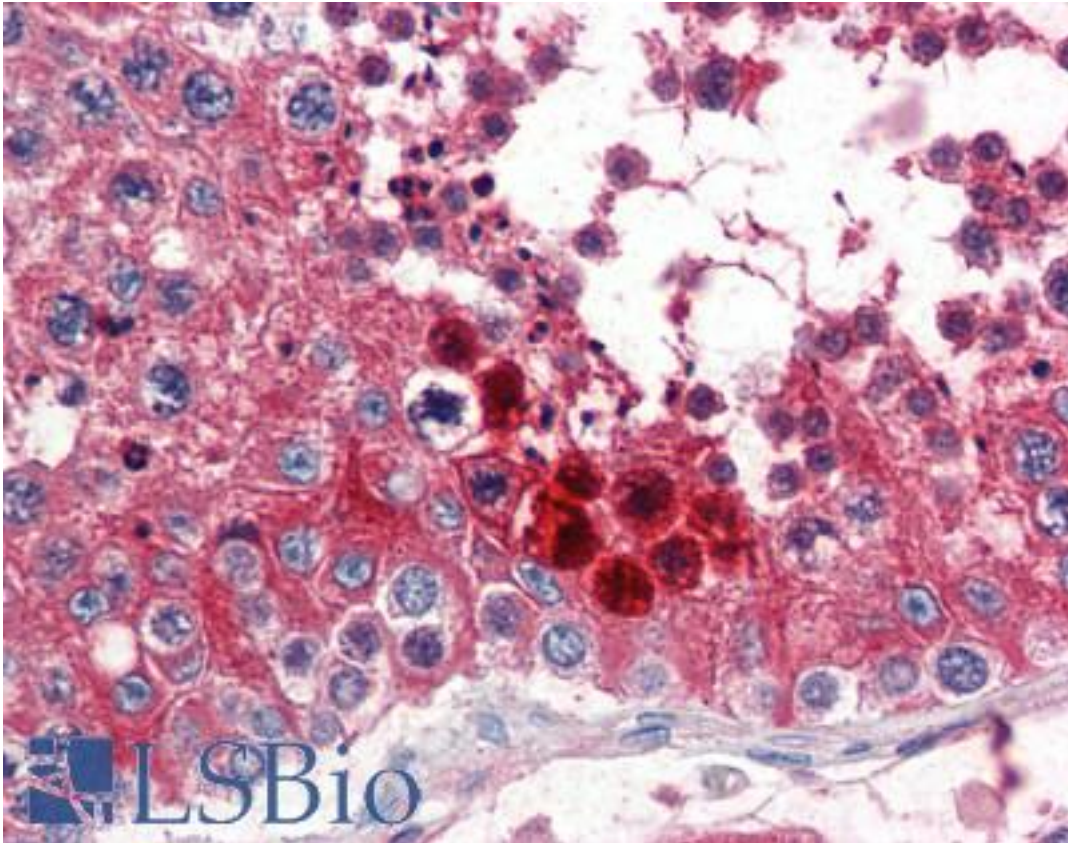


CLU / Clusterin Goat anti-Human Polyclonal (C-Terminus) Antibody - LS-B2852 - LSBio

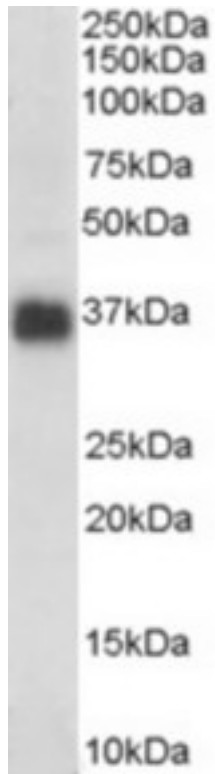
CatalogID:	LS-B2852
Validation:	This antibody replaces catalog number LS-C54661. It has been validated for use in the following assays: IHC-P.
Target:	clusterin
Synonyms:	CLU Antibody, APO-J Antibody, Apolipoprotein J Antibody, CLU1 Antibody, Clusterin Antibody, Complement lysis inhibitor Antibody, CLI Antibody, AAG4 Antibody, Aging-associated protein 4 Antibody, Ku70-binding protein 1 Antibody, KUB1 Antibody, SGP2 Antibody, APOJ Antibody, SGP-2 Antibody, Sulfated glycoprotein 2 Antibody, CLU2 Antibody, Complement cytolysis inhibitor Antibody, NA1/NA2 Antibody, SP-40 Antibody
Host	CLU antibody was produced in Goat
Clonality:	Polyclonal
Immunogen Species:	CLU / Clusterin antibody was raised against Human
Antigen Type:	Synthetic peptide
Immunogen:	CLU / Clusterin antibody was raised against synthetic peptide C-EKALQEYRKKHREE from the C-terminus of human CLU / Clusterin (NP_001822.2; NP_976084.1). Percent identity by BLAST analysis: Human, Gorilla, Marmoset (100%); Gibbon, Dog (93%); Monkey, Hamster, Rabbit, Horse (86%).
Specificity:	Human CLU / Clusterin. This antibody is expected to recognise both reported isoforms (NP_001822.2 and NP_976084.1)
Epitope:	C-Terminus
Reactivity:	Human, Gorilla, Monkey
Predicted Reactivity:	Gibbon, Dog
Purification:	Immunoaffinity purified
Presentation:	Tris-buffered saline, pH 7.3, 0.5% BSA, 0.02% sodium azide
Recommended Storage:	Store at -20°C. Minimize freezing and thawing.
Usage Summary:	Immunohistochemistry: LS-B2852 was validated for use in immunohistochemistry on a panel of 21 formalin-fixed, paraffin-embedded (FFPE) human tissues after heat induced antigen retrieval in pH 6.0 citrate buffer. After incubation with the primary antibody, slides were incubated with biotinylated secondary antibody, followed by alkaline phosphatase-streptavidin and chromogen. The stained slides were evaluated by a pathologist to confirm staining specificity. The optimal working concentration for LS-B2852 was determined to be 2.5 ug/ml.
Uses:	IHC - Paraffin (2.5 ug/ml), Western blot (1:32000) & (0.3 - 1 ug/ml), ELISA (1:32000) (Optimal dilution to be determined by the researcher)
Size:	50 ug
Concentration:	0.5 mg/ml

Immunohistochemistry Image:



Anti-Clusterin antibody IHC of human testis. Immunohistochemistry of formalin-fixed, paraffin-embedded tissue after heat-induced antigen retrieval. Antibody LS-B2852 concentration 5 ug/ml.

Western Blot Image:



Antibody (0.3 ug/ml) staining of human colon lysate (35 ug protein in RIPA buffer). Primary incubation was 1 hour. Detected by chemiluminescence.

Requested From:

Japan

Laboratory Reagent For In Vitro Research Use Only

Not for resale without prior written consent from LifeSpan BioSciences, Inc.

Created on 9/23/2014

© 2014 LifeSpan BioSciences