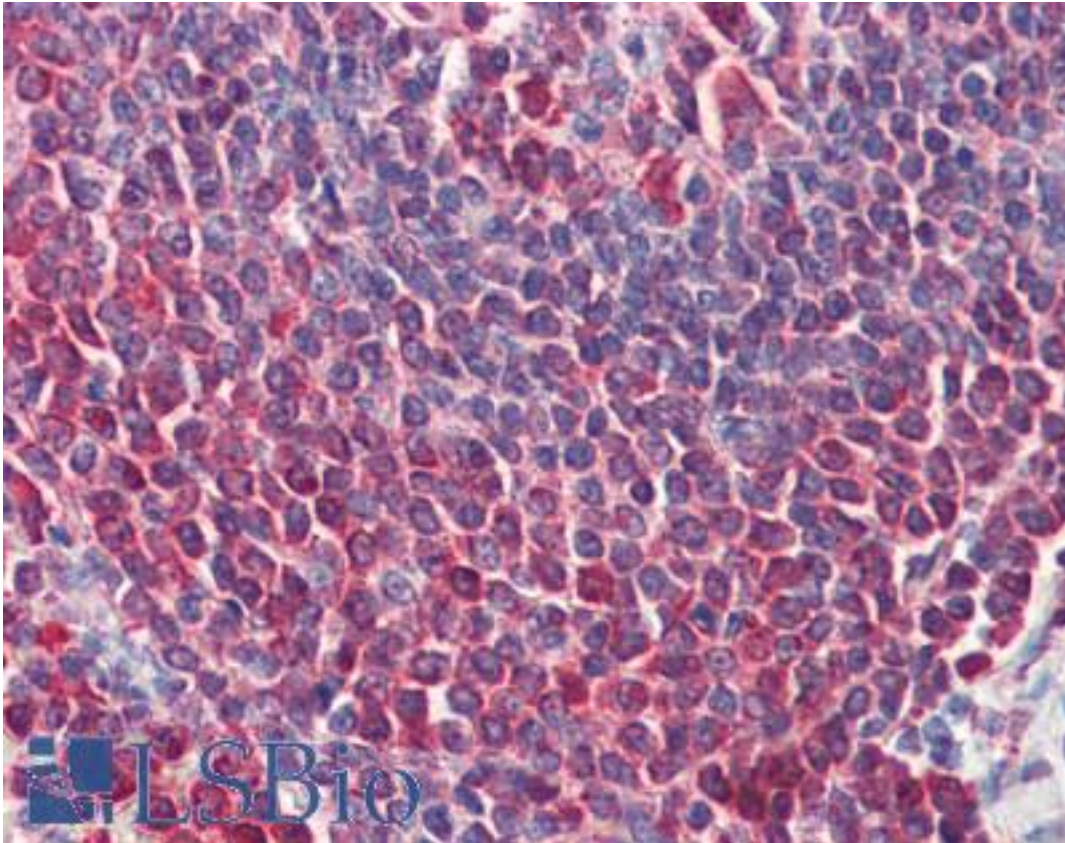


TLR9 Mouse anti-Human Monoclonal (aa268-284) (FITC) Antibody - LS-B2839 - LSBio	
CatalogID:	LS-B2839
Validation:	This antibody replaces catalog number LS-C10779. It has been validated for use in the following assays: IHC-P.
Target:	toll-like receptor 9 (TLR9)
Synonyms:	TLR9 Antibody, CD289 Antibody, CD289 antigen Antibody, Scri2a Antibody, Toll-like receptor 9 Antibody
Family / Subfamily:	Toll-like Receptor / not assigned-Toll-like Receptor
Host	TLR9 antibody was produced in Mouse
Clonality:	Monoclonal
Isotype:	IgG1
Conjugations:	Fluorescein (FITC)
Immunogen Species:	TLR9 antibody was raised against Human
Antigen Type:	Synthetic peptide
Immunogen:	TLR9 antibody was raised against synthetic peptide corresponding to aa 268-284 in the cytoplasmic portion of human TLR9 (Toll-like Receptor 9).
Specificity:	Recognizes human TLR9. Detects a band of ~120kD by Western blot, may also detect a smaller band of TLR9 isoform B.
Epitope:	aa268-284
Reactivity:	Human, Monkey, Mouse, Rat, Dog, Horse
Purification:	Protein G purified
Presentation:	10 mM Tris, 150 mM sodium chloride, 0.05% sodium azide.
Recommended Storage:	Short term 4°C, long term aliquot and store at -20°C, avoid freeze thaw cycles. Sensitive to light.
Usage Summary:	Immunohistochemistry: LS-B2839 was validated for use in immunohistochemistry on a panel of 21 formalin-fixed, paraffin-embedded (FFPE) human tissues after heat induced antigen retrieval in pH 6.0 citrate buffer. After incubation with the primary antibody, slides were incubated with biotinylated secondary antibody, followed by alkaline phosphatase-streptavidin and chromogen. The stained slides were evaluated by a pathologist to confirm staining specificity. The optimal working concentration for LS-B2839 was determined to be 5-10 ug/ml. Flow Cytometry (Intracellular): 0.1-2 ug/10 ⁶ cells; cell surface.
Uses:	IHC - Paraffin (5 - 10 µg/ml), IHC - Frozen (10 - 20 µg/ml), ICC, Western blot (1 - 3 µg/ml), Flow Cytometry (Optimal dilution to be determined by the researcher)
Size:	50 µg
Concentration:	0.5 mg/ml

Immunohistochemistry Image:



Anti-TLR9 antibody IHC of human spleen. Immunohistochemistry of formalin-fixed, paraffin-embedded tissue after heat-induced antigen retrieval. Antibody LS-B2839 concentration 10 ug/ml.

Requested From:

Japan

Laboratory Reagent For In Vitro Research Use Only

Not for resale without prior written consent from LifeSpan BioSciences, Inc.

Created on 9/23/2014

© 2014 LifeSpan BioSciences