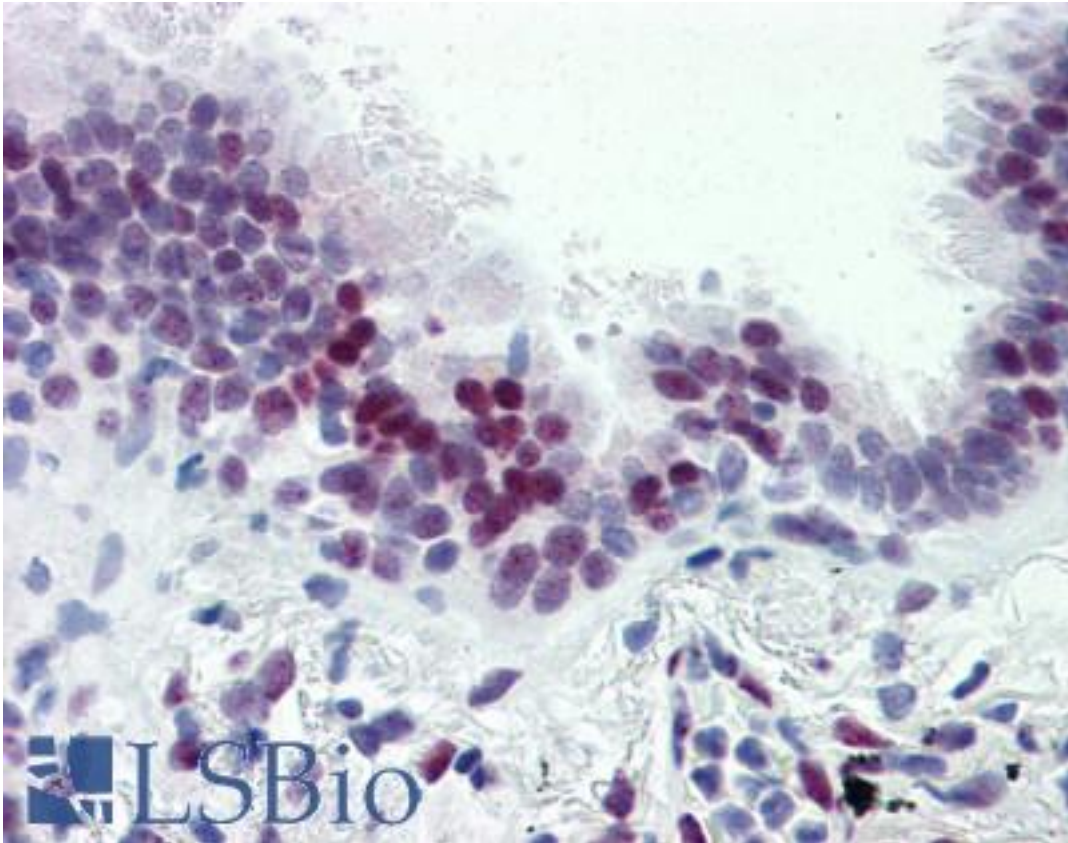


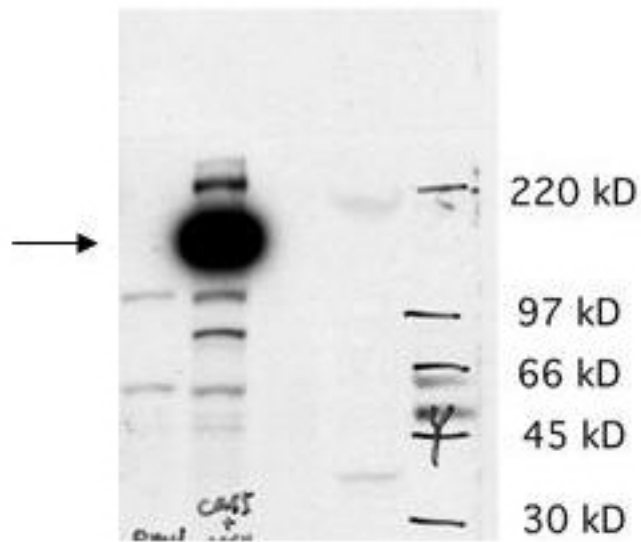
CASZ1 Rabbit anti-Human Polyclonal (N-Terminus) Antibody - LS-B2838 - LSBio	
<b>CatalogID:</b>	LS-B2838
<b>Validation:</b>	This antibody replaces catalog number LS-C60095. It has been validated for use in the following assays: IHC-P.
<b>Target:</b>	castor zinc finger 1 (CASZ1)
<b>Synonyms:</b>	CASZ1 Antibody, Castor-related protein Antibody, CAS11 Antibody, Castor Antibody, Castor homolog 1, zinc finger Antibody, CST Antibody, DJ734G22.1 Antibody, Zinc finger protein 693 Antibody, SRG Antibody, ZNF693 Antibody, Castor zinc finger 1 Antibody, Survival-related Antibody
<b>Host</b>	CASZ1 antibody was produced in Rabbit
<b>Clonality:</b>	Polyclonal
<b>Immunogen Species:</b>	CASZ1 antibody was raised against Human
<b>Antigen Type:</b>	Synthetic peptide
<b>Immunogen:</b>	CASZ1 antibody was raised against synthetic peptide corresponding to region near the amino terminal end of human Cas5 protein according to accession number CAI22571.
<b>Specificity:</b>	human Cas5 protein. A BLAST analysis was used to suggest cross reactivity with Cas5 from mouse, chimpanzee, bovine, and rat based on 100% homology with the immunizing sequence. Expect cross reactivity with multiple isoforms of this protein. Cross reactivity with Cas5 from other sources has not been determined
<b>Epitope:</b>	N-Terminus
<b>Reactivity:</b>	Human, Chimpanzee, Mouse, Rat, Bovine
<b>Purification:</b>	Immunoaffinity purified
<b>Presentation:</b>	0.02 M potassium phosphate, 0.15 M sodium chloride, pH 7.2.
<b>Recommended Storage:</b>	+4°C or -20°C, Avoid repeated freezing and thawing.
<b>Usage Summary:</b>	Immunohistochemistry: LS-B2838 was validated for use in immunohistochemistry on a panel of 21 formalin-fixed, paraffin-embedded (FFPE) human tissues after heat induced antigen retrieval in pH 6.0 citrate buffer. After incubation with the primary antibody, slides were incubated with biotinylated secondary antibody, followed by alkaline phosphatase-streptavidin and chromogen. The stained slides were evaluated by a pathologist to confirm staining specificity. The optimal working concentration for LS-B2838 was determined to be 5 ug/ml. Western Blot: A band approximately 125 kD in size corresponding to hCas5 protein is expected in the appropriate cell lysate or extract.
<b>Uses:</b>	IHC - Paraffin (5 µg/ml), Western blot (1:1000 - 1:3000), ELISA (1:25000 - 1:100000) (Optimal dilution to be determined by the researcher)
<b>Size:</b>	50 µg
<b>Concentration:</b>	1 mg/ml

**Immunohistochemistry Image:**



Anti-CASZ1 antibody IHC of human lung. Immunohistochemistry of formalin-fixed, paraffin-embedded tissue after heat-induced antigen retrieval. Antibody LS-B2838 concentration 5 ug/ml.

**Western Blot Image:**



Anti-hCas5 Antibody - Western Blot. Western blot of affinity purified anti-hCas5 antibody shows detection of a band ~125 kD in size corresponding to hCas5 (arrowhead). Lane 1 contains a lysate from AS cells transfected with empty vector. Lane 2 contains lysate from AS cells transfected with hCas5 (predicted MW 125 kD). Lane 3 contains lysate from BE2 cells that have been shown to contain a high level of hCas mRNA (as tested by Northern blot). Lane 4 contains lysate from human muscle tissue that also shows high levels of hCas mRNA. Specific band reactivity is effectively competed when the antibody is pre-incubated with the immunizing peptide (data not shown). Personal Communication. Carol Thiele, NCI, Bethesda, MD.

**Requested From:**

Japan

Laboratory Reagent For In Vitro Research Use Only

Not for resale without prior written consent from LifeSpan BioSciences, Inc.

Created on 9/23/2014

© 2014 LifeSpan BioSciences