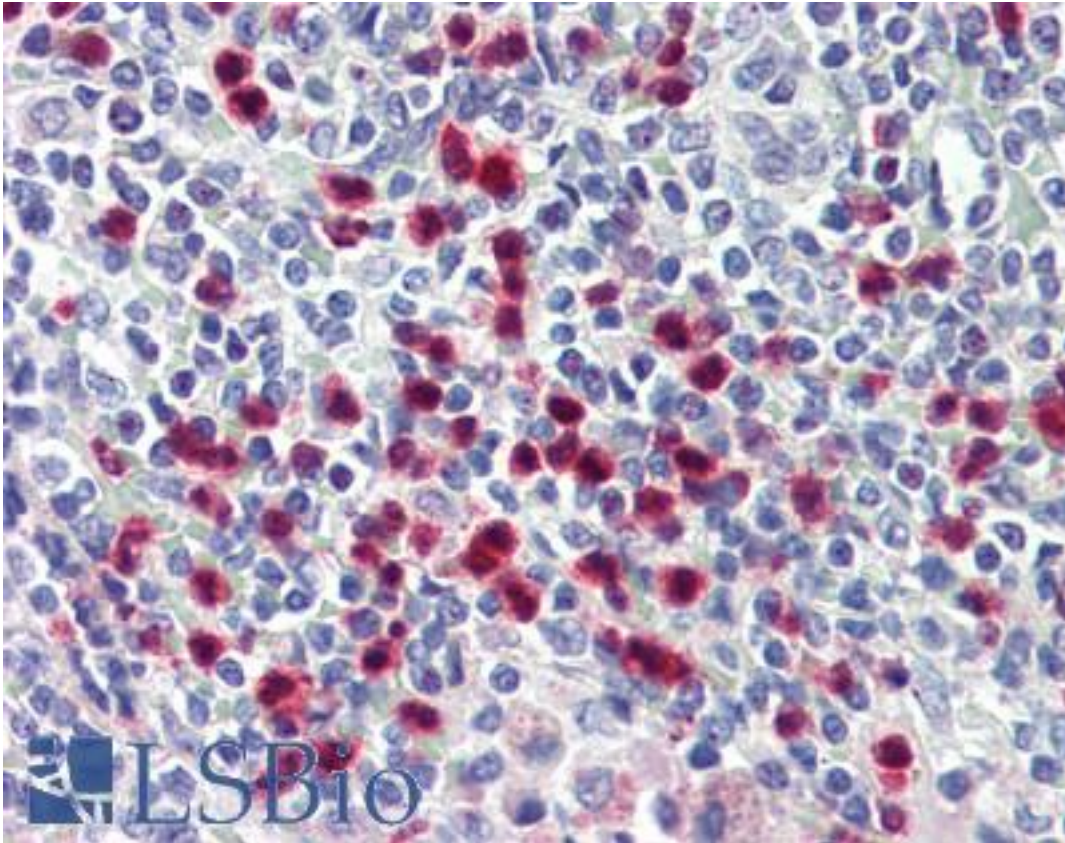


S100A8 / MRP8 Mouse anti-Human Monoclonal (FITC) (CF-145) Antibody - LS-B2836 - LSBio	
CatalogID:	LS-B2836
Validation:	This antibody replaces catalog number LS-C62798. It has been validated for use in the following assays: IHC-P.
Target:	S100 calcium binding protein A8 (S100A8)
Synonyms:	S100A8 Antibody, 60B8AG Antibody, CFAG Antibody, CAGA Antibody, Calgranulin A Antibody, Calgranulin-A Antibody, Calprotectin L1L subunit Antibody, Cystic fibrosis antigen Antibody, CGLA Antibody, L1Ag Antibody, NIF Antibody, p8 Antibody, Protein S100-A8 Antibody, MRP8 Antibody, Urinary stone protein band A Antibody, CP-10 Antibody, MA387 Antibody, MRP-8 Antibody
Host	S100A8 antibody was produced in Mouse
Clonality:	Monoclonal
Isotype:	IgG2b
Clone Name:	CF-145
Conjugations:	Fluorescein (FITC)
Immunogen Species:	S100A8 / MRP8 antibody was raised against Human
Immunogen:	S100A8 / MRP8 antibody was raised against purified granulocyte antigen of human origin.
Specificity:	Anti-Human Calgranulin A monoclonal antibody reacts with the human Calgranulin A protein. Calgranulin A, also known as MRP-8 and S 100A8 is a member of the S 100 family of proteins containing 2 EF hand (alpha helix, turn, alpha helix structure) calcium bi.
Reactivity:	Human
Purification:	Protein G purified
Presentation:	PBS, 0.02% sodium azide, EIA grade BSA.
Recommended Storage:	Long term: -20°C; Short term: +4°C; Avoid freeze-thaw cycles. Protect from light.
Usage Summary:	Immunohistochemistry: LS-B2836 was validated for use in immunohistochemistry on a panel of 21 formalin-fixed, paraffin-embedded (FFPE) human tissues after heat induced antigen retrieval in pH 6.0 citrate buffer. After incubation with the primary antibody, slides were incubated with biotinylated secondary antibody, followed by alkaline phosphatase-streptavidin and chromogen. The stained slides were evaluated by a pathologist to confirm staining specificity. The optimal working concentration for LS-B2836 was determined to be 1:50.
Uses:	IHC - Paraffin (1:50), Immunofluorescence, Western blot, Flow Cytometry (0.5 µg/10E6 cells) (Optimal dilution to be determined by the researcher)
Size:	50 µg
Concentration:	0.1 mg/ml

Immunohistochemistry Image:



Anti-S100A8 antibody IHC of human spleen. Immunohistochemistry of formalin-fixed, paraffin-embedded tissue after heat-induced antigen retrieval. Antibody LS-B2836 dilution 1:50.

Requested From:

Japan

Laboratory Reagent For In Vitro Research Use Only

Not for resale without prior written consent from LifeSpan BioSciences, Inc.

Created on 9/23/2014

© 2014 LifeSpan BioSciences