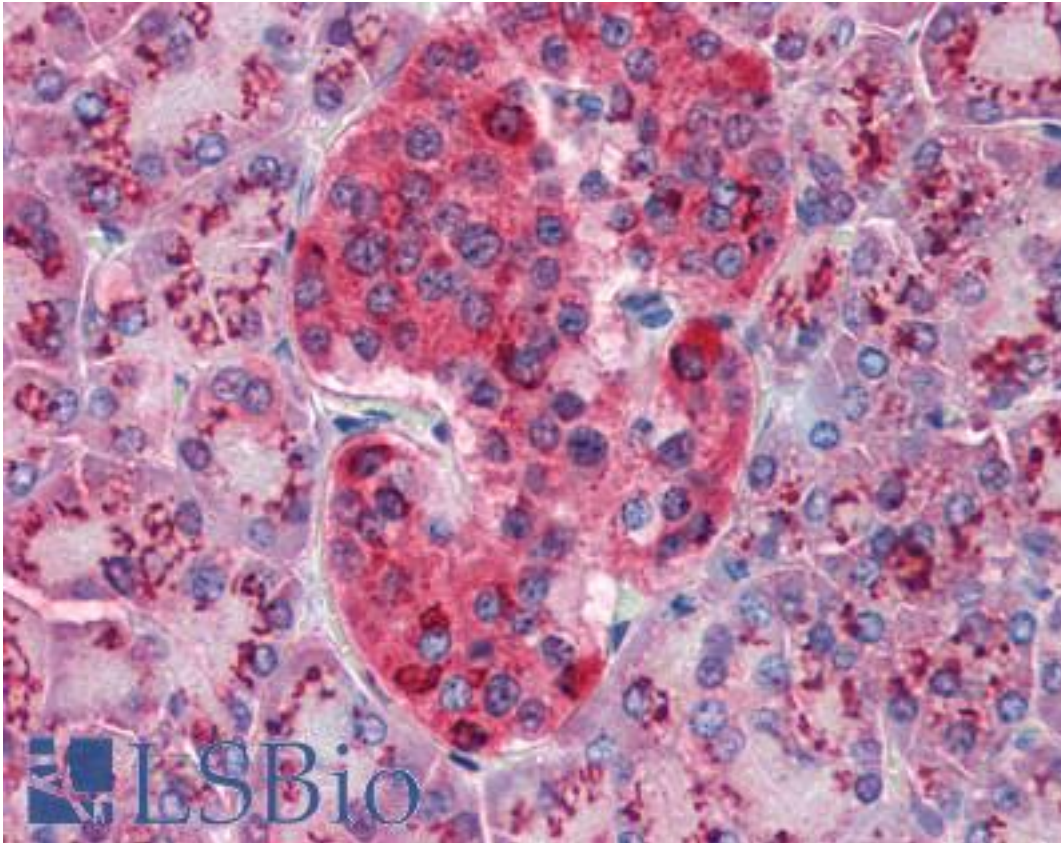


**FGFR / FGF Receptor Mouse anti-Human Monoclonal (pTyr653/Tyr654) Antibody - LS-B2833 - LSBio**

<b>CatalogID:</b>	LS-B2833
<b>Validation:</b>	This antibody replaces catalog number LS-C23656. It has been validated for use in the following assays: IHC-P.
<b>Target:</b>	Fibroblast Growth Factor Receptor (FGFR)
<b>Host</b>	Mouse
<b>Clonality:</b>	Monoclonal
<b>Isotype:</b>	IgG2b
<b>Immunogen Species:</b>	Human
<b>Antigen Type:</b>	Synthetic phospho-peptide
<b>Immunogen:</b>	Synthetic phosphopeptide corresponding to residues surrounding Tyr653/654 of human FGF receptor-1 (KLH coupled). The corresponding sequences are identical in FGF receptor-2, -3 and -4.
<b>Specificity:</b>	Detects overexpressed levels of Tyr653/654 phosphorylated FGF receptors. Slightly cross-reactivity with activated PDGF and insulin/IGF-I receptors. Does not cross-react with other tyrosine-phosphorylated proteins.
<b>Epitope:</b>	pTyr653/Tyr654
<b>Reactivity:</b>	Human
<b>Purification:</b>	Ascites
<b>Presentation:</b>	10 mM sodium HEPES, pH 7.5, 150 mM sodium chloride, 0.1 mg/ml BSA, 50% glycerol.
<b>Recommended Storage:</b>	Long term: -20°C; Short term: +4°C. Avoid repeat freeze-thaw cycles.
<b>Usage Summary:</b>	Immunohistochemistry: LS-B2833 was validated for use in immunohistochemistry on a panel of 21 formalin-fixed, paraffin-embedded (FFPE) human tissues after heat induced antigen retrieval in pH 6.0 citrate buffer. After incubation with the primary antibody, slides were incubated with biotinylated secondary antibody, followed by alkaline phosphatase-streptavidin and chromogen. The stained slides were evaluated by a pathologist to confirm staining specificity. The optimal working concentration for LS-B2833 was determined to be 1:50. Western Blot: 1:1000. Incubate membrane with diluted antibody in 5% nonfat dry milk, 1X TBS, 0.1% Tween-20 at 4uC with gentle shaking, overnight.
<b>Uses:</b>	IHC - Paraffin (1:50), Western blot (1:1000) (Optimal dilution to be determined by the researcher)
<b>Size:</b>	50 µl

**Immunohistochemistry Image:**



Anti-FGFR1 antibody IHC of human pancreas. Immunohistochemistry of formalin-fixed, paraffin-embedded tissue after heat-induced antigen retrieval. Antibody LS-B2833 dilution 1:50.

**Requested From:**

Japan

Laboratory Reagent For In Vitro Research Use Only

Not for resale without prior written consent from LifeSpan BioSciences, Inc.

Created on 9/23/2014

© 2014 LifeSpan BioSciences