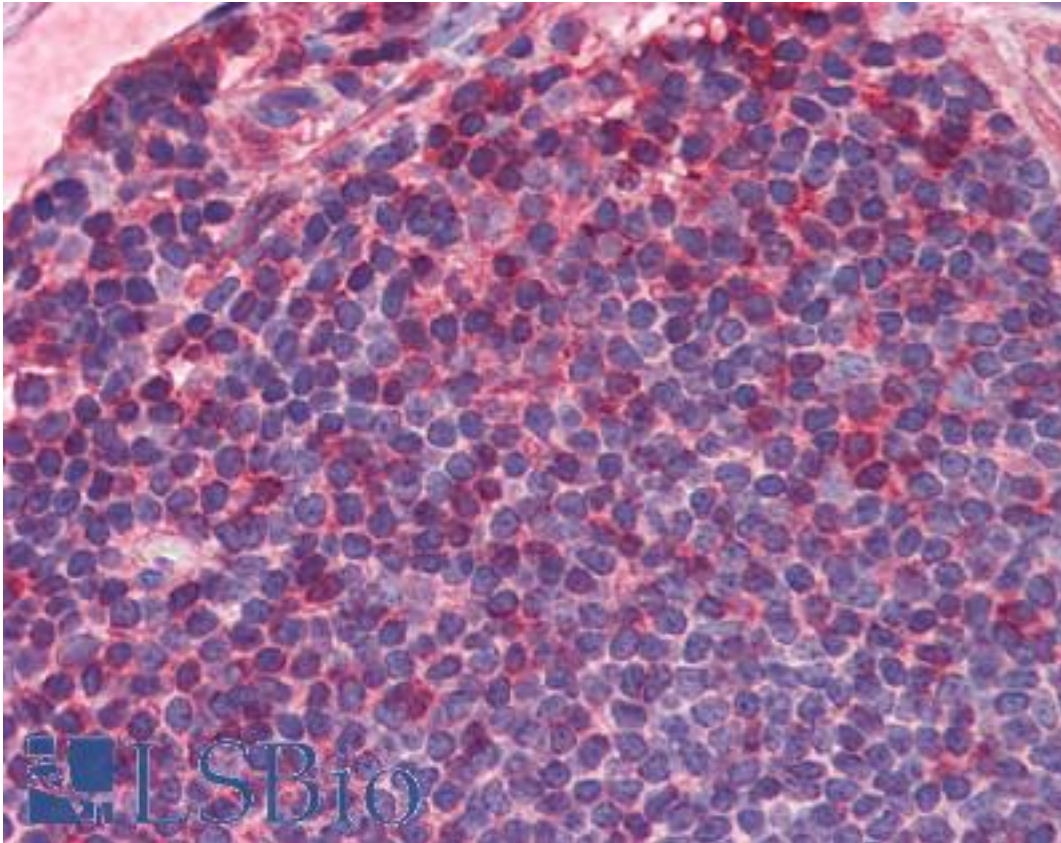


IL7R / CD127 Rabbit anti-Mouse Polyclonal (C-Terminus) Antibody - LS-B2830 - LSBio

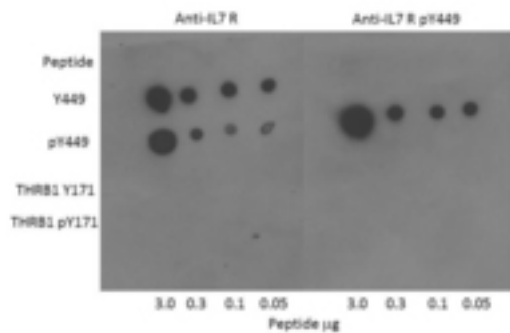
CatalogID:	LS-B2830
Validation:	This antibody replaces catalog number LS-C60125. It has been validated for use in the following assays: IHC-P.
Target:	interleukin 7 receptor (IL7R)
Synonyms:	IL7R Antibody, CD127 Antibody, CD127 antigen Antibody, IL-7RA Antibody, IL-7 receptor subunit alpha Antibody, IL7RA Antibody, ILRA Antibody, Interleukin 7 receptor Antibody, CDW127 Antibody, IL-7R subunit alpha Antibody, IL-7R-alpha Antibody
Family / Subfamily:	Interleukin
Host	IL7R antibody was produced in Rabbit
Clonality:	Polyclonal
Immunogen Species:	IL7R / CD127 antibody was raised against Mouse
Antigen Type:	Synthetic peptide
Immunogen:	IL7R / CD127 antibody was raised against synthetic peptide corresponding to a region near the carboxy terminus of mouse IL-7 protein.
Specificity:	A BLAST analysis was used to suggest cross-reactivity with IL-7 from human, mouse and rat sources based on 100% homology with the immunizing sequence. Cross-reactivity with IL-7 from other sources has not been determined
Epitope:	C-Terminus
Reactivity:	Mouse, Human, Rat
Purification:	Immunoaffinity purified
Presentation:	0.02 M potassium phosphate, 0.15 M sodium chloride, pH 7.2, 0.01% sodium azide.
Recommended Storage:	Short term 4°C, long term aliquot and store at -20°C, avoid freeze thaw cycles. Store undiluted.
Usage Summary:	Immunohistochemistry: LS-B2830 was validated for use in immunohistochemistry on a panel of 21 formalin-fixed, paraffin-embedded (FFPE) human tissues after heat induced antigen retrieval in pH 6.0 citrate buffer. After incubation with the primary antibody, slides were incubated with biotinylated secondary antibody, followed by alkaline phosphatase-streptavidin and chromogen. The stained slides were evaluated by a pathologist to confirm staining specificity. The optimal working concentration for LS-B2830 was determined to be 5 ug/ml. Western Blot: Expect a band approximately 55 kD in size corresponding to IL-7 in the appropriate cell lysate or extract.
Uses:	IHC - Paraffin (5 ug/ml), Western blot (1:1000 - 1:10000), ELISA (1:100000) (Optimal dilution to be determined by the researcher)
Size:	50 ug
Concentration:	0.82 mg/ml

Immunohistochemistry Image:



Anti-IL-7 Receptor antibody IHC of human colon, MALT. Immunohistochemistry of formalin-fixed, paraffin-embedded tissue after heat-induced antigen retrieval. Antibody LS-B2830 concentration 5 ug/ml.

Western Blot Image:



Dot Blot of Rabbit anti-IL-7 Receptor antibody. Antigen: IL-7 Receptor and IL-7 Receptor pY449 forms of the immunizing peptide and THRB1 and THRB1 pY171 as controls. Load: 3.0, 0.3, 0.1, 0.05 ug as indicated. Primary antibody: IL-7 Receptor antibody at 1:400 for 45 min at 4°C. Secondary antibody: Dylight488 rabbit secondary antibody at 1:10000 for 45 min at RT. Block: 5% BLOTTO overnight at 4°C.

Requested From:

Japan

Laboratory Reagent For In Vitro Research Use Only

Not for resale without prior written consent from LifeSpan BioSciences, Inc.

Created on 9/23/2014

© 2014 LifeSpan BioSciences