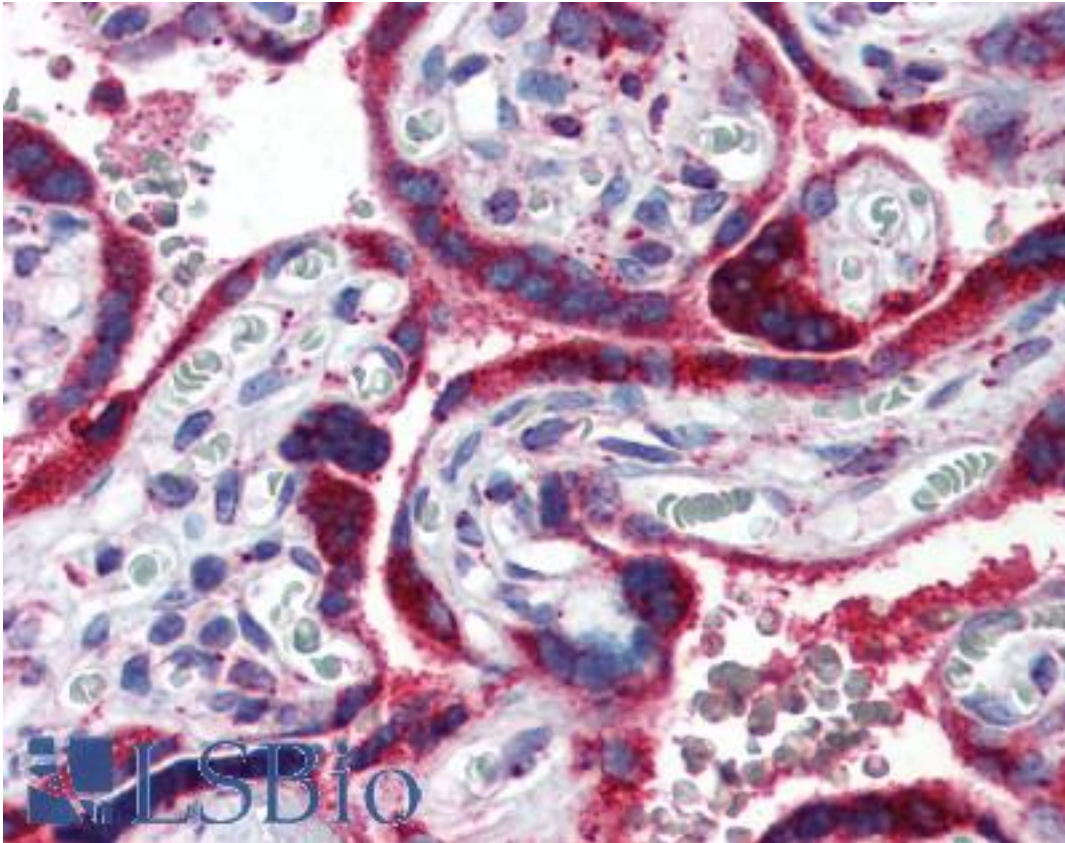


PPARG / PPAR Gamma Rabbit anti-Human Polyclonal (aa1-16) Antibody - LS-B2818 - LSBio	
<b>CatalogID:</b>	LS-B2818
<b>Validation:</b>	This antibody replaces catalog number LS-C17341. It has been validated for use in the following assays: IHC-P.
<b>Target:</b>	peroxisome proliferator-activated receptor gamma (PPARG)
<b>Synonyms:</b>	PPARG Antibody, NR1C3 Antibody, PPAR gamma Antibody, PPAR gamma 2 Antibody, PPARG1 Antibody, PPARG2 Antibody, PPARgamma Antibody, CIMT1 Antibody, GLM1 Antibody, PPAR-gamma Antibody
<b>Family / Subfamily:</b>	NHR / NR1 Thyroid hormone-like
<b>Host</b>	PPARG antibody was produced in Rabbit
<b>Clonality:</b>	Polyclonal
<b>Isotype:</b>	IgG
<b>Immunogen Species:</b>	PPARG / PPAR Gamma antibody was raised against Human
<b>Antigen Type:</b>	Synthetic peptide
<b>Immunogen:</b>	PPARG / PPAR Gamma antibody was raised against synthetic peptide corresponding to aa1-16 (MGETLGDSPIDPESDS) of human PPARg2 (peroxisome proliferator activated receptor g2). Percent identity by BLAST analysis: Human, Gibbon, Monkey, Marmoset (100%); Gorilla, Cat, Bat, Dog (94%); Pig (88%); Elephant (81%).
<b>Specificity:</b>	Recognizes mouse PPARg2. Does not cross-react with PPARa or PPARd.
<b>Epitope:</b>	aa1-16
<b>Reactivity:</b>	Human, Gibbon, Monkey
<b>Predicted Reactivity:</b>	Gorilla, Bat, Dog
<b>Purification:</b>	Immunoaffinity purified
<b>Presentation:</b>	PBS, 1 mg/ml BSA, 0.05% sodium azide.
<b>Recommended Storage:</b>	+4°C or -20°C, Avoid repeated freezing and thawing.
<b>Usage Summary:</b>	Immunohistochemistry: LS-B2818 was validated for use in immunohistochemistry on a panel of 21 formalin-fixed, paraffin-embedded (FFPE) human tissues after heat induced antigen retrieval in pH 6.0 citrate buffer. After incubation with the primary antibody, slides were incubated with biotinylated secondary antibody, followed by alkaline phosphatase-streptavidin and chromogen. The stained slides were evaluated by a pathologist to confirm staining specificity. The optimal working concentration for LS-B2818 was determined to be 2.5-5 ug/ml. Western Blot: 1:500. Detects a band of ~56kD.
<b>Uses:</b>	IHC - Paraffin (2.5 - 5 µg/ml), ICC (1:500), Western blot (1:500), Gel shift (Optimal dilution to be determined by the researcher)
<b>Size:</b>	50 µl
<b>Concentration:</b>	1 mg/ml

**Immunohistochemistry Image:**



Anti-PPARG antibody IHC of human placenta. Immunohistochemistry of formalin-fixed, paraffin-embedded tissue after heat-induced antigen retrieval. Antibody LS-B2818 concentration 5 ug/ml.

**Requested From:**

Japan

Laboratory Reagent For In Vitro Research Use Only

Not for resale without prior written consent from LifeSpan BioSciences, Inc.

Created on 9/23/2014

© 2014 LifeSpan BioSciences