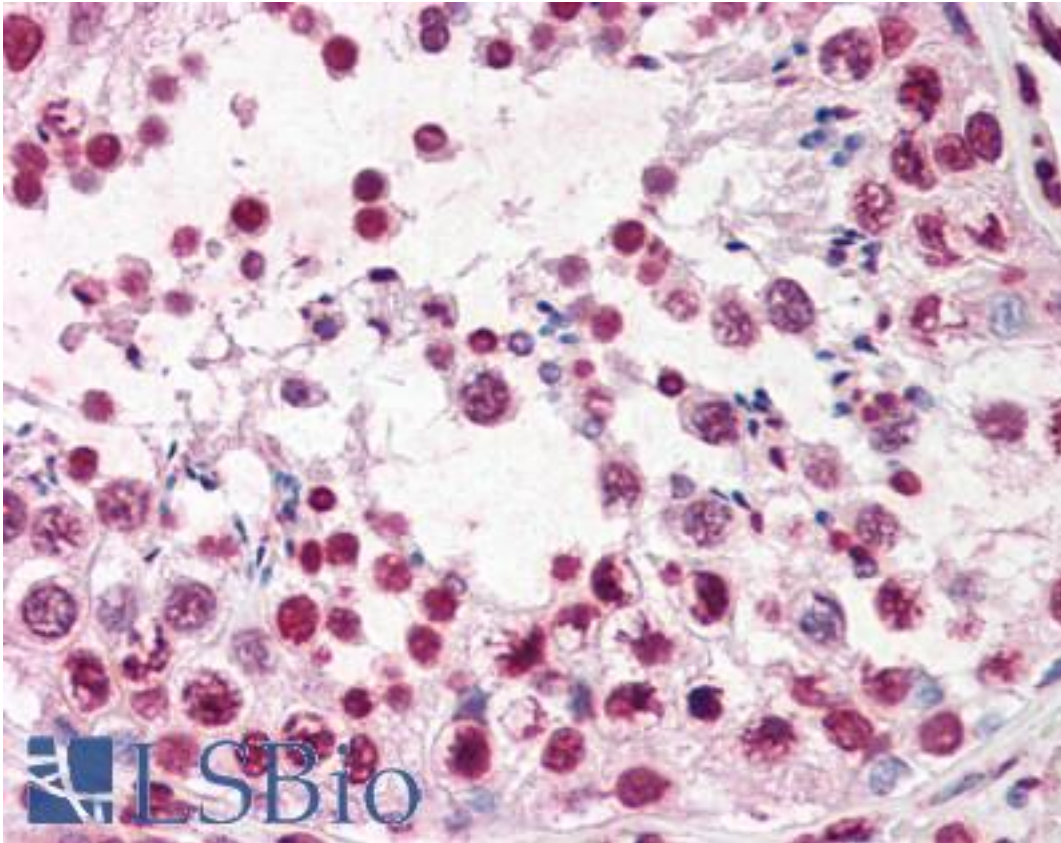


ERCC3 / XPB Mouse anti-Human Monoclonal (aa242-261) (3G4) Antibody - LS-B2815 - LSBio	
CatalogID:	LS-B2815
Validation:	This antibody replaces catalog number LS-C6713. It has been validated for use in the following assays: IHC-P.
Target:	excision repair cross-complementing rodent repair deficiency, complementation group 3 (ERCC3)
Synonyms:	ERCC3 Antibody, BTF2 Antibody, GTF2H Antibody, RAD25 Antibody, TFIIH p89 Antibody, TFIIH Antibody, XPB Antibody, BTF2 p89 Antibody, XPBC Antibody, TFIIH 89 kDa subunit Antibody
Host	ERCC3 antibody was produced in Mouse
Clonality:	Monoclonal
Isotype:	IgG2b
Clone Name:	3G4
Immunogen Species:	ERCC3 / XPB antibody was raised against Human
Antigen Type:	Synthetic peptide
Immunogen:	ERCC3 / XPB antibody was raised against synthetic peptide corresponding to aa242-261 of human ERCC-3.
Specificity:	Recognizes an epitope located between aa242-261 of ERCC-3 (largest subunit of TFIIH).
Epitope:	aa242-261
Reactivity:	Human
Purification:	Protein G purified
Presentation:	0.1 M Tris-HCl, pH 7.5.
Recommended Storage:	Long term: -20°C; Short term: +4°C. Avoid repeat freeze-thaw cycles.
Usage Summary:	Immunohistochemistry: LS-B2815 was validated for use in immunohistochemistry on a panel of 21 formalin-fixed, paraffin-embedded (FFPE) human tissues after heat induced antigen retrieval in pH 6.0 citrate buffer. After incubation with the primary antibody, slides were incubated with biotinylated secondary antibody, followed by alkaline phosphatase-streptavidin and chromogen. The stained slides were evaluated by a pathologist to confirm staining specificity. The optimal working concentration for LS-B2815 was determined to be 5-10 ug/ml. Immunoprecipitation: Immunoprecipitates transcriptionally active TFIIH in a reconstituted assay.
Uses:	IHC - Paraffin (5 - 10 µg/ml), Western blot, Immunoprecipitation, ELISA (Optimal dilution to be determined by the researcher)
Size:	50 µg
Concentration:	1 mg/ml

Immunohistochemistry Image:



Anti-ERCC3 / XPB antibody IHC of human testis. Immunohistochemistry of formalin-fixed, paraffin-embedded tissue after heat-induced antigen retrieval. Antibody LS-B2815 concentration 10 ug/ml.

Requested From:

Japan

Laboratory Reagent For In Vitro Research Use Only

Not for resale without prior written consent from LifeSpan BioSciences, Inc.

Created on 9/23/2014

© 2014 LifeSpan BioSciences