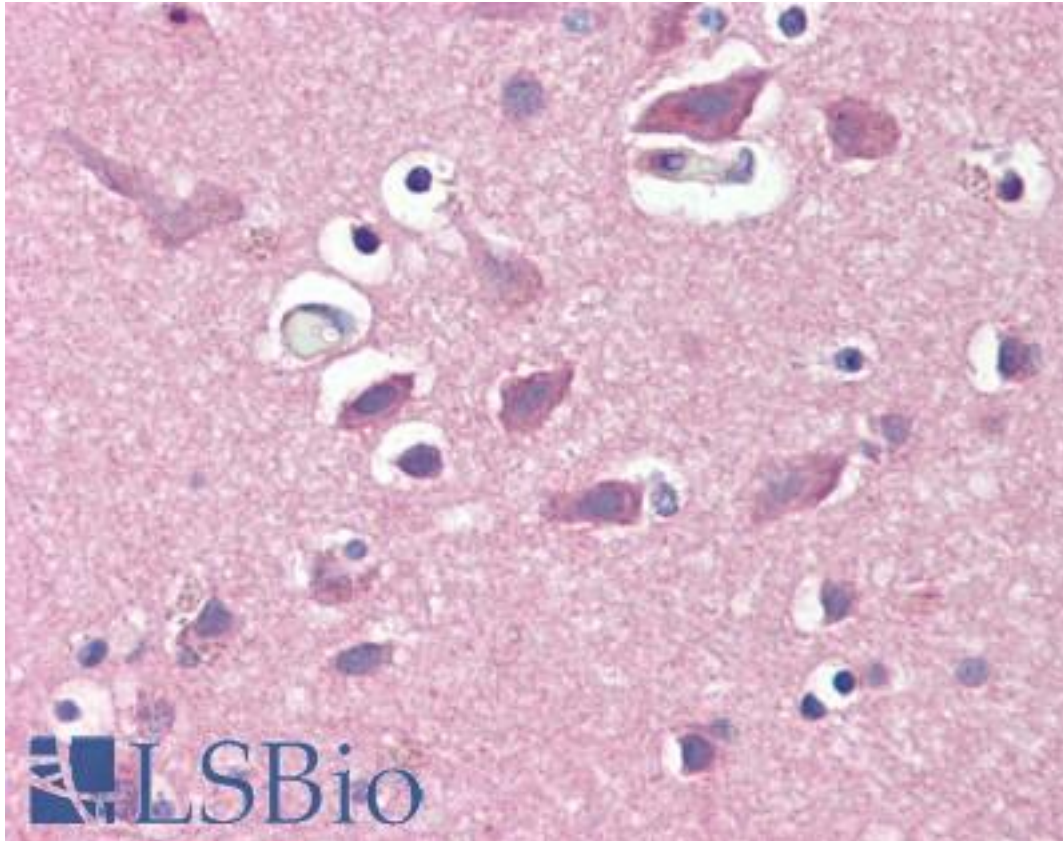


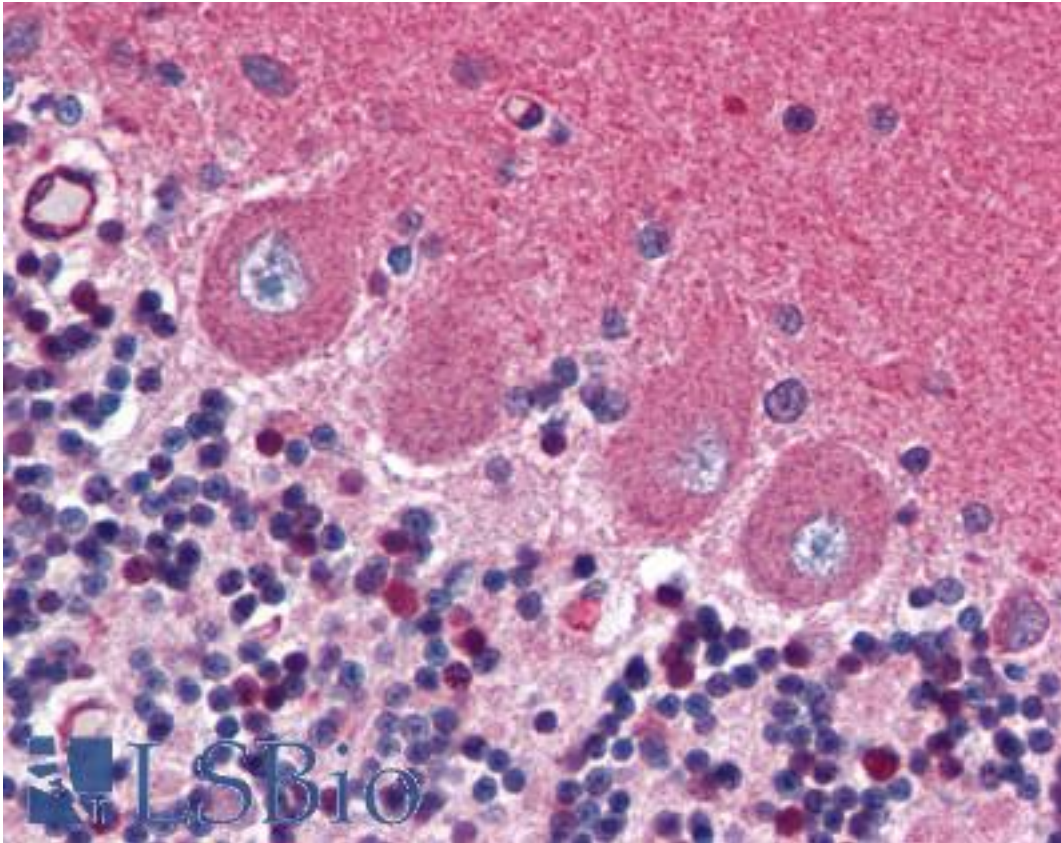
GRIA2 / GLUR2 Mouse anti-Human Monoclonal (aa175-430) Antibody - LS-B2811 - LSBio	
CatalogID:	LS-B2811
Validation:	This antibody replaces catalog number LS-C15367. It has been validated for use in the following assays: IHC-P.
Target:	glutamate receptor, ionotropic, AMPA 2 (GRIA2)
Synonyms:	GRIA2 Antibody, AMPA 2 Antibody, GluR-K2 Antibody, Glutamate receptor 2 Antibody, HBGR2 Antibody, GluA2 Antibody, GluR-2 Antibody, GluR-B Antibody, GLUR2 Antibody, GLURB Antibody
Family / Subfamily:	Ion Channel / Glutamate receptor - ionotropic (NMDA receptor)
Host	GRIA2 antibody was produced in Mouse
Clonality:	Monoclonal
Isotype:	IgG2a
Immunogen Species:	GRIA2 / GLUR2 antibody was raised against Human
Antigen Type:	Fusion protein
Immunogen:	GRIA2 / GLUR2 antibody was raised against fusion protein containing aa175-430 from the N-terminal region of GluR2.
Specificity:	Recognizes human GluR2 protein (~96kD). No cross-reactivity with other AMPA/Kainate GluR subunits. Species cross-reactivity: mouse, rat and monkey.
Epitope:	aa175-430
Reactivity:	Human, Monkey, Mouse, Rat
Purification:	Protein A purified
Presentation:	PBS, pH 7.4, 0.1% sodium azide.
Recommended Storage:	Long term: -20°C; Short term: +4°C. Avoid repeat freeze-thaw cycles.
Usage Summary:	Immunohistochemistry: LS-B2811 was validated for use in immunohistochemistry on a panel of 21 formalin-fixed, paraffin-embedded (FFPE) human tissues after heat induced antigen retrieval in pH 6.0 citrate buffer. After incubation with the primary antibody, slides were incubated with biotinylated secondary antibody, followed by alkaline phosphatase-streptavidin and chromogen. The stained slides were evaluated by a pathologist to confirm staining specificity. The optimal working concentration for LS-B2811 was determined to be 1:50.
Uses:	IHC - Paraffin (1:50), Western blot (1 - 5 µg/ml), ELISA (0.5 - 5 µg/ml) (Optimal dilution to be determined by the researcher)
Size:	50 µg
Concentration:	0.5 mg/ml

Immunohistochemistry Image:



Anti-GRIA2 / GLUR2 antibody IHC of human brain, cortex. Immunohistochemistry of formalin-fixed, paraffin-embedded tissue after heat-induced antigen retrieval. Antibody LS-B2811 dilution 1:50.

Immunohistochemistry Image:



Anti-GRIA2 / GLUR2 antibody IHC of human brain, cerebellum. Immunohistochemistry of formalin-fixed, paraffin-embedded tissue after heat-induced antigen retrieval. Antibody LS-B2811 dilution 1:50.

Requested From:

Japan

Laboratory Reagent For In Vitro Research Use Only

Not for resale without prior written consent from LifeSpan BioSciences, Inc.

Created on 9/23/2014

© 2014 LifeSpan BioSciences