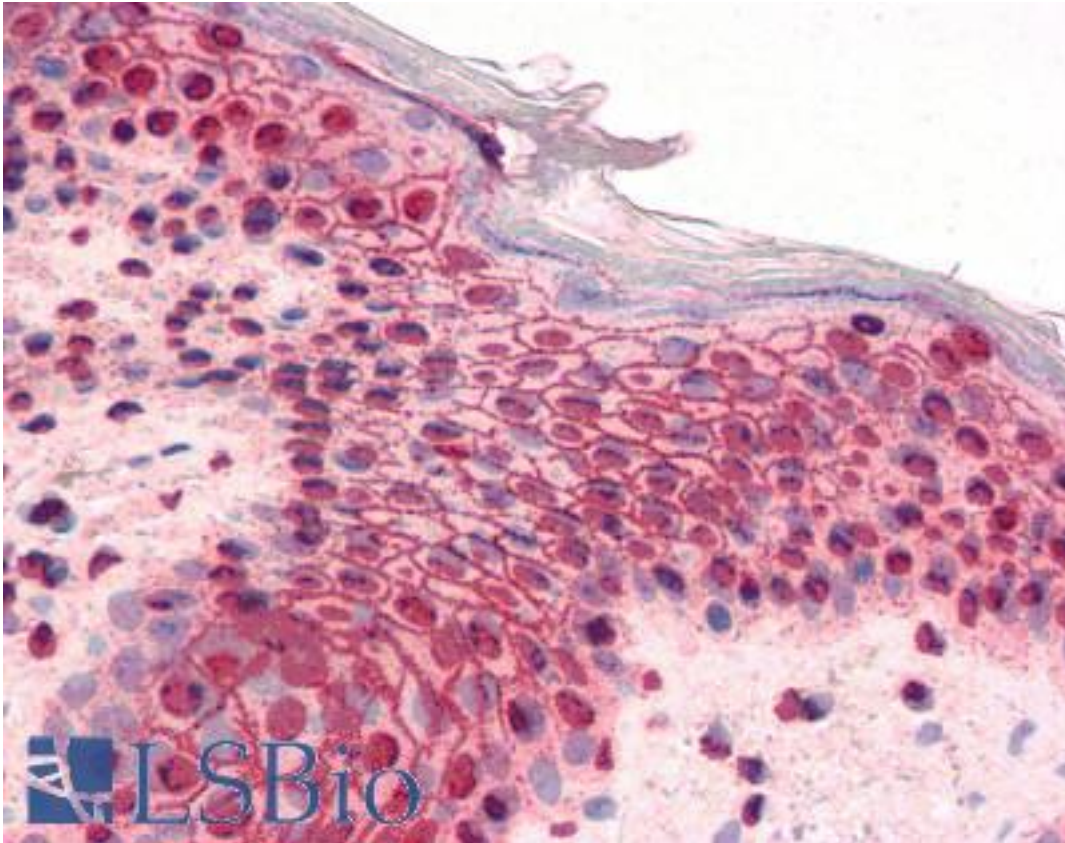


GLI2 Rabbit anti-Human Polyclonal (aa46-60) Antibody - LS-B2808 - LSBio

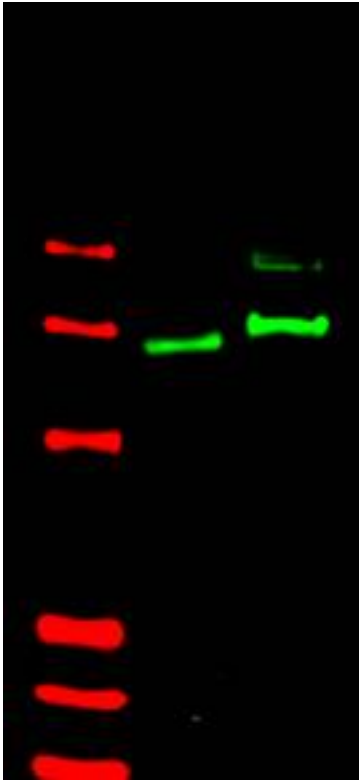
CatalogID:	LS-B2808
Validation:	This antibody replaces catalog number LS-C19040. It has been validated for use in the following assays: IHC-P.
Target:	GLI family zinc finger 2 (GLI2)
Synonyms:	GLI2 Antibody, GLI-Kruppel family member GLI2 Antibody, HPE9 Antibody, Gli-2 Antibody, Oncogene GLI2 Antibody, Tax helper protein 2 Antibody, THP Antibody, Zinc finger protein GLI2 Antibody, Tax helper protein Antibody, THP2 Antibody, GLI family zinc finger 2 Antibody, Tax helper protein 1 Antibody, THP1 Antibody
Host	GLI2 antibody was produced in Rabbit
Clonality:	Polyclonal
Immunogen Species:	GLI2 antibody was raised against Human
Antigen Type:	Synthetic peptide
Immunogen:	GLI2 antibody was raised against corresponds to amino acids 46-60 of human Gli-2 (isoform a).
Specificity:	Amino acids 46-60 of human Gli-2 (isoform a).
Epitope:	aa46-60
Reactivity:	Human, Chimpanzee
Purification:	Immunoaffinity purified
Presentation:	0.02 M potassium phosphate, 0.15 M sodium chloride, pH 7.2, 0.01% sodium azide.
Recommended Storage:	Long term: -20°C; Short term: +4°C. Avoid repeat freeze-thaw cycles.
Usage Summary:	Immunohistochemistry: LS-B2808 was validated for use in immunohistochemistry on a panel of 21 formalin-fixed, paraffin-embedded (FFPE) human tissues after heat induced antigen retrieval in pH 6.0 citrate buffer. After incubation with the primary antibody, slides were incubated with biotinylated secondary antibody, followed by alkaline phosphatase-streptavidin and chromogen. The stained slides were evaluated by a pathologist to confirm staining specificity. The optimal working concentration for LS-B2808 was determined to be 5 ug/ml. Western Blot: Multiple splice variants have been reported for this protein. Detection of Gli-2 by western blot may be enhanced if nuclear extracts are used instead of whole cell lysates as the expression/abundance of Gli-2 is likely to be low. Furthermore, Gli-2 expression is likely to be developmentally regulated and induced, making it difficult to detect in whole tissue homogenates.
Uses:	IHC - Paraffin (5 µg/ml), Western blot (1:500 - 1:2000), ELISA (1:2000 - 1:12000) (Optimal dilution to be determined by the researcher)
Size:	50 µg
Concentration:	1 mg/ml

Immunohistochemistry Image:



Anti-GLI2 antibody IHC of human skin. Immunohistochemistry of formalin-fixed, paraffin-embedded tissue after heat-induced antigen retrieval. Antibody LS-B2808 concentration 5 ug/ml.

Western Blot Image:



Anti-Gli-2 antibody shows detection of Gli-2 protein in rat testis (lane 1) and human HEK293 (lane 2) whole cell lysates (arrowhead).

Requested From:

Japan

Laboratory Reagent For In Vitro Research Use Only

Not for resale without prior written consent from LifeSpan BioSciences, Inc.

Created on 9/23/2014

© 2014 LifeSpan BioSciences