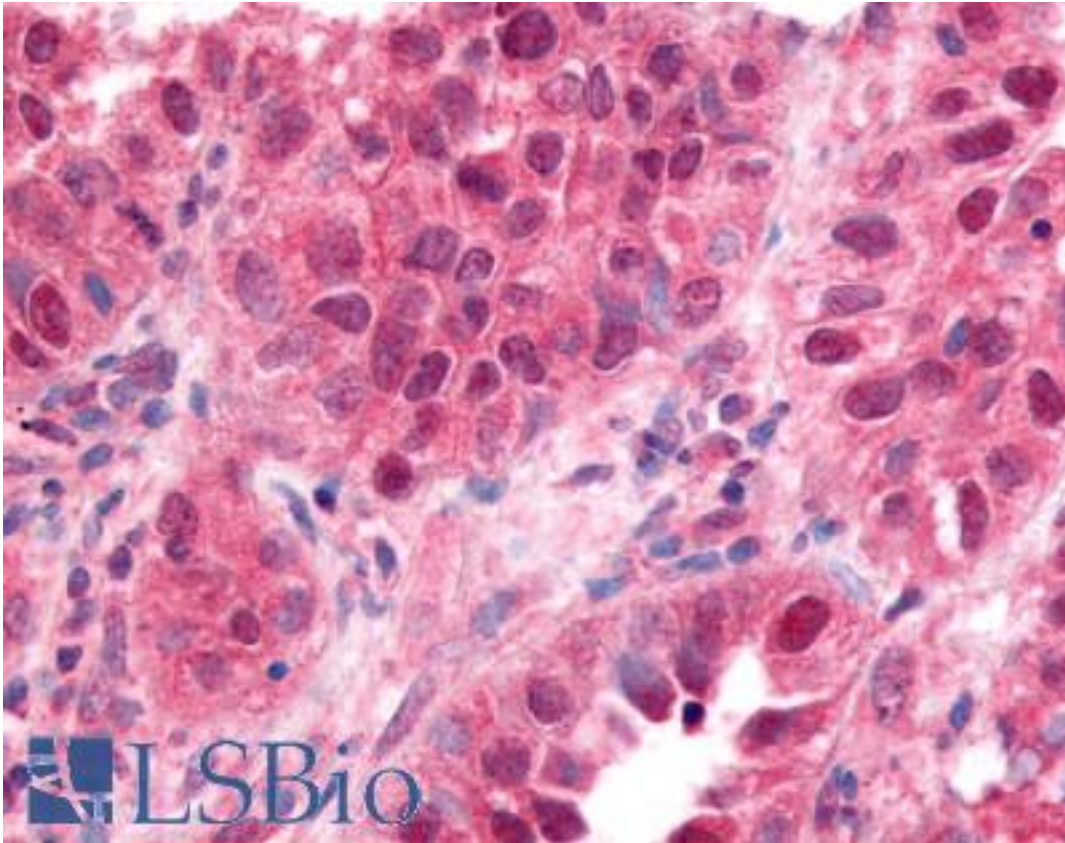


ZIF268 / EGR1 Rabbit anti-Human Polyclonal (aa94-108) Antibody - LS-B28 - LSBio

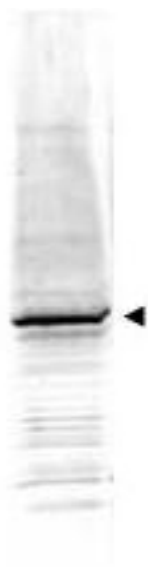
CatalogID:	LS-B28
Validation:	This antibody replaces catalog number LS-C18792. It has been validated for use in the following assays: IHC.
Target:	early growth response 1 (EGR1)
Synonyms:	EGR1 Antibody, AT225 Antibody, Early growth response 1 Antibody, G0S30 Antibody, KROX24 Antibody, NGFIA Antibody, KROX-24 Antibody, TIS8 Antibody, ZIF-268 Antibody, ZIF268 Antibody, Zinc finger protein Krox-24 Antibody, EGR-1 Antibody, NGFI-A Antibody, Transcription factor ETR103 Antibody, Transcription factor Zif268 Antibody, Zinc finger protein 225 Antibody
Host	EGR1 antibody was produced in Rabbit
Clonality:	Polyclonal
Immunogen Species:	ZIF268 / EGR1 antibody was raised against Human
Antigen Type:	Synthetic peptide
Immunogen:	ZIF268 / EGR1 antibody was raised against synthetic peptide from human EGR1.
Specificity:	Amino acids 94-108 of Human EGR-1.
Epitope:	aa94-108
Reactivity:	Human, Chimpanzee, Mouse
Purification:	Immunoaffinity purified
Presentation:	0.02 M potassium phosphate, 0.15 M sodium chloride, pH 7.2, 0.01% sodium azide.
Recommended Storage:	+4°C or -20°C, Avoid repeated freezing and thawing.
Usage Summary:	Immunohistochemistry: LS-B28 was validated for use in immunohistochemistry on a panel of 21 formalin-fixed, paraffin-embedded (FFPE) human tissues after heat induced antigen retrieval in pH 6.0 citrate buffer. After incubation with the primary antibody, slides were incubated with biotinylated secondary antibody, followed by alkaline phosphatase-streptavidin and chromogen. The stained slides were evaluated by a pathologist to confirm staining specificity. The optimal working concentration for LS-B28 was determined to be 10 ug/ml.
Uses:	IHC - Paraffin (10 µg/ml), Western blot (1:500 - 1:3000), ELISA (1:4000 - 1:16000) (Optimal dilution to be determined by the researcher)
Size:	50 µg
Concentration:	0.93 mg/ml

Immunohistochemistry Image:



Anti-EGR1 antibody IHC of human lung small cell carcinoma. Immunohistochemistry of formalin-fixed, paraffin-embedded tissue after heat-induced antigen retrieval. Antibody LS-B28 concentration 10 ug/ml.

Western Blot Image:



Anti-EGR-1 Antibody - Western Blot. Western blot of Affinity Purified anti-EGR-1 antibody shows detection of a predominant band at ~58 kD corresponding to EGR-1 present in mouse embryonic fibroblast whole cell lysate (arrowhead). Approximately 35 ug of lysate was separated by 4-20% SDS-PAGE and transferred onto nitrocellulose. After blocking the membrane was probed with the primary antibody diluted to 1:1500. Reaction occurred 2 hours at room temperature followed by washes and reaction with a 1:10000 dilution of IRDye800 conjugated Gt-a-Rabbit IgG [H&L] MX (for 45 min at room temperature. IRDye800 fluorescence image was captured using the Odyssey Infrared Imaging System developed by LI-COR. IRDye is a trademark of LI-COR, Inc. Other detection systems will yield similar results.

Requested From:

Japan

Laboratory Reagent For In Vitro Research Use Only

Not for resale without prior written consent from LifeSpan BioSciences, Inc.

Created on 9/23/2014

© 2014 LifeSpan BioSciences