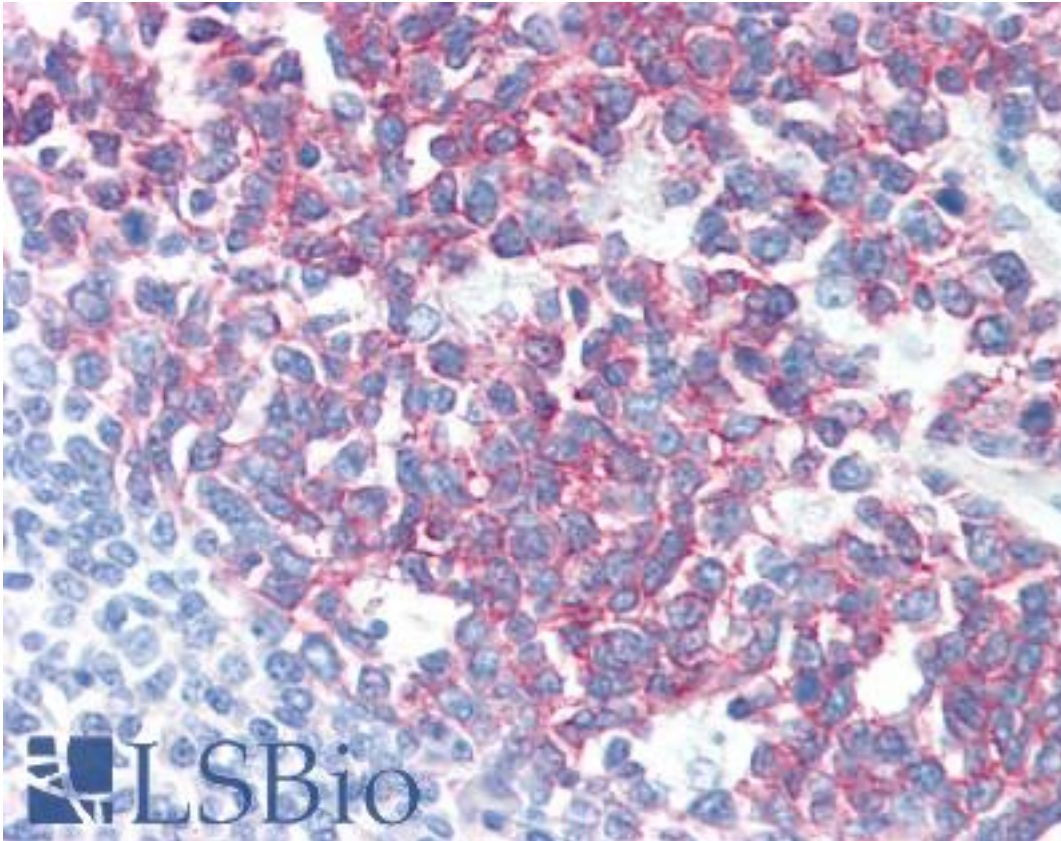


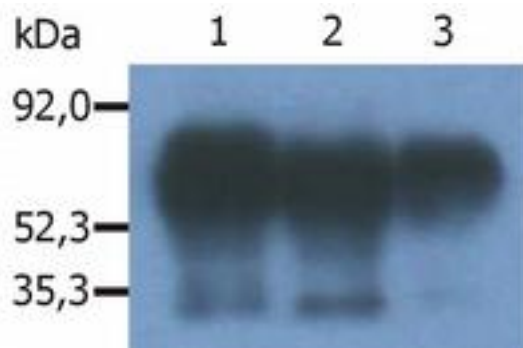
PAG1 / PAG Mouse anti-Human Monoclonal (C-Terminus) (PAG-C1) Antibody - LS-B2794 - LSBio	
CatalogID:	LS-B2794
Validation:	This antibody replaces catalog number LS-C45990. It has been validated for use in the following assays: IHC-P.
Target:	phosphoprotein associated with glycosphingolipid microdomains 1 (PAG1)
Synonyms:	PAG1 Antibody, Csk-binding protein Antibody, CBP Antibody, PAG Antibody
Host	PAG1 antibody was produced in Mouse
Clonality:	Monoclonal
Isotype:	IgG2b
Clone Name:	PAG-C1
Immunogen Species:	PAG1 / PAG antibody was raised against Human
Antigen Type:	Synthetic peptide
Immunogen:	PAG1 / PAG antibody was raised against c-terminal peptide (last 15 amino acids) of human Csk binding protein coupled to KLH.
Specificity:	Recognizes an epitope located in the C-terminal domain of Csk-binding protein (Cbp / PAG), a 46 kD ubiquitously expressed transmembrane adaptor protein present in membrane rafts (glycosphingolipid-enriched microdomains), which however migrates on SDS PAGE gels anomalously as an 80 kD molecule.
Epitope:	C-Terminus
Reactivity:	Human, Mouse, Rat, Bovine
Purification:	Protein A purified
Presentation:	PBS, 15 mM sodium azide, approx., pH 7.4.
Recommended Storage:	+4°C or -20°C, Avoid repeated freezing and thawing.
Usage Summary:	Immunohistochemistry: LS-B2794 was validated for use in immunohistochemistry on a panel of 21 formalin-fixed, paraffin-embedded (FFPE) human tissues after heat induced antigen retrieval in pH 6.0 citrate buffer. After incubation with the primary antibody, slides were incubated with biotinylated secondary antibody, followed by alkaline phosphatase-streptavidin and chromogen. The stained slides were evaluated by a pathologist to confirm staining specificity. The optimal working concentration for LS-B2794 was determined to be 15 ug/ml.
Uses:	IHC - Paraffin (15 µg/ml), Immunoprecipitation (Optimal dilution to be determined by the researcher)
Size:	50 µg
Concentration:	1 mg/ml

Immunohistochemistry Image:



Anti-PAG1 / PAG antibody IHC of human tonsil. Immunohistochemistry of formalin-fixed, paraffin-embedded tissue after heat-induced antigen retrieval. Antibody LS-B2794 concentration 15 ug/ml.

Immunoprecipitation Image:



Immunoprecipitation of human Cbp/PAG from the lysate of RAJI human Burkitt lymphoma cell line. An alternate antibody was used for detection of the immunoprecipitated protein.

Requested From:

Japan

Laboratory Reagent For In Vitro Research Use Only

Not for resale without prior written consent from LifeSpan BioSciences, Inc.

Created on 9/23/2014

© 2014 LifeSpan BioSciences