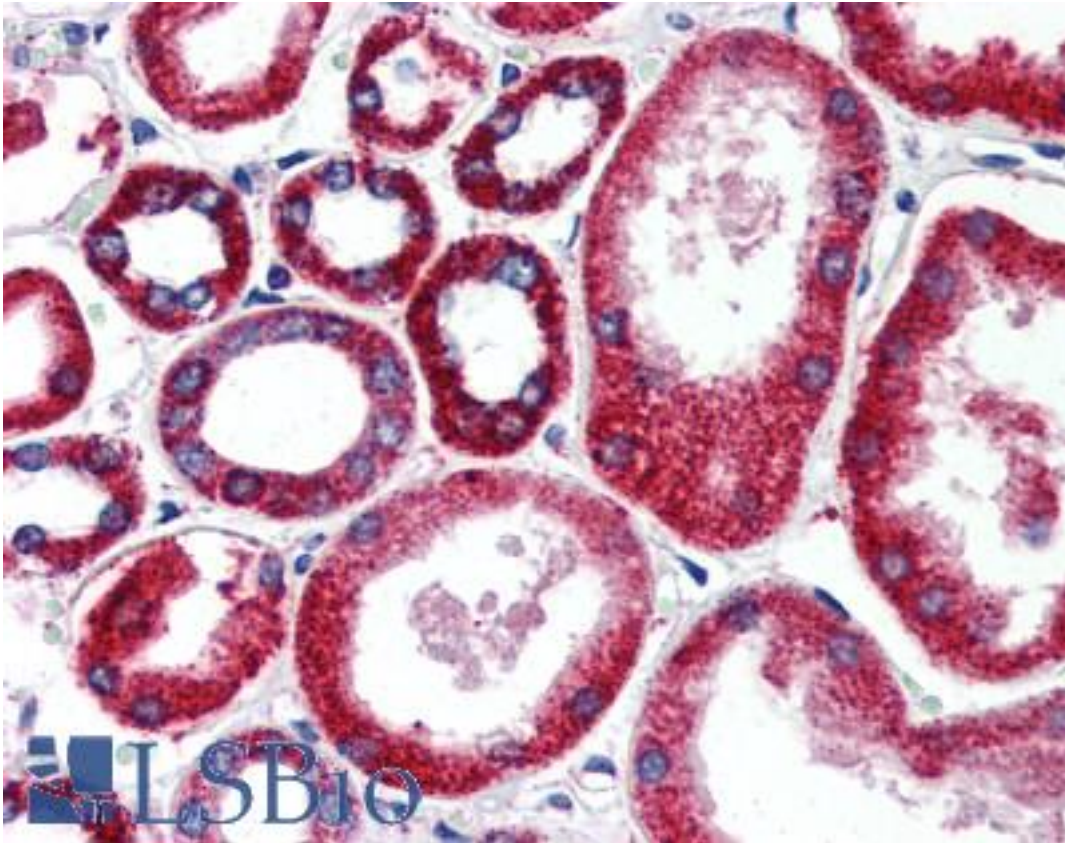


FOLH1 / PSMA Rabbit anti-Human Polyclonal Antibody - LS-B2782 - LSBio	
CatalogID:	LS-B2782
Validation:	This antibody replaces catalog number LS-C50507. It has been validated for use in the following assays: IHC-P.
Target:	folate hydrolase (prostate-specific membrane antigen) 1 (FOLH1)
Synonyms:	FOLH1 Antibody, Folate hydrolase 1 Antibody, GCP11 Antibody, Glutamate carboxypeptidase II Antibody, Folate hydrolase Antibody, GCP2 Antibody, NAALAD1 Antibody, NAALAdase Antibody, NAALADase I Antibody, PSM Antibody, FGCP Antibody, FOLH Antibody, Glutamate carboxylase II Antibody, Glutamate carboxypeptidase 2 Antibody, MGCP Antibody, PSMA Antibody
Host	FOLH1 antibody was produced in Rabbit
Clonality:	Polyclonal
Immunogen Species:	FOLH1 / PSMA antibody was raised against Human
Antigen Type:	Synthetic peptide
Immunogen:	FOLH1 / PSMA antibody was raised against synthetic peptide of human PSMA.
Reactivity:	Human
Purification:	Immunoaffinity purified
Presentation:	10 mM PBS, pH 7.4, BSA, sodium azide.
Recommended Storage:	+4°C or -20°C, Avoid repeated freezing and thawing.
Usage Summary:	Immunohistochemistry: LS-B2782 was validated for use in immunohistochemistry on a panel of 21 formalin-fixed, paraffin-embedded (FFPE) human tissues after heat induced antigen retrieval in pH 6.0 citrate buffer. After incubation with the primary antibody, slides were incubated with biotinylated secondary antibody, followed by alkaline phosphatase-streptavidin and chromogen. The stained slides were evaluated by a pathologist to confirm staining specificity. The optimal working concentration for LS-B2782 was determined to be 15 ug/ml.
Uses:	IHC - Paraffin (15 µg/ml) (Optimal dilution to be determined by the researcher)
Size:	250 µl

Immunohistochemistry Image:



Anti-FOLH1 / PSMA antibody IHC of human kidney. Immunohistochemistry of formalin-fixed, paraffin-embedded tissue after heat-induced antigen retrieval. Antibody LS-B2782 concentration 15 ug/ml.

Requested From:

Japan

Laboratory Reagent For In Vitro Research Use Only

Not for resale without prior written consent from LifeSpan BioSciences, Inc.

Created on 9/23/2014

© 2014 LifeSpan BioSciences