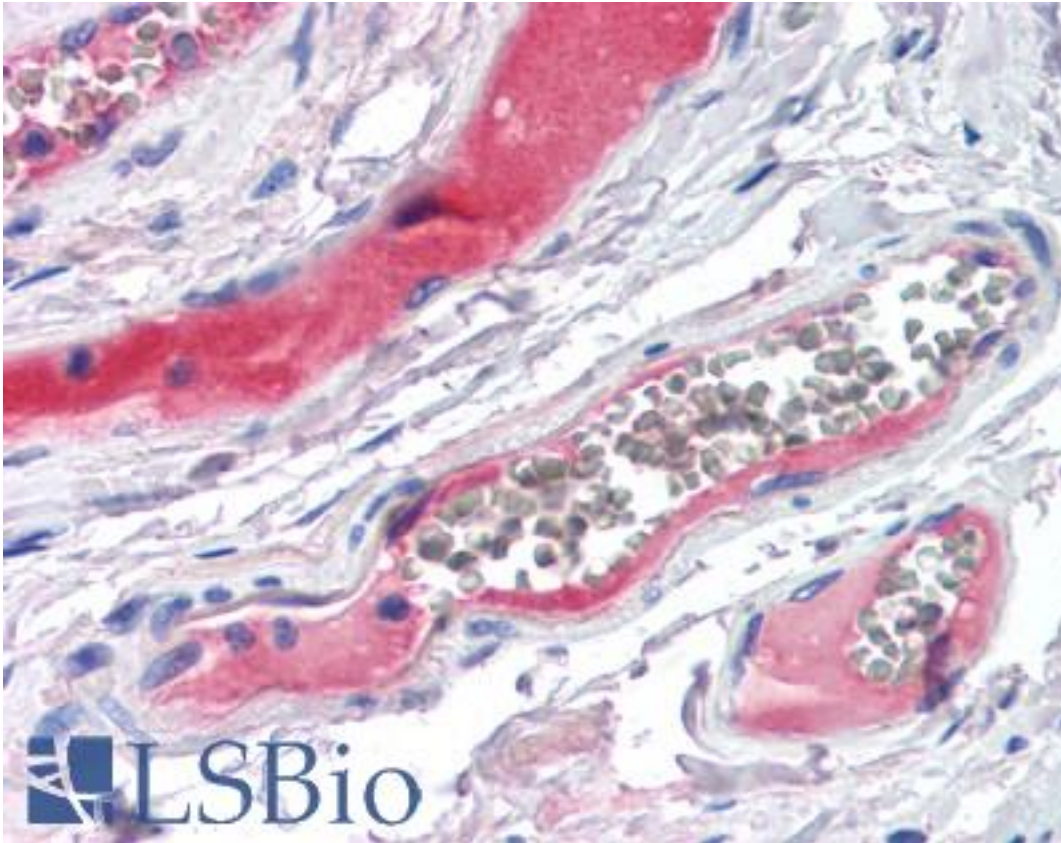


KLKB1 / Plasma Kallikrein Sheep anti-Human Polyclonal Antibody - LS-B2772 - LSBio	
<b>CatalogID:</b>	LS-B2772
<b>Validation:</b>	This antibody replaces catalog number LS-C38309. It has been validated for use in the following assays: IHC-P.
<b>Target:</b>	kallikrein B, plasma (Fletcher factor) 1 (KLKB1)
<b>Synonyms:</b>	KLKB1 Antibody, Fletcher factor deficiency Antibody, Fletcher factor Antibody, Kininogenin Antibody, Plasma kallikrein Antibody, PKK deficiency Antibody, Plasma kallikrein heavy chain Antibody, PPK Antibody, Prekallikrein deficiency Antibody, Plasma kallikrein light chain Antibody, Plasma prekallikrein Antibody, Kallikrein 3 Antibody
<b>Family / Subfamily:</b>	Protease / Serine S1
<b>Host</b>	KLKB1 antibody was produced in Sheep
<b>Clonality:</b>	Polyclonal
<b>Isotype:</b>	IgG
<b>Immunogen Species:</b>	KLKB1 / Plasma Kallikrein antibody was raised against Human
<b>Antigen Type:</b>	Purified protein
<b>Immunogen:</b>	KLKB1 / Plasma Kallikrein antibody was raised against human Prekallikrein (PK) purified from plasma.
<b>Specificity:</b>	Specific for PK as demonstrated by immunoelectrophoresis and ELISA.
<b>Reactivity:</b>	Human
<b>Purification:</b>	Ammonium sulfate precipitation
<b>Presentation:</b>	10 mM HEPES, pH 7.4, 0.15 M sodium chloride, 50% glycerol.
<b>Recommended Storage:</b>	+4°C or -20°C, Avoid repeated freezing and thawing.
<b>Usage Summary:</b>	Immunohistochemistry: LS-B2772 was validated for use in immunohistochemistry on a panel of 21 formalin-fixed, paraffin-embedded (FFPE) human tissues after heat induced antigen retrieval in pH 6.0 citrate buffer. After incubation with the primary antibody, slides were incubated with biotinylated secondary antibody, followed by alkaline phosphatase-streptavidin and chromogen. The stained slides were evaluated by a pathologist to confirm staining specificity. The optimal working concentration for LS-B2772 was determined to be 5 ug/ml.
<b>Uses:</b>	IHC - Paraffin (5 µg/ml), ELISA, Immunoelectrophoresis (Optimal dilution to be determined by the researcher)
<b>Size:</b>	50 µg
<b>Concentration:</b>	1 mg/ml

**Immunohistochemistry Image:**



Anti-KLKB1 antibody IHC of human small intestine, vessels. Immunohistochemistry of formalin-fixed, paraffin-embedded tissue after heat-induced antigen retrieval. Antibody LS-B2772 concentration 5 ug/ml.

**Requested From:**

Japan

Laboratory Reagent For In Vitro Research Use Only

Not for resale without prior written consent from LifeSpan BioSciences, Inc.

Created on 9/23/2014

© 2014 LifeSpan BioSciences