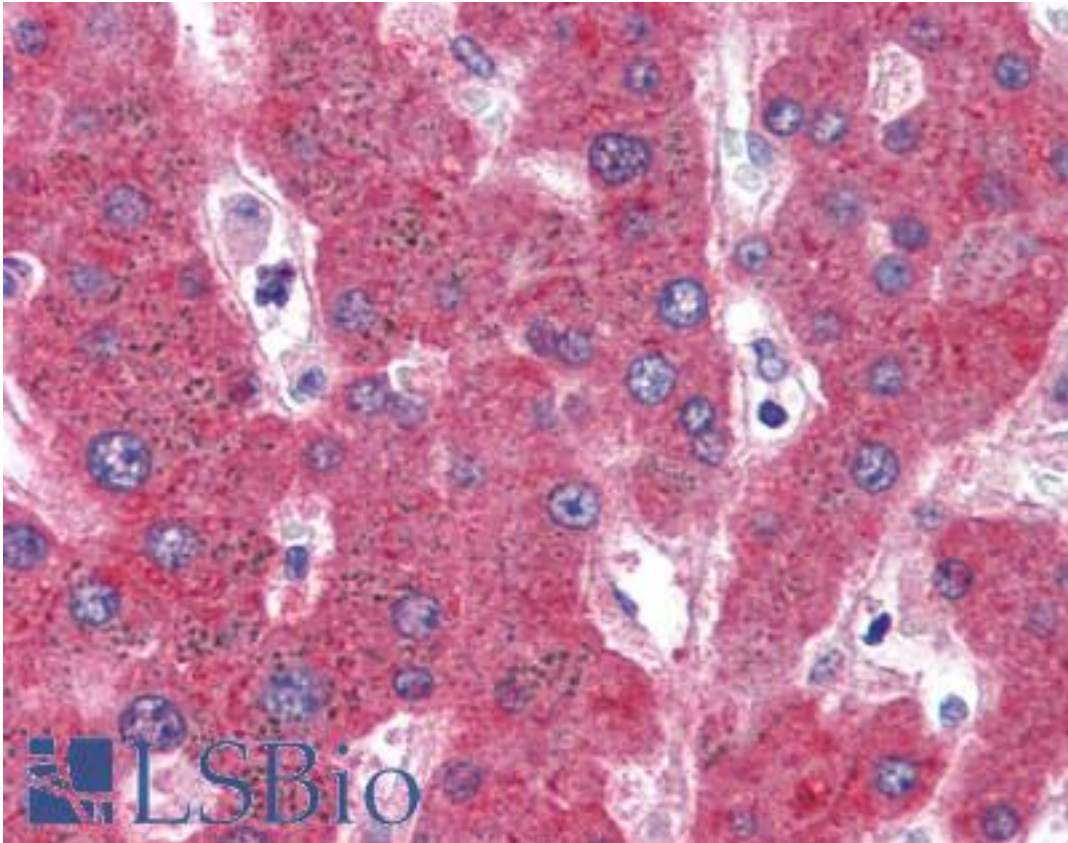


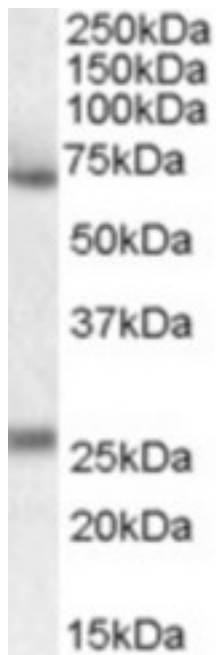
SERPINF2 / Alpha-2-Antiplasmin Goat anti-Human Polyclonal (Internal) Antibody - LS-B2768 - LSBio	
<b>CatalogID:</b>	LS-B2768
<b>Validation:</b>	This antibody replaces catalog number LS-C54499. It has been validated for use in the following assays: IHC-P.
<b>Target:</b>	serpin peptidase inhibitor, clade F (alpha-2 antiplasmin, pigment epithelium derived factor), member 2 (SERPINF2)
<b>Synonyms:</b>	SERPINF2 Antibody, AAP Antibody, Alpha-2-plasmin inhibitor Antibody, Alpha-2-AP Antibody, Alpha-2-antiplasmin Antibody, A2AP Antibody, ALPHA-2-PI Antibody, Serpin F2 Antibody, PLI Antibody, API Antibody
<b>Host</b>	SERPINF2 antibody was produced in Goat
<b>Clonality:</b>	Polyclonal
<b>Immunogen Species:</b>	SERPINF2 / Alpha-2-Antiplasmin antibody was raised against Human
<b>Antigen Type:</b>	Synthetic peptide
<b>Immunogen:</b>	SERPINF2 / Alpha-2-Antiplasmin antibody was raised against synthetic peptide C-KDFLQSLKGFPRGDK from an internal region of human SERPINF2 / Alpha-2-Antiplasmin (NP_000925.2; NP_001159393.1). Percent identity by BLAST analysis: Human, Gorilla (100%); Gibbon (93%); Horse (87%); Monkey (80%).
<b>Specificity:</b>	Human SERPINF2 / Alpha-2-Antiplasmin. This antibody is expected to recognise both reported isoforms (NP_000925.2; NP_001159393.1). Reported variants represent identical protein (NP_000925.2; NP_001159392.1).
<b>Epitope:</b>	Internal
<b>Reactivity:</b>	Human, Gorilla
<b>Predicted Reactivity:</b>	Gibbon
<b>Purification:</b>	Immunoaffinity purified
<b>Presentation:</b>	Tris-buffered saline, pH 7.3, 0.5% BSA, 0.02% sodium azide
<b>Recommended Storage:</b>	Store at -20°C. Minimize freezing and thawing.
<b>Usage Summary:</b>	Immunohistochemistry: LS-B2768 was validated for use in immunohistochemistry on a panel of 21 formalin-fixed, paraffin-embedded (FFPE) human tissues after heat induced antigen retrieval in pH 6.0 citrate buffer. After incubation with the primary antibody, slides were incubated with biotinylated secondary antibody, followed by alkaline phosphatase-streptavidin and chromogen. The stained slides were evaluated by a pathologist to confirm staining specificity. The optimal working concentration for LS-B2768 was determined to be 3.75 ug/ml.
<b>Uses:</b>	IHC - Paraffin (3.75 µg/ml), Western blot (0.3 - 1 µg/ml), ELISA (1:16000) (Optimal dilution to be determined by the researcher)
<b>Size:</b>	50 µg
<b>Concentration:</b>	0.5 mg/ml

**Immunohistochemistry Image:**



Anti-SERPINF2 / Alpha-2-Antiplasmin antibody IHC of human liver. Immunohistochemistry of formalin-fixed, paraffin-embedded tissue after heat-induced antigen retrieval. Antibody LS-B2768 concentration 75 ug/ml.

**Western Blot Image:**



Antibody (0.1 ug/ml) staining of Human Duodenum lysate (35 ug protein in RIPA buffer).  
Primary incubation was 1 hour. Detected by chemiluminescence.

**Requested From:**

Japan

Laboratory Reagent For In Vitro Research Use Only

Not for resale without prior written consent from LifeSpan BioSciences, Inc.

Created on 9/23/2014

© 2014 LifeSpan BioSciences