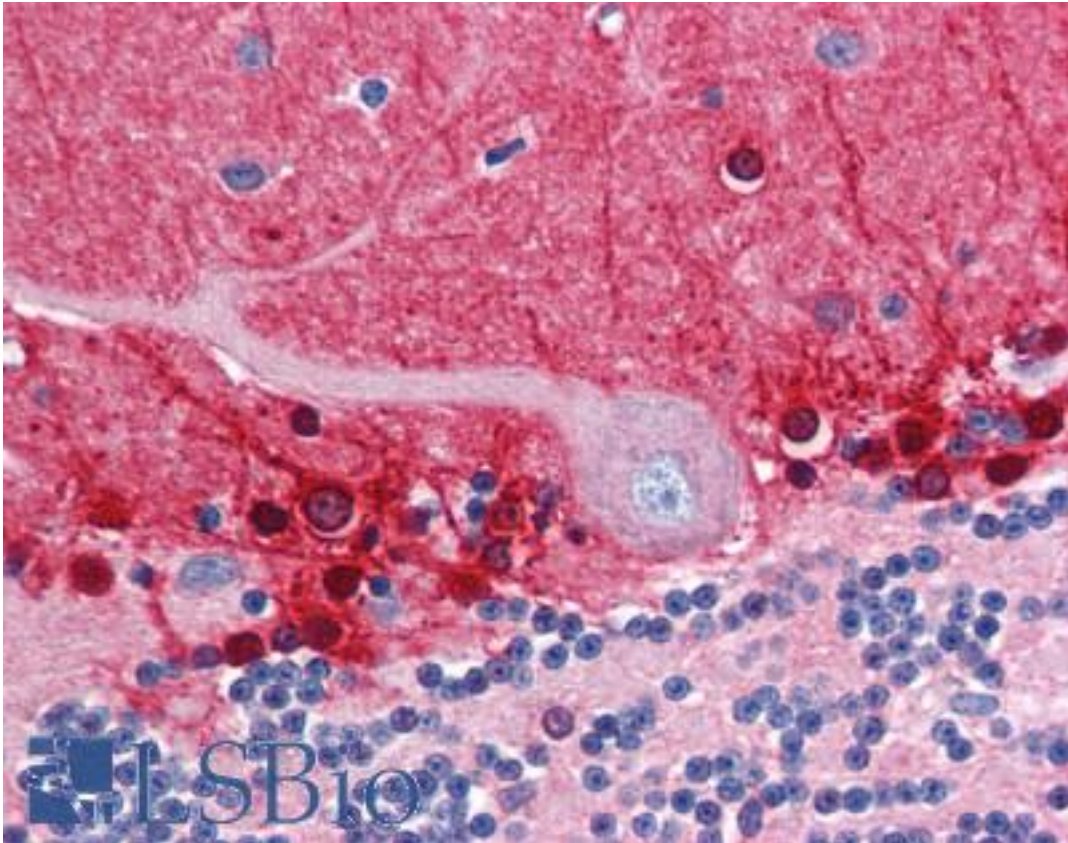


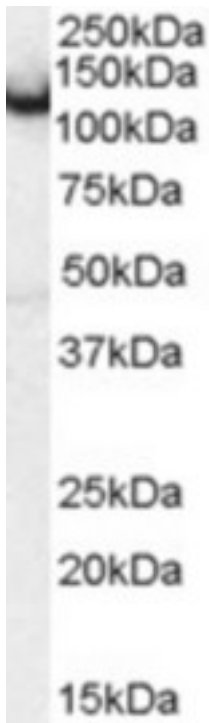
AMPH / Amphiphysin Goat anti-Human Polyclonal (Internal) Antibody - LS-B2760 - LSBio	
CatalogID:	LS-B2760
Validation:	This antibody replaces catalog number LS-C34668. It has been validated for use in the following assays: IHC-P.
Target:	amphiphysin
Synonyms:	AMPH Antibody, AMPH1 Antibody, Amphiphysin Antibody, Amphiphysin I Antibody
Host	AMPH antibody was produced in Goat
Clonality:	Polyclonal
Immunogen Species:	AMPH / Amphiphysin antibody was raised against Human
Antigen Type:	Synthetic peptide
Immunogen:	AMPH / Amphiphysin antibody was raised against synthetic peptide C-KRKDESRISKAE from an internal region of human AMPH / Amphiphysin (NP_001626.1; NP_647477.1). Percent identity by BLAST analysis: Human, Gorilla, Gibbon, Monkey, Marmoset, Mouse, Rat, Hamster, Elephant, Panda, Bovine, Dog, Bat, Horse, Rabbit (100%); Xenopus (92%); Opossum, Chicken, Lizard (83%).
Specificity:	Human AMPH / Amphiphysin. This antibody is expected to recognise both reported isoforms (NP_001626.1 and NP_647477.1).
Epitope:	Internal
Reactivity:	Human, Gorilla, Gibbon, Monkey, Mouse, Rat, Bat, Bovine, Dog, Hamster, Horse, Rabbit
Predicted Reactivity:	Xenopus
Purification:	Immunoaffinity purified
Presentation:	Tris-buffered saline, pH 7.3, 0.5% BSA, 0.02% sodium azide
Recommended Storage:	Store at -20°C. Minimize freezing and thawing.
Usage Summary:	Immunohistochemistry: LS-B2760 was validated for use in immunohistochemistry on a panel of 21 formalin-fixed, paraffin-embedded (FFPE) human tissues after heat induced antigen retrieval in pH 6.0 citrate buffer. After incubation with the primary antibody, slides were incubated with biotinylated secondary antibody, followed by alkaline phosphatase-streptavidin and chromogen. The stained slides were evaluated by a pathologist to confirm staining specificity. The optimal working concentration for LS-B2760 was determined to be 2.5 µg/ml.
Uses:	IHC - Paraffin (2.5 µg/ml), Western blot (0.1 - 0.5 µg/ml), ELISA (1:16000) (Optimal dilution to be determined by the researcher)
Size:	50 µg
Concentration:	0.5 mg/ml

Immunohistochemistry Image:



Anti-AMPH / Amphiphysin antibody IHC of human brain, cerebellum. Immunohistochemistry of formalin-fixed, paraffin-embedded tissue after heat-induced antigen retrieval. Antibody LS-B2760 concentration 5 ug/ml.

Western Blot Image:



Antibody (0.5 ug/ml) staining of mouse brain lysate (35 ug protein in RIPA buffer). Primary incubation was 1 hour. Detected by chemiluminescence.

Requested From:

Japan

Laboratory Reagent For In Vitro Research Use Only

Not for resale without prior written consent from LifeSpan BioSciences, Inc.

Created on 9/23/2014

© 2014 LifeSpan BioSciences