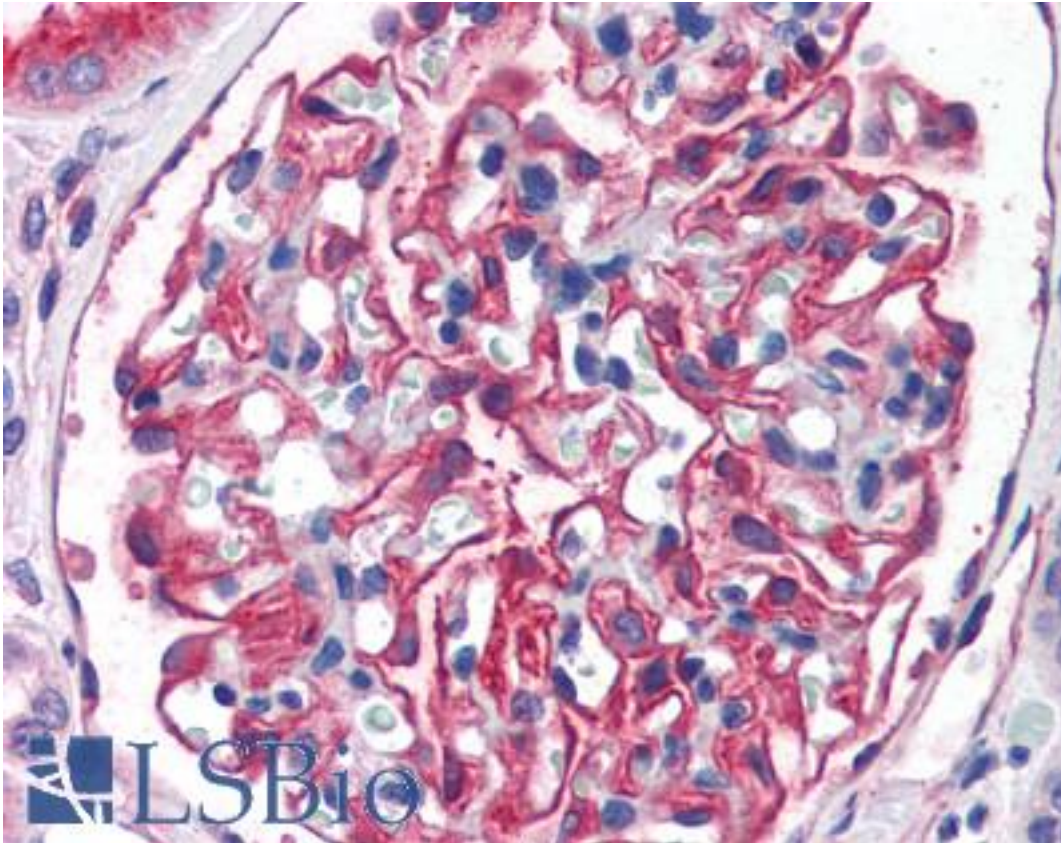


ENPEP / Aminopeptidase A Goat anti-Human Polyclonal (Internal) Antibody - LS-B2758 - LSBio	
<b>CatalogID:</b>	LS-B2758
<b>Validation:</b>	This antibody replaces catalog number LS-C54505. It has been validated for use in the following assays: IHC-P.
<b>Target:</b>	glutamyl aminopeptidase (aminopeptidase A) (ENPEP)
<b>Synonyms:</b>	ENPEP Antibody, APA Antibody, Aminopeptidase A Antibody, AP-A Antibody, CD249 antigen Antibody, Differentiation antigen gp160 Antibody, EAP Antibody, Glutamyl aminopeptidase Antibody, gp160 Antibody, CD249 Antibody
<b>Family / Subfamily:</b>	Exopeptidase / Metallopeptidase M1
<b>Host</b>	ENPEP antibody was produced in Goat
<b>Clonality:</b>	Polyclonal
<b>Immunogen Species:</b>	ENPEP / Aminopeptidase A antibody was raised against Human
<b>Antigen Type:</b>	Synthetic peptide
<b>Immunogen:</b>	ENPEP / Aminopeptidase A antibody was raised against synthetic peptide C-EQYQKTSLAQEKEK from an internal region of human ENPEP (NP_001968.3). Percent identity by BLAST analysis: Human, Gorilla, Orangutan, Gibbon, Monkey, Marmoset, Mouse, Rat, Elephant, Bovine (100%); Dog (93%); Panda, Bat, Rabbit, Horse, Pig (86%).
<b>Specificity:</b>	Human ENPEP.
<b>Epitope:</b>	Internal
<b>Reactivity:</b>	Human, Gorilla, Orangutan, Gibbon, Monkey, Mouse, Rat, Bovine
<b>Predicted Reactivity:</b>	Dog
<b>Purification:</b>	Immunoaffinity purified
<b>Presentation:</b>	Tris-buffered saline, pH 7.3, 0.5% BSA, 0.02% sodium azide
<b>Recommended Storage:</b>	Store at -20°C. Minimize freezing and thawing.
<b>Usage Summary:</b>	Immunohistochemistry: LS-B2758 was validated for use in immunohistochemistry on a panel of 21 formalin-fixed, paraffin-embedded (FFPE) human tissues after heat induced antigen retrieval in pH 6.0 citrate buffer. After incubation with the primary antibody, slides were incubated with biotinylated secondary antibody, followed by alkaline phosphatase-streptavidin and chromogen. The stained slides were evaluated by a pathologist to confirm staining specificity. The optimal working concentration for LS-B2758 was determined to be 3.75 ug/ml.
<b>Uses:</b>	IHC - Paraffin (3.75 µg/ml), Western blot (1 - 3 µg/ml), ELISA (1:64000) (Optimal dilution to be determined by the researcher)
<b>Size:</b>	50 µg
<b>Concentration:</b>	0.5 mg/ml

**Immunohistochemistry Image:**



Anti-ENPEP antibody IHC of human kidney. Immunohistochemistry of formalin-fixed, paraffin-embedded tissue after heat-induced antigen retrieval. Antibody LS-B2758 concentration 75 ug/ml.

**Western Blot Image:**



Antibody staining (1 ug/ml) of human testis lysate (RIPA buffer, 30 ug total protein per lane). Primary incubated for 1 hour. Detected by Western blot of chemiluminescence.

<b>Requested From:</b>	Japan
Laboratory Reagent For In Vitro Research Use Only	
Not for resale without prior written consent from LifeSpan BioSciences, Inc.	
Created on 9/23/2014	
© 2014 LifeSpan BioSciences	