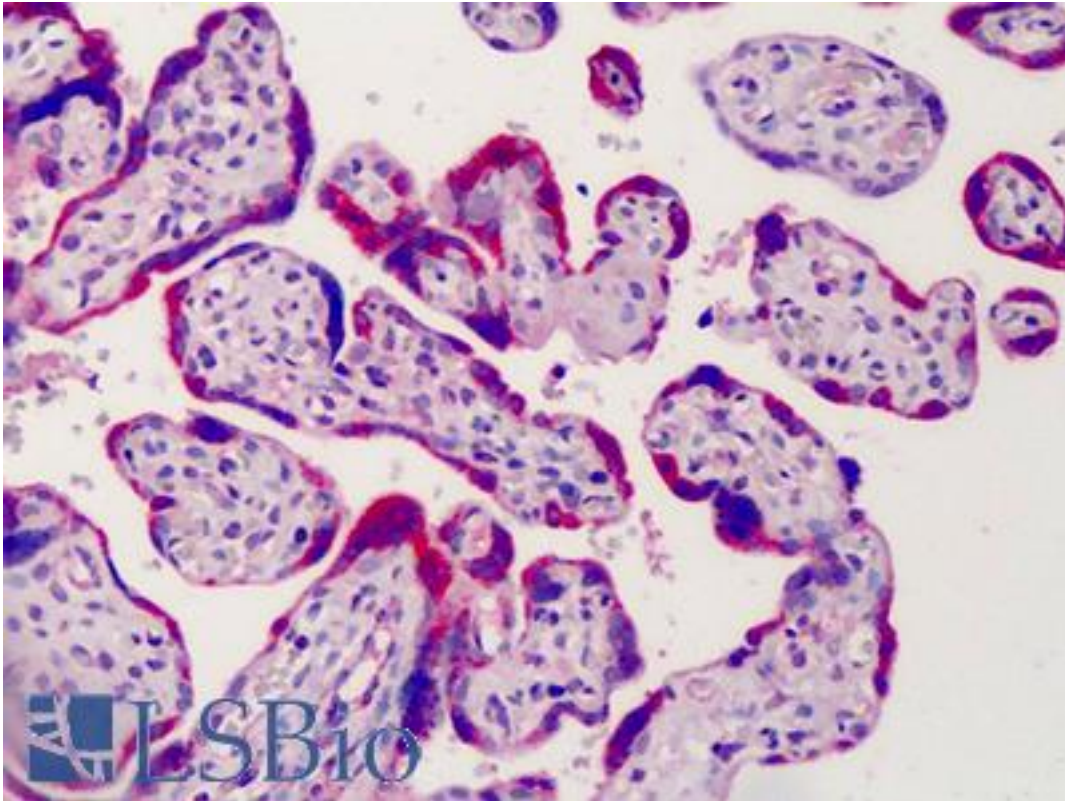


ADAM12 Goat anti-Human Polyclonal (N-Terminus) Antibody - LS-B2756 - LSBio	
<b>CatalogID:</b>	LS-B2756
<b>Validation:</b>	This antibody replaces catalog number LS-C34659. It has been validated for use in the following assays: IHC-P.
<b>Target:</b>	ADAM metallopeptidase domain 12 (ADAM12)
<b>Synonyms:</b>	ADAM12 Antibody, ADAM 12 Antibody, MCMPMItna Antibody, MCMP Antibody, MLTN Antibody, Meltrin-alpha Antibody, MLTNA Antibody
<b>Family / Subfamily:</b>	Protease / Metallopeptidase M12B
<b>Host</b>	ADAM12 antibody was produced in Goat
<b>Clonality:</b>	Polyclonal
<b>Immunogen Species:</b>	ADAM12 antibody was raised against Human
<b>Antigen Type:</b>	Synthetic peptide
<b>Immunogen:</b>	ADAM12 antibody was raised against synthetic peptide AARPLPVSPARALC from the N-terminus of human ADAM12 (NP_003465.3; NP_067673.2). Percent identity with other species by BLAST analysis: Human (100%), Gorilla (92%), Monkey (85%).
<b>Specificity:</b>	Human ADAM12. This antibody is expected to recognise both the longer membrane-bound form of human ADAM12 (NP_003465.3) and the shorter soluble ADAM12 splice isoform (NP_067673.2). This antibody does not cross-react with other ADAMS.
<b>Epitope:</b>	N-Terminus
<b>Reactivity:</b>	Human
<b>Predicted Reactivity:</b>	Gorilla
<b>Purification:</b>	Immunoaffinity purified
<b>Presentation:</b>	Tris-buffered saline, pH 7.3, 0.5% BSA, 0.02% sodium azide
<b>Recommended Storage:</b>	Store at -20°C. Minimize freezing and thawing.
<b>Usage Summary:</b>	Immunohistochemistry: LS-B2756 was validated for use in immunohistochemistry on a panel of 21 formalin-fixed, paraffin-embedded (FFPE) human tissues after heat induced antigen retrieval in pH 6.0 citrate buffer. After incubation with the primary antibody, slides were incubated with biotinylated secondary antibody, followed by alkaline phosphatase-streptavidin and chromogen. The stained slides were evaluated by a pathologist to confirm staining specificity. The optimal working concentration for LS-B2756 was determined to be 3.75 ug/ml.
<b>Uses:</b>	IHC - Paraffin (3.75 µg/ml), Western blot (0.1 - 0.3 µg/ml), ELISA (1:64000) (Optimal dilution to be determined by the researcher)
<b>Size:</b>	50 µg
<b>Concentration:</b>	0.5 mg/ml

**Immunohistochemistry Image:**



Anti-ADAM12 antibody IHC of human placenta. Immunohistochemistry of formalin-fixed, paraffin-embedded tissue after heat-induced antigen retrieval. Antibody LS-B2756 concentration 3.75 ug/ml.

**Western Blot Image:**



Antibody staining (0.1 ug/ml) of human heart lysate (RIPA buffer, 30 ug total protein per lane). Primary incubated for 1 hour. Detected by Western blot of chemiluminescence.

<b>Requested From:</b>	Japan
Laboratory Reagent For In Vitro Research Use Only	
Not for resale without prior written consent from LifeSpan BioSciences, Inc.	
Created on 9/23/2014	
© 2014 LifeSpan BioSciences	