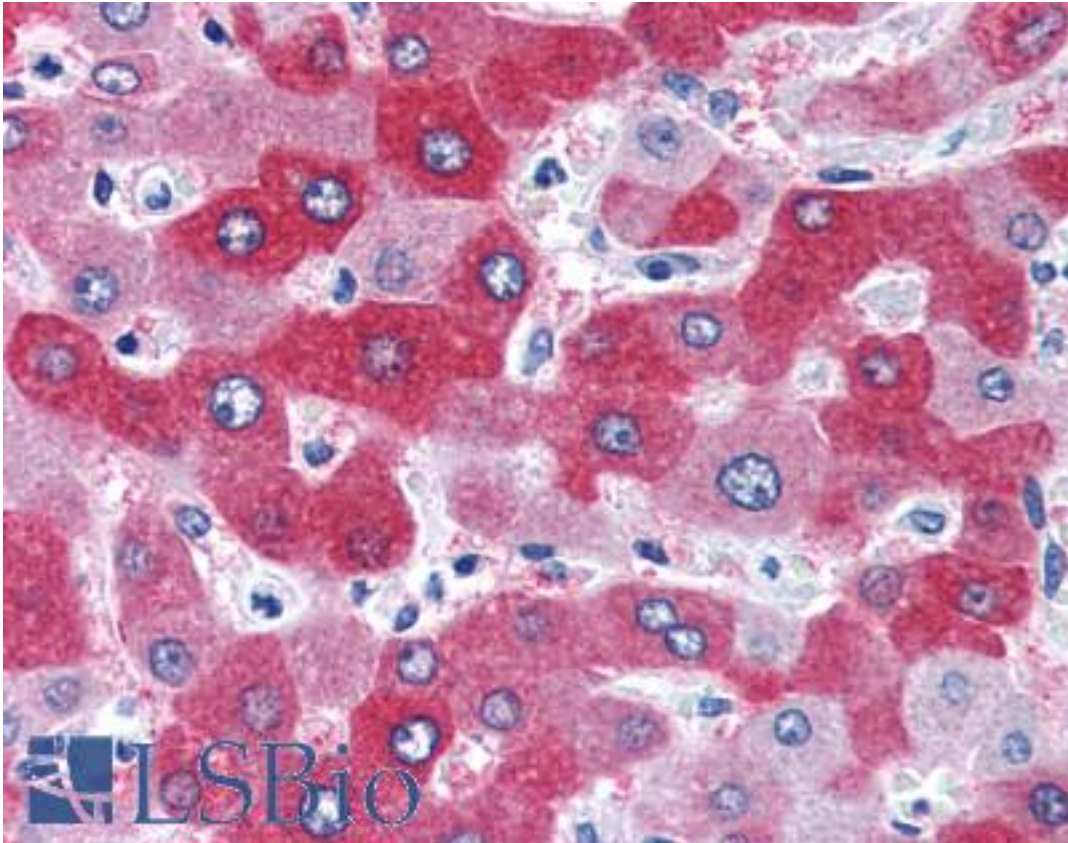


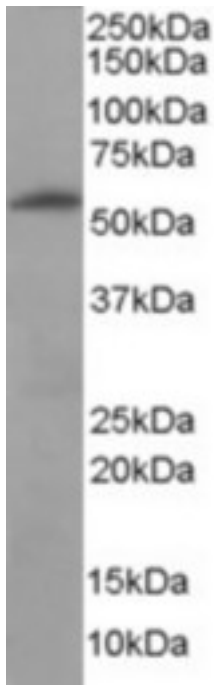
58K Golgi Protein / FTCD Goat anti-Human Polyclonal (Internal) Antibody - LS-B2755 - LSBio	
<b>CatalogID:</b>	LS-B2755
<b>Validation:</b>	This antibody replaces catalog number LS-C20119. It has been validated for use in the following assays: IHC-P.
<b>Target:</b>	formimidoyltransferase cyclodeaminase (FTCD)
<b>Synonyms:</b>	FTCD Antibody, 58K Golgi Protein Antibody, LCHC1 Antibody
<b>Host</b>	FTCD antibody was produced in Goat
<b>Clonality:</b>	Polyclonal
<b>Immunogen Species:</b>	58K Golgi Protein / FTCD antibody was raised against Human
<b>Antigen Type:</b>	Synthetic peptide
<b>Immunogen:</b>	58K Golgi Protein / FTCD antibody was raised against synthetic peptide C-LREQGRGKDQPGRL from an internal region of human FTCD (NP_006648.1; NP_996848.1). Percent identity by BLAST analysis: Human, Gorilla, Gibbon, Mouse, Rat, Hamster, Bovine, Bat, Pig (100%); Elephant, Platypus (93%); Monkey, Panda, Rabbit, Horse, Lizard, Xenopus, Frog, Stickleback (86%).
<b>Specificity:</b>	Human FTCD. Variants (NP_006648.1; NP_996848.1) encode the same protein.
<b>Epitope:</b>	Internal
<b>Reactivity:</b>	Human, Gorilla, Gibbon, Mouse, Rat, Bat, Bovine, Hamster, Pig
<b>Purification:</b>	Immunoaffinity purified
<b>Presentation:</b>	Tris-buffered saline, pH 7.3, 0.5% BSA, 0.02% sodium azide
<b>Recommended Storage:</b>	Store at -20°C. Minimize freezing and thawing.
<b>Usage Summary:</b>	Immunohistochemistry: LS-B2755 was validated for use in immunohistochemistry on a panel of 21 formalin-fixed, paraffin-embedded (FFPE) human tissues after heat induced antigen retrieval in pH 6.0 citrate buffer. After incubation with the primary antibody, slides were incubated with biotinylated secondary antibody, followed by alkaline phosphatase-streptavidin and chromogen. The stained slides were evaluated by a pathologist to confirm staining specificity. The optimal working concentration for LS-B2755 was determined to be 3.75 ug/ml.
<b>Uses:</b>	IHC - Paraffin (3.75 µg/ml), Western blot (0.03 - 0.1 µg/ml), ELISA (1:32000) (Optimal dilution to be determined by the researcher)
<b>Size:</b>	50 µg
<b>Concentration:</b>	0.5 mg/ml

**Immunohistochemistry Image:**



Anti-FTCD antibody IHC of human liver. Immunohistochemistry of formalin-fixed, paraffin-embedded tissue after heat-induced antigen retrieval. Antibody LS-B2755 concentration 75 ug/ml.

**Western Blot Image:**



Staining (0.03 ug/ml) of Human Liver lysate (RIPA buffer, 35 ug total protein per lane).  
Primary incubated for 1 hour. Detected by chemiluminescence.

**Requested From:**

Japan

Laboratory Reagent For In Vitro Research Use Only

Not for resale without prior written consent from LifeSpan BioSciences, Inc.

Created on 9/23/2014

© 2014 LifeSpan BioSciences