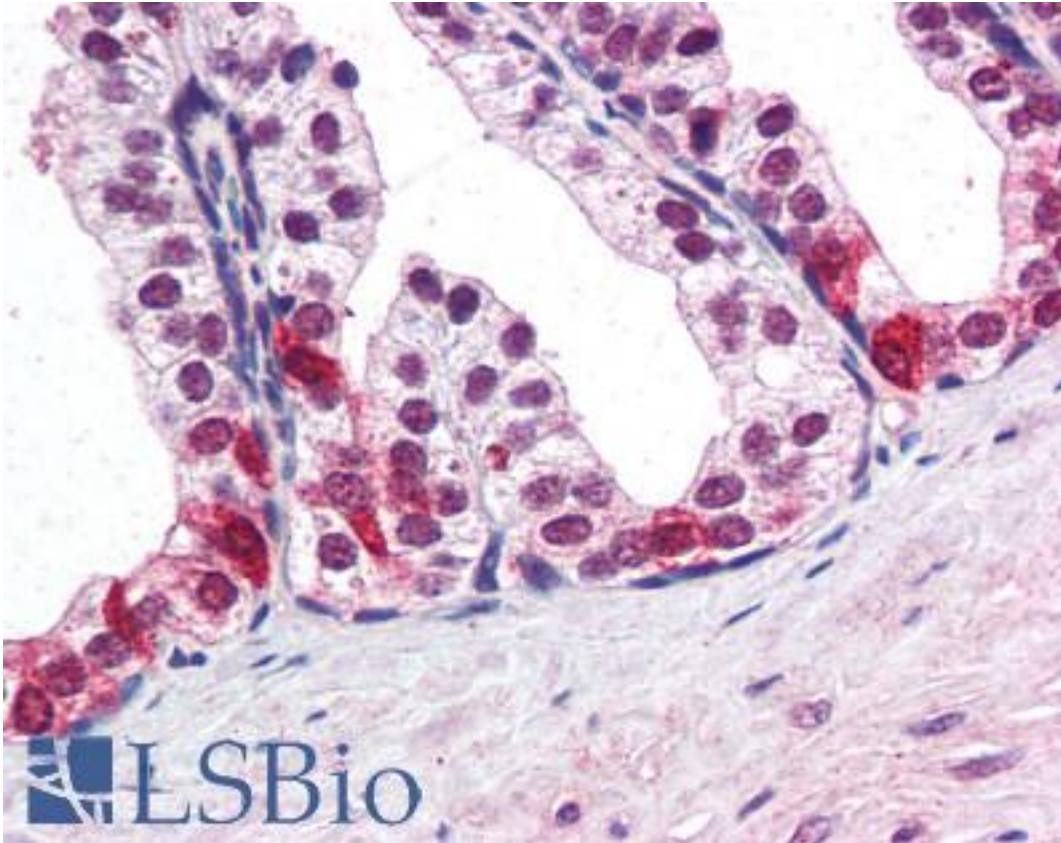


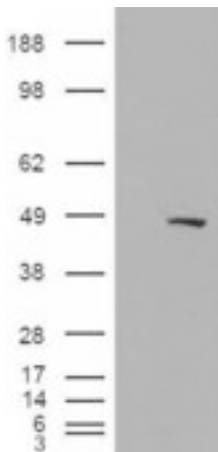
SMARCE1 / BAF57 Goat anti-Human Polyclonal (C-Terminus) Antibody - LS-B2752 - LSBio	
CatalogID:	LS-B2752
Validation:	This antibody replaces catalog number LS-C54564. It has been validated for use in the following assays: IHC-P.
Target:	SWI/SNF related, matrix associated, actin dependent regulator of chromatin, subfamily e, member 1 (SMARCE1)
Synonyms:	SMARCE1 Antibody, BRG1-associated factor 57 Antibody, BAF57 Antibody
Host	SMARCE1 antibody was produced in Goat
Clonality:	Polyclonal
Immunogen Species:	SMARCE1 / BAF57 antibody was raised against Human
Antigen Type:	Synthetic peptide
Immunogen:	SMARCE1 / BAF57 antibody was raised against synthetic peptide C-PPTDPIPEDEKKE from the C-terminus of human SMARCE1 (NP_003070.3). Percent identity by BLAST analysis: Human, Gorilla, Orangutan, Gibbon, Monkey, Marmoset, Bat, Horse (100%); Mouse, Rat, Elephant, Panda, Dog (92%).
Specificity:	Human SMARCE1.
Epitope:	C-Terminus
Reactivity:	Human, Gorilla, Orangutan, Gibbon, Monkey, Bat, Horse
Predicted Reactivity:	Mouse, Rat, Dog
Purification:	Immunoaffinity purified
Presentation:	Tris-buffered saline, pH 7.3, 0.5% BSA, 0.02% sodium azide
Recommended Storage:	Store at -20°C. Minimize freezing and thawing.
Usage Summary:	Immunohistochemistry: LS-B2752 was validated for use in immunohistochemistry on a panel of 21 formalin-fixed, paraffin-embedded (FFPE) human tissues after heat induced antigen retrieval in pH 6.0 citrate buffer. After incubation with the primary antibody, slides were incubated with biotinylated secondary antibody, followed by alkaline phosphatase-streptavidin and chromogen. The stained slides were evaluated by a pathologist to confirm staining specificity. The optimal working concentration for LS-B2752 was determined to be 3.75 ug/ml.
Uses:	IHC - Paraffin (3.75 µg/ml), Western blot (0.2 - 0.6 µg/ml), ELISA (1:16000) (Optimal dilution to be determined by the researcher)
Size:	50 µg
Concentration:	0.5 mg/ml

Immunohistochemistry Image:



Anti-SMARCE1 antibody IHC of human prostate. Immunohistochemistry of formalin-fixed, paraffin-embedded tissue after heat-induced antigen retrieval. Antibody LS-B2752 concentration 75 ug/ml.

Western Blot Image:



HEK293 overexpressing BAF57 (RC209444) and probed with the antibody (mock transfection in first lane).

Western Blot Image:



Antibody staining (0.2 ug/ml) of Jurkat lysate (RIPA buffer, 35 ug total protein per lane).
Primary incubated for 1 hour. Detected by Western blot of chemiluminescence.

Requested From:

Japan

Laboratory Reagent For In Vitro Research Use Only

Not for resale without prior written consent from LifeSpan BioSciences, Inc.

Created on 9/23/2014

© 2014 LifeSpan BioSciences