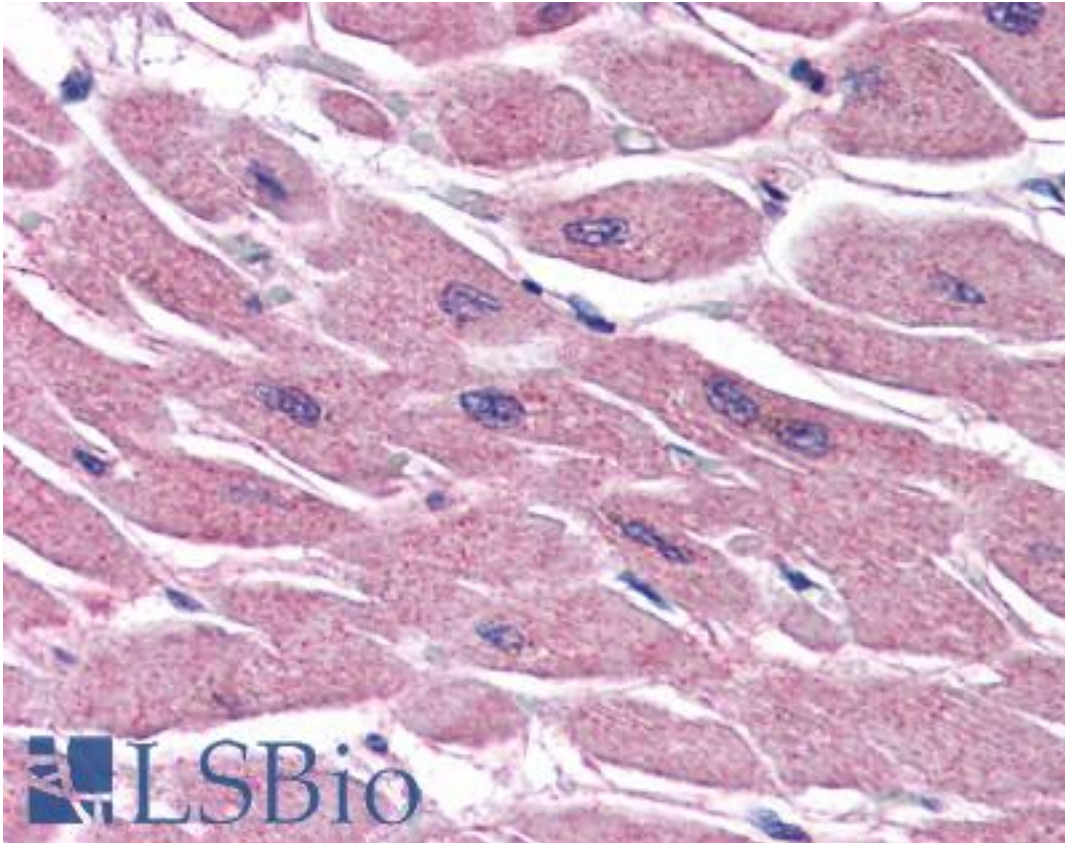


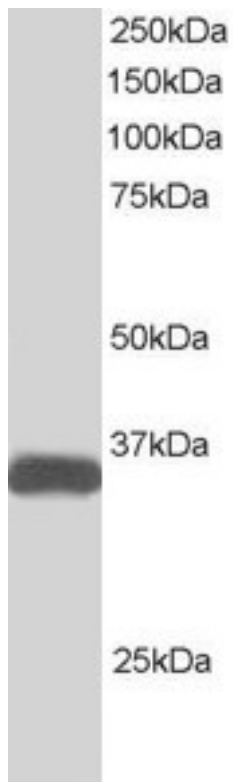
STRADB / ALS2CR2 Goat anti-Human Polyclonal (C-Terminus) Antibody - LS-B2747 - LSBio	
CatalogID:	LS-B2747
Validation:	This antibody replaces catalog number LS-C54501. It has been validated for use in the following assays: IHC-P.
Target:	STE20-related kinase adaptor beta (STRADB)
Synonyms:	STRADB Antibody, ALS2CR2 Antibody, CALS-21 Antibody, ILP-interacting protein ILPIPA Antibody, ILPIP Antibody, ILP-interacting protein Antibody, PAPK Antibody, Pseudokinase ALS2CR2 Antibody, PRO1038 Antibody, ILPIPA Antibody, STRAD beta Antibody
Family / Subfamily:	Protein Kinase / STLK
Host	STRADB antibody was produced in Goat
Clonality:	Polyclonal
Immunogen Species:	STRADB / ALS2CR2 antibody was raised against Human
Antigen Type:	Synthetic peptide
Immunogen:	STRADB / ALS2CR2 antibody was raised against synthetic peptide CDFPDEKDSYWEF from the C-terminus of human STRADB (NP_061041.2; AAF71042.1). Percent identity by BLAST analysis: Human, Gorilla, Gibbon, Monkey (100%); Marmoset, Bovine, Dog (92%); Panda, Rabbit, Pig (85%).
Specificity:	Human STRADB. This is expected to recognise both human isoforms: ILPIP-alpha (NP_061041.2) and ILPIP-beta (AAF71042.1).
Epitope:	C-Terminus
Reactivity:	Human, Gorilla, Gibbon
Predicted Reactivity:	Monkey, Bovine, Dog
Purification:	Immunoaffinity purified
Presentation:	Tris-buffered saline, pH 7.3, 0.5% BSA, 0.02% sodium azide
Recommended Storage:	Store at -20°C. Minimize freezing and thawing.
Usage Summary:	Immunohistochemistry: LS-B2747 was validated for use in immunohistochemistry on a panel of 21 formalin-fixed, paraffin-embedded (FFPE) human tissues after heat induced antigen retrieval in pH 6.0 citrate buffer. After incubation with the primary antibody, slides were incubated with biotinylated secondary antibody, followed by alkaline phosphatase-streptavidin and chromogen. The stained slides were evaluated by a pathologist to confirm staining specificity. The optimal working concentration for LS-B2747 was determined to be 3.75 ug/ml.
Uses:	IHC - Paraffin (3.75 µg/ml), Western blot (1 - 3 µg/ml), ELISA (1:32000) (Optimal dilution to be determined by the researcher)
Size:	50 µg
Concentration:	0.5 mg/ml

Immunohistochemistry Image:



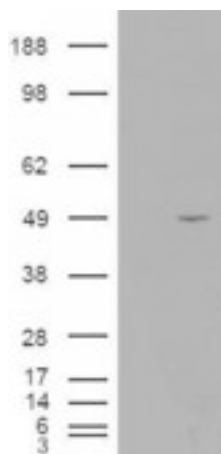
Anti-STRADB antibody IHC of human heart. Immunohistochemistry of formalin-fixed, paraffin-embedded tissue after heat-induced antigen retrieval. Antibody LS-B2747 concentration 75 ug/ml.

Western Blot Image:



Antibody staining (1 ug/ml) of Human Heart lysate (RIPA buffer, 30 ug total protein per lane). Primary incubated for 1 hour. Detected by Western blot of chemiluminescence.

Western Blot Image:



HEK293 overexpressing ILPIP (RC203432) and probed with the antibody (mock transfection in first lane).

Requested From:

Japan

Laboratory Reagent For In Vitro Research Use Only

Not for resale without prior written consent from LifeSpan BioSciences, Inc.

Created on 9/23/2014

© 2014 LifeSpan BioSciences