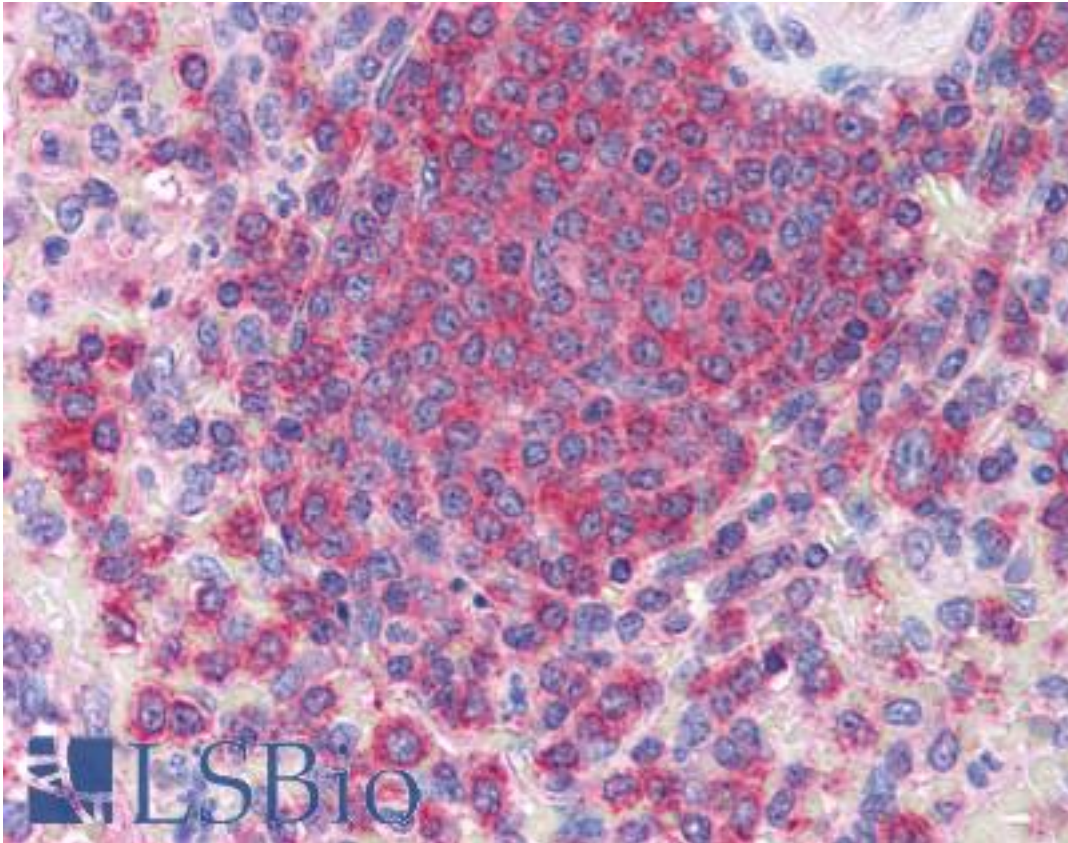


**ARPC2 / p34-Arc Goat anti-Human Polyclonal (C-Terminus) Antibody - LS-B2742 - LSBio**

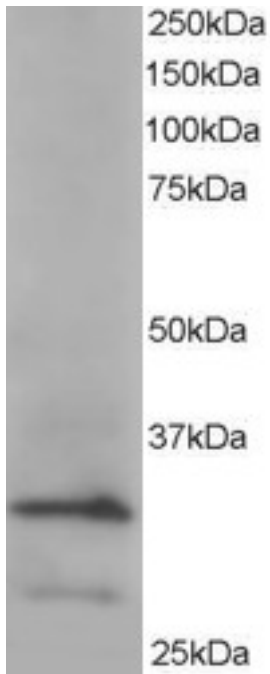
<b>CatalogID:</b>	LS-B2742
<b>Validation:</b>	This antibody replaces catalog number LS-C20126. It has been validated for use in the following assays: IHC-P.
<b>Target:</b>	actin related protein 2/3 complex, subunit 2, 34kDa (ARPC2)
<b>Synonyms:</b>	ARPC2 Antibody, Arp2/3 complex 34 kDa subunit Antibody, p34-Arc Antibody, PNAS-139 Antibody, PRO2446 Antibody, ARC34 Antibody
<b>Family / Subfamily:</b>	Cytoskeleton
<b>Host</b>	ARPC2 antibody was produced in Goat
<b>Clonality:</b>	Polyclonal
<b>Immunogen Species:</b>	ARPC2 / p34-Arc antibody was raised against Human
<b>Antigen Type:</b>	Synthetic peptide
<b>Immunogen:</b>	ARPC2 / p34-Arc antibody was raised against synthetic peptide C-EMKTITGKTFSSR from the C-terminus of human ARPC2 (NP_005722.1; NP_690601.1). Percent identity by BLAST analysis: Human, Gorilla, Orangutan, Gibbon, Monkey, Marmoset, Mouse, Rat, Hamster, Elephant, Dog, Bovine, Rabbit, Opossum, Platypus (100%); Horse, Lizard (92%); Turkey, Chicken, Xenopus (85%).
<b>Specificity:</b>	Human ARPC2. The reported variants NP_005722.1 and NP_690601.1 represent identical protein.
<b>Epitope:</b>	C-Terminus
<b>Reactivity:</b>	Human, Gorilla, Orangutan, Gibbon, Monkey, Mouse, Rat, Bovine, Dog, Hamster, Rabbit
<b>Predicted Reactivity:</b>	Horse
<b>Purification:</b>	Immunoaffinity purified
<b>Presentation:</b>	Tris-buffered saline, pH 7.3, 0.5% BSA, 0.02% sodium azide
<b>Recommended Storage:</b>	Store at -20°C. Minimize freezing and thawing.
<b>Usage Summary:</b>	Immunohistochemistry: LS-B2742 was validated for use in immunohistochemistry on a panel of 21 formalin-fixed, paraffin-embedded (FFPE) human tissues after heat induced antigen retrieval in pH 6.0 citrate buffer. After incubation with the primary antibody, slides were incubated with biotinylated secondary antibody, followed by alkaline phosphatase-streptavidin and chromogen. The stained slides were evaluated by a pathologist to confirm staining specificity. The optimal working concentration for LS-B2742 was determined to be 3.75 ug/ml.
<b>Uses:</b>	IHC - Paraffin (3.75 µg/ml), Western blot (0.1 - 0.5 µg/ml), ELISA (1:32000) (Optimal dilution to be determined by the researcher)
<b>Size:</b>	50 µg
<b>Concentration:</b>	0.5 mg/ml

**Immunohistochemistry Image:**



Anti-ARPC2 antibody IHC of human spleen. Immunohistochemistry of formalin-fixed, paraffin-embedded tissue after heat-induced antigen retrieval. Antibody LS-B2742 concentration 75 ug/ml.

**Western Blot Image:**



Staining (0.2 ug/ml) of HeLa lysate (RIPA buffer, 35 ug total protein per lane). Primary incubated for 1 hour. Detected by chemiluminescence.

**Requested From:**

Japan

Laboratory Reagent For In Vitro Research Use Only

Not for resale without prior written consent from LifeSpan BioSciences, Inc.

Created on 9/23/2014

© 2014 LifeSpan BioSciences