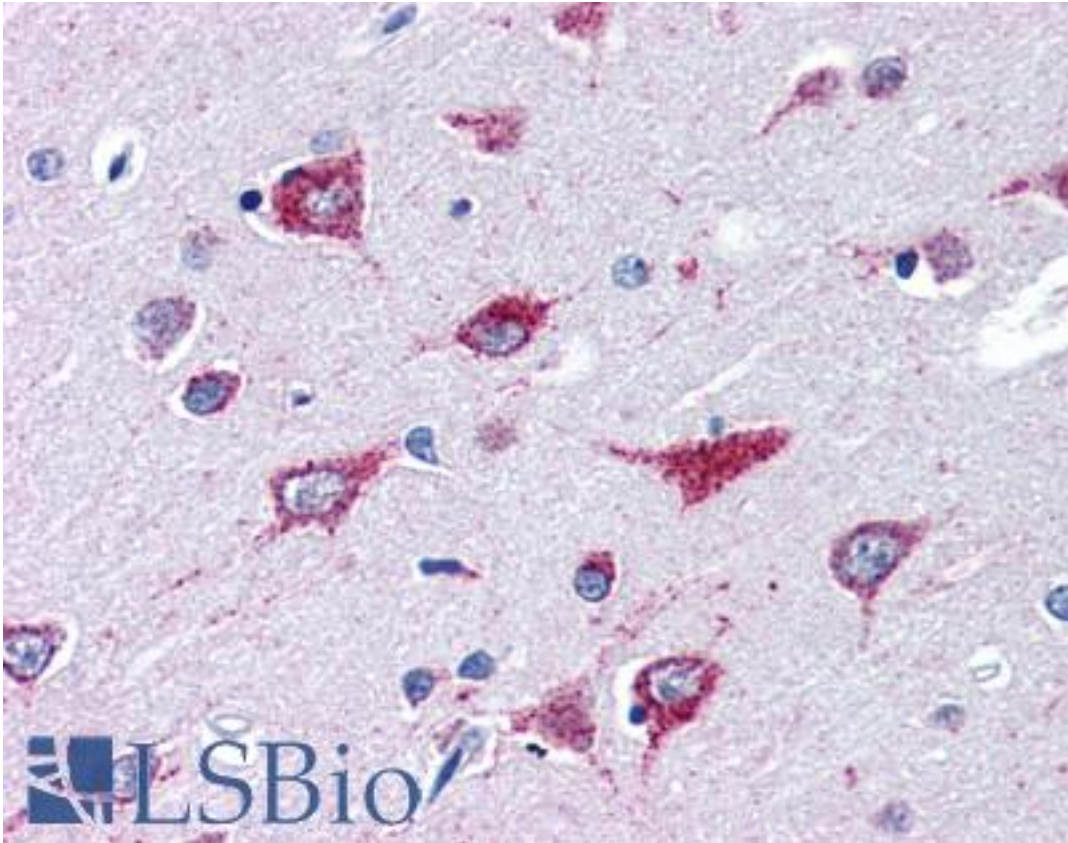


ALS2 / Alsin Goat anti-Human Polyclonal (C-Terminus) Antibody - LS-B2740 - LSBio

<b>CatalogID:</b>	LS-B2740
<b>Validation:</b>	This antibody replaces catalog number LS-C54503. It has been validated for use in the following assays: IHC-P.
<b>Target:</b>	amyotrophic lateral sclerosis 2 (juvenile) (ALS2)
<b>Synonyms:</b>	ALS2 Antibody, ALS2CR6 Antibody, ALSJ Antibody, IAHSP Antibody, Alsin Antibody, PLSJ Antibody, KIAA1563 Antibody
<b>Host</b>	ALS2 antibody was produced in Goat
<b>Clonality:</b>	Polyclonal
<b>Immunogen Species:</b>	ALS2 / Alsin antibody was raised against Human
<b>Antigen Type:</b>	Synthetic peptide
<b>Immunogen:</b>	ALS2 / Alsin antibody was raised against synthetic peptide LKACYYYIQREKLN from the C-terminus of human ALS2 (NP_065970.2). Percent identity by BLAST analysis: Human, Chimpanzee, Gorilla, Gibbon, Marmoset, Rat, Elephant, Dog, Bovine, Bat, Horse, Rabbit, Platypus (100%); Mouse, Xenopus (93%); Turkey, Chicken (86%).
<b>Specificity:</b>	Human ALS2.
<b>Epitope:</b>	C-Terminus
<b>Reactivity:</b>	Human, Chimpanzee, Gorilla, Gibbon, Monkey, Rat, Bat, Bovine, Dog, Horse, Rabbit
<b>Predicted Reactivity:</b>	Mouse, Xenopus
<b>Purification:</b>	Immunoaffinity purified
<b>Presentation:</b>	Tris-buffered saline, pH 7.3, 0.5% BSA, 0.02% sodium azide
<b>Recommended Storage:</b>	Store at -20°C. Minimize freezing and thawing.
<b>Usage Summary:</b>	Immunohistochemistry: LS-B2740 was validated for use in immunohistochemistry on a panel of 21 formalin-fixed, paraffin-embedded (FFPE) human tissues after heat induced antigen retrieval in pH 6.0 citrate buffer. After incubation with the primary antibody, slides were incubated with biotinylated secondary antibody, followed by alkaline phosphatase-streptavidin and chromogen. The stained slides were evaluated by a pathologist to confirm staining specificity. The optimal working concentration for LS-B2740 was determined to be 3.75 ug/ml.
<b>Uses:</b>	IHC - Paraffin (3.75 µg/ml), ELISA (1:8000) (Optimal dilution to be determined by the researcher)
<b>Size:</b>	50 µg
<b>Concentration:</b>	0.5 mg/ml

**Immunohistochemistry Image:**



Anti-ALS2 antibody IHC of human brain, cortex. Immunohistochemistry of formalin-fixed, paraffin-embedded tissue after heat-induced antigen retrieval. Antibody LS-B2740 concentration 75 ug/ml.

**Requested From:**

Japan

Laboratory Reagent For In Vitro Research Use Only

Not for resale without prior written consent from LifeSpan BioSciences, Inc.

Created on 9/23/2014

© 2014 LifeSpan BioSciences