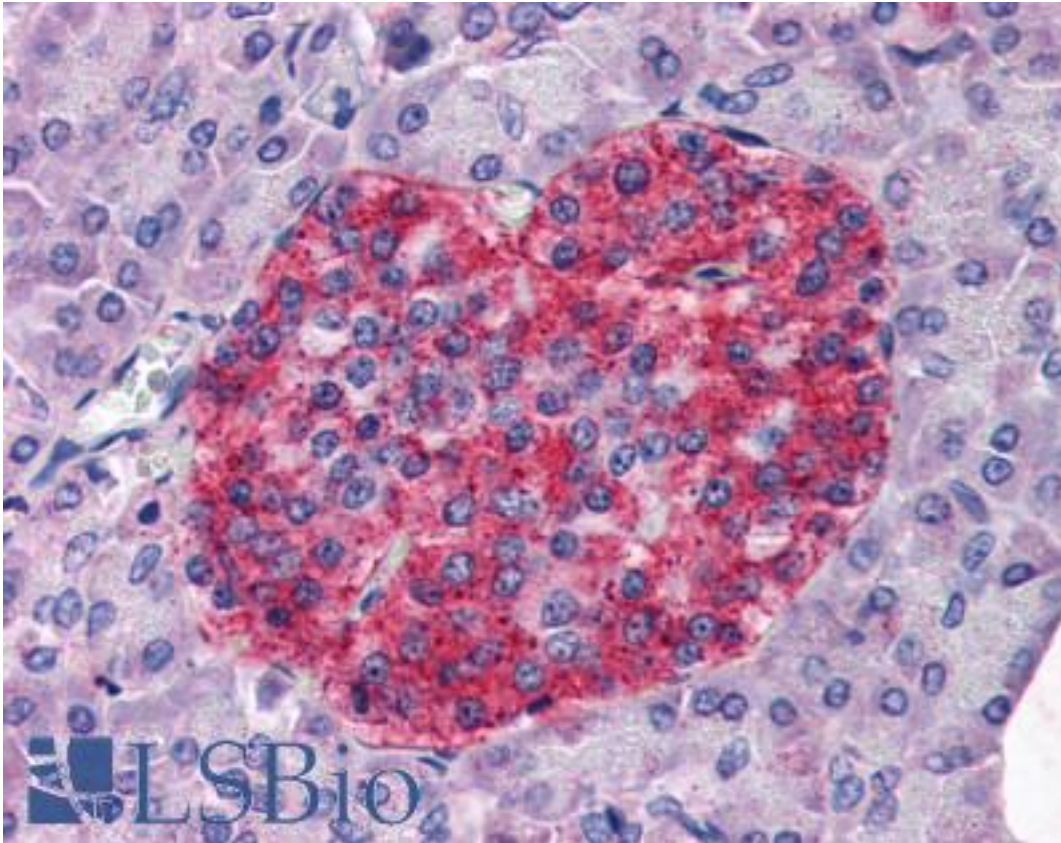


ANXA10 / Annexin A10 Goat anti-Human Polyclonal (N-Terminus) Antibody - LS-B2739 - LSBio	
CatalogID:	LS-B2739
Validation:	This antibody replaces catalog number LS-C54510. It has been validated for use in the following assays: IHC-P.
Target:	annexin A10 (ANXA10)
Synonyms:	ANXA10 Antibody, Annexin 14 Antibody, Annexin-14 Antibody, Annexin A10 Antibody, Annexin-10 Antibody, ANX14 Antibody
Host	ANXA10 antibody was produced in Goat
Clonality:	Polyclonal
Immunogen Species:	ANXA10 / Annexin A10 antibody was raised against Human
Antigen Type:	Synthetic peptide
Immunogen:	ANXA10 / Annexin A10 antibody was raised against synthetic peptide FCGDYVQGTIFPAPN from the N-terminus of human ANXA10 / Annexin A10 (NP_009124.2). Percent identity by BLAST analysis: Human, Gorilla, Gibbon, Monkey, Marmoset, Bovine (100%); Mouse, Rat (93%); Platypus (87%).
Specificity:	Human ANXA10 / Annexin A10.
Epitope:	N-Terminus
Reactivity:	Human, Gorilla, Gibbon, Monkey, Bovine
Predicted Reactivity:	Mouse, Rat
Purification:	Immunoaffinity purified
Presentation:	Tris-buffered saline, pH 7.3, 0.5% BSA, 0.02% sodium azide
Recommended Storage:	Store at -20°C. Minimize freezing and thawing.
Usage Summary:	Immunohistochemistry: LS-B2739 was validated for use in immunohistochemistry on a panel of 21 formalin-fixed, paraffin-embedded (FFPE) human tissues after heat induced antigen retrieval in pH 6.0 citrate buffer. After incubation with the primary antibody, slides were incubated with biotinylated secondary antibody, followed by alkaline phosphatase-streptavidin and chromogen. The stained slides were evaluated by a pathologist to confirm staining specificity. The optimal working concentration for LS-B2739 was determined to be 3.75 ug/ml.
Uses:	IHC - Paraffin (3.75 µg/ml), ELISA (1:8000) (Optimal dilution to be determined by the researcher)
Size:	50 µg
Concentration:	0.5 mg/ml

Immunohistochemistry Image:



Anti-Annexin A10 antibody IHC of human pancreas. Immunohistochemistry of formalin-fixed, paraffin-embedded tissue after heat-induced antigen retrieval. Antibody LS-B2739 concentration 75 ug/ml.

Requested From:

Japan

Laboratory Reagent For In Vitro Research Use Only

Not for resale without prior written consent from LifeSpan BioSciences, Inc.

Created on 9/23/2014

© 2014 LifeSpan BioSciences