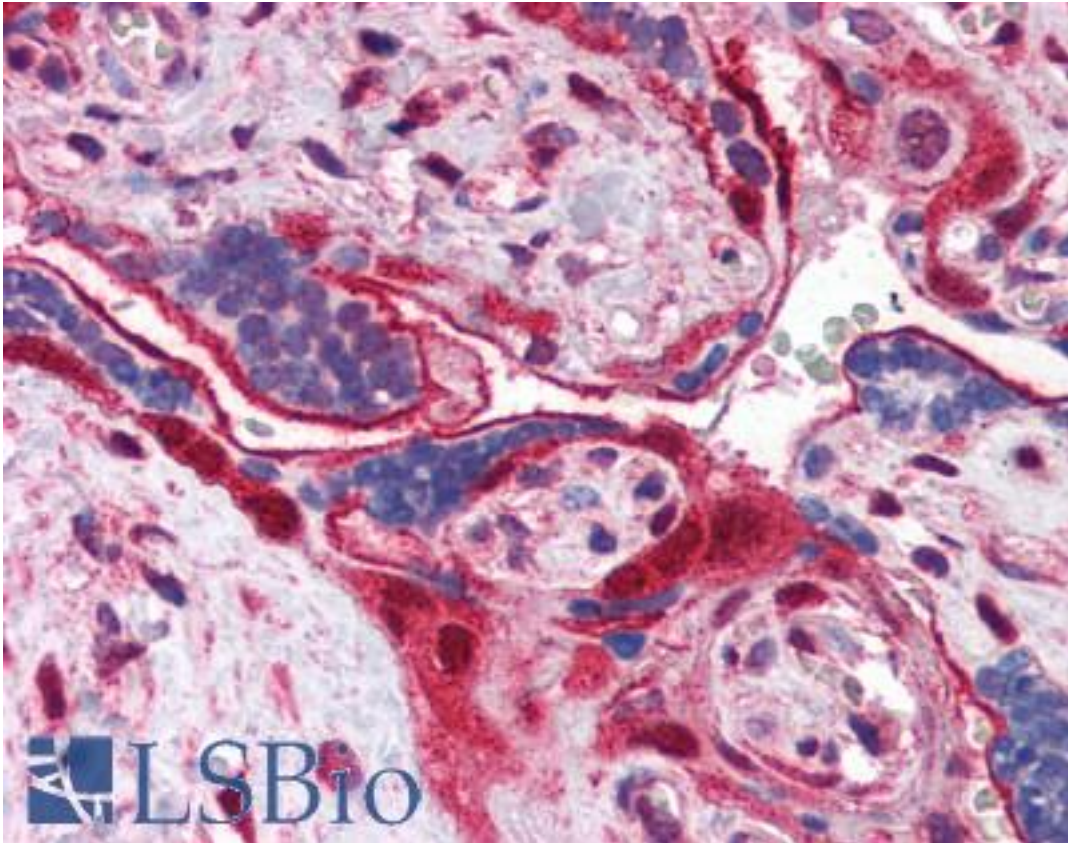


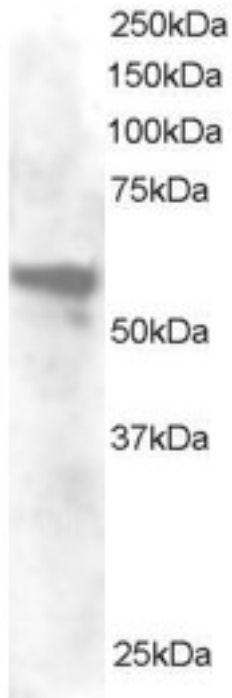
ANXA11 / Annexin XI Goat anti-Human Polyclonal (N-Terminus) Antibody - LS-B2738 - LSBio	
CatalogID:	LS-B2738
Validation:	This antibody replaces catalog number LS-C34636. It has been validated for use in the following assays: IHC-P.
Target:	annexin A11 (ANXA11)
Synonyms:	ANXA11 Antibody, 56 kDa autoantigen Antibody, Annexin A11 Antibody, Annexin XI Antibody, CAP-50 Antibody, Annexin-11 Antibody, ANX11 Antibody, Autoantigen, 56-kD Antibody, CAP50 Antibody
Host	ANXA11 antibody was produced in Goat
Clonality:	Polyclonal
Immunogen Species:	ANXA11 / Annexin XI antibody was raised against Human
Antigen Type:	Synthetic peptide
Immunogen:	ANXA11 / Annexin XI antibody was raised against synthetic peptide YPGYPPPPGGYPP-C from the N-terminus of human ANXA11 / Annexin A11 (NP_001148.1; NP_665875.1; NP_665876.1). Percent identity by BLAST analysis: Human, Gorilla, Gibbon, Marmoset, Rabbit (100%); Mouse, Rat, Hamster, Elephant, Dog, Bovine, Pig, Platypus (92%); Monkey, Horse, Opossum, Salmon, Stickleback, Pufferfish (85%).
Specificity:	Human ANXA11 / Annexin A11. NP_001148.1; NP_665875.1 and NP_665876.1 are variants that encode the same protein.
Epitope:	N-Terminus
Reactivity:	Human, Gorilla, Gibbon, Monkey, Rabbit
Predicted Reactivity:	Mouse, Rat, Bovine, Dog, Hamster, Pig
Purification:	Immunoaffinity purified
Presentation:	Tris-buffered saline, pH 7.3, 0.5% BSA, 0.02% sodium azide
Recommended Storage:	Store at -20°C. Minimize freezing and thawing.
Usage Summary:	Immunohistochemistry: LS-B2738 was validated for use in immunohistochemistry on a panel of 21 formalin-fixed, paraffin-embedded (FFPE) human tissues after heat induced antigen retrieval in pH 6.0 citrate buffer. After incubation with the primary antibody, slides were incubated with biotinylated secondary antibody, followed by alkaline phosphatase-streptavidin and chromogen. The stained slides were evaluated by a pathologist to confirm staining specificity. The optimal working concentration for LS-B2738 was determined to be 3.75 ug/ml.
Uses:	IHC - Paraffin (3.75 µg/ml), Western blot (0.2 - 1 µg/ml), ELISA (1:32000) (Optimal dilution to be determined by the researcher)
Size:	50 µg
Concentration:	0.5 mg/ml

Immunohistochemistry Image:



Anti-Annexin A11 antibody IHC of human placenta. Immunohistochemistry of formalin-fixed, paraffin-embedded tissue after heat-induced antigen retrieval. Antibody LS-B2738 concentration 75 ug/ml.

Western Blot Image:



Antibody staining (0.2 ug/ml) of HeLa lysate (RIPA buffer, 30 ug total protein/per lane).
Primary incubated for 1 hour. Detected by Western blot of chemiluminescence.

Requested From:

Japan

Laboratory Reagent For In Vitro Research Use Only

Not for resale without prior written consent from LifeSpan BioSciences, Inc.

Created on 9/23/2014

© 2014 LifeSpan BioSciences