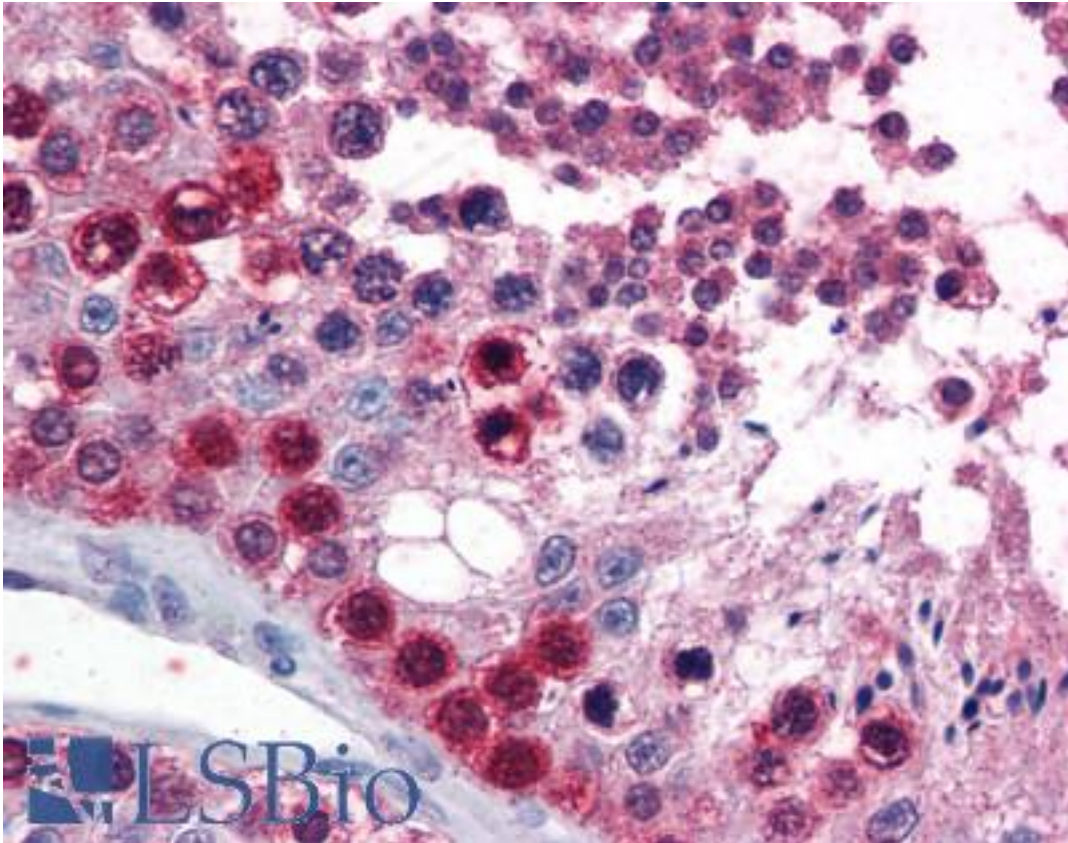


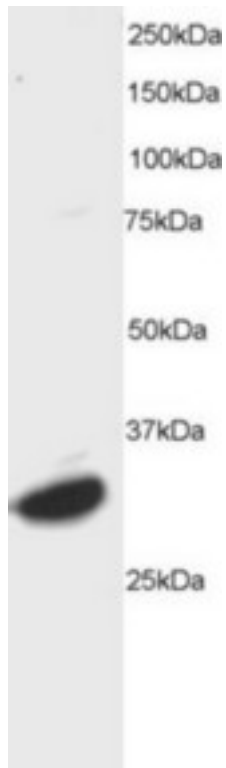
ATF7 Goat anti-Human Polyclonal (C-Terminus) Antibody - LS-B2737 - LSBio	
<b>CatalogID:</b>	LS-B2737
<b>Validation:</b>	This antibody replaces catalog number LS-C54553. It has been validated for use in the following assays: IHC-P.
<b>Target:</b>	activating transcription factor 7 (ATF7)
<b>Synonyms:</b>	ATF7 Antibody, ATFA Antibody, Transcription factor ATF-A Antibody
<b>Family / Subfamily:</b>	Transcription factor / not assigned-Transcription factor
<b>Host</b>	ATF7 antibody was produced in Goat
<b>Clonality:</b>	Polyclonal
<b>Immunogen Species:</b>	ATF7 antibody was raised against Human
<b>Antigen Type:</b>	Synthetic peptide
<b>Immunogen:</b>	ATF7 antibody was raised against synthetic peptide C-HVIMTPQSQSAGR from the C-terminus of human ATF7 (NP_001123531.1; NP_006847.1; NP_001123532.1). Percent identity by BLAST analysis: Human, Gorilla, Orangutan, Marmoset, Mouse, Rat, Hamster, Elephant, Panda, Dog, Bovine, Bat, Horse, Rabbit, Pig (100%); Lizard (92%).
<b>Specificity:</b>	Human ATF7. This antibody is expected to recognise all three reported isoforms (NP_001123531.1, NP_006847.1 and NP_001123532.1).
<b>Epitope:</b>	C-Terminus
<b>Reactivity:</b>	Human, Gorilla, Orangutan, Monkey, Mouse, Rat, Bat, Bovine, Dog, Hamster, Horse, Pig, Rabbit
<b>Purification:</b>	Immunoaffinity purified
<b>Presentation:</b>	Tris-buffered saline, pH 7.3, 0.5% BSA, 0.02% sodium azide
<b>Recommended Storage:</b>	Store at -20°C. Minimize freezing and thawing.
<b>Usage Summary:</b>	Immunohistochemistry: LS-B2737 was validated for use in immunohistochemistry on a panel of 21 formalin-fixed, paraffin-embedded (FFPE) human tissues after heat induced antigen retrieval in pH 6.0 citrate buffer. After incubation with the primary antibody, slides were incubated with biotinylated secondary antibody, followed by alkaline phosphatase-streptavidin and chromogen. The stained slides were evaluated by a pathologist to confirm staining specificity. The optimal working concentration for LS-B2737 was determined to be 3.75 ug/ml.
<b>Uses:</b>	IHC - Paraffin (3.75 µg/ml), Western blot (0.5 - 2 µg/ml), ELISA (1:16000) (Optimal dilution to be determined by the researcher)
<b>Size:</b>	50 µg
<b>Concentration:</b>	0.5 mg/ml

**Immunohistochemistry Image:**



Anti-ATF7 antibody IHC of human testis. Immunohistochemistry of formalin-fixed, paraffin-embedded tissue after heat-induced antigen retrieval. Antibody LS-B2737 concentration 75 ug/ml.

**Western Blot Image:**



Antibody staining (0.5 ug/ml) of HeLa lysate (RIPA buffer, 35 ug total protein per lane).  
Primary incubated for 1 hour. Detected by Western blot of chemiluminescence.

**Requested From:**

Japan

Laboratory Reagent For In Vitro Research Use Only

Not for resale without prior written consent from LifeSpan BioSciences, Inc.

Created on 9/23/2014

© 2014 LifeSpan BioSciences