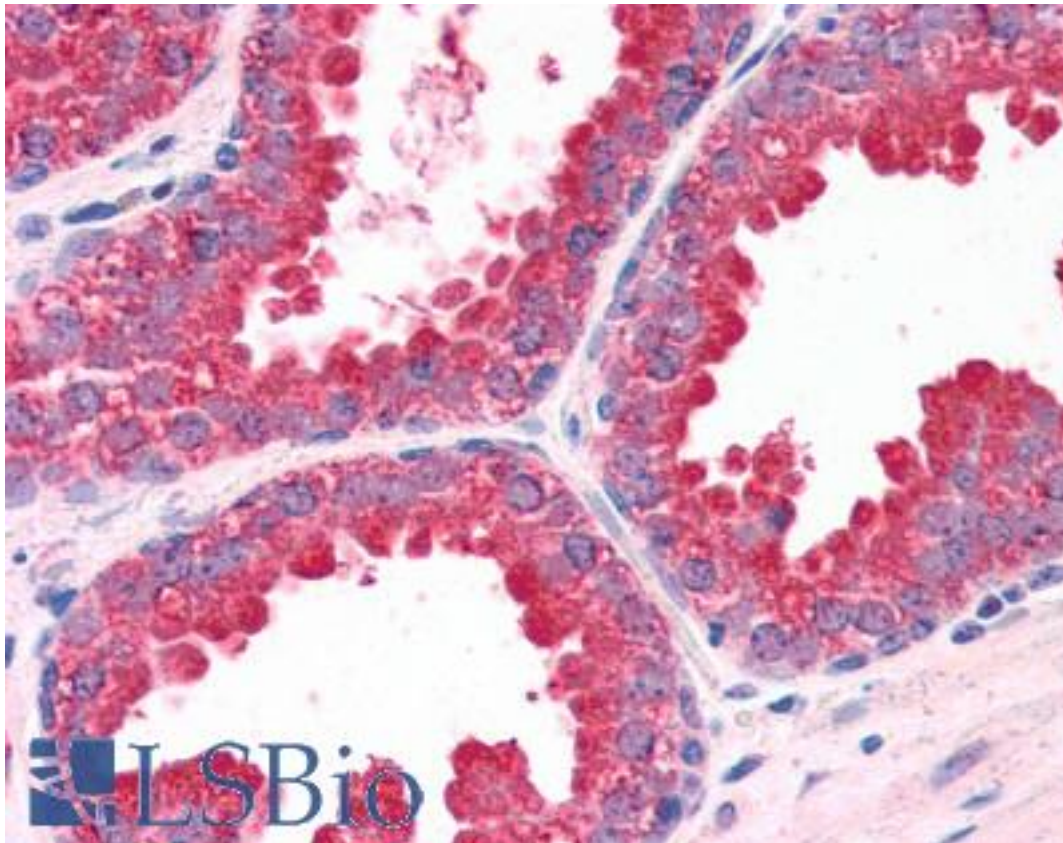


MKP-1 / DUSP1 Goat anti-Human Polyclonal (C-Terminus) Antibody - LS-B2736 - LSBio

CatalogID:	LS-B2736
Validation:	This antibody replaces catalog number LS-C54743. It has been validated for use in the following assays: IHC-P.
Target:	dual specificity phosphatase 1 (DUSP1)
Synonyms:	DUSP1 Antibody, 3CH134 Antibody, Dual specificity phosphatase 1 Antibody, ERK -inactivating phosphatase Antibody, HVH1 Antibody, MAP kinase phosphatase 1 Antibody, VH1 Antibody, PTPN10 Antibody, CL100 Antibody, MKP-1 Antibody, MKP1 Antibody
Family / Subfamily:	Protein Phosphatase / Dual specificity MKP
Host	DUSP1 antibody was produced in Goat
Clonality:	Polyclonal
Immunogen Species:	MKP-1 / DUSP1 antibody was raised against Human
Antigen Type:	Synthetic peptide
Immunogen:	MKP-1 / DUSP1 antibody was raised against synthetic peptide SYLQSPITTSPSC from the C-terminus of human DUSP1 (NP_004408.1). Percent identity by BLAST analysis: Human, Gorilla, Gibbon, Monkey, Marmoset, Elephant, Panda, Dog, Bat, Bovine, Horse, Rabbit, Pig, Turkey, Chicken, Platypus, Lizard (100%); Rat, Hamster, Xenopus, Zebrafish (92%); Mouse, Opossum, Stickleback, Pufferfish (85%).
Specificity:	Human DUSP1.
Epitope:	C-Terminus
Reactivity:	Human, Gorilla, Gibbon, Monkey, Bat, Bovine, Dog, Horse, Pig, Rabbit, Chicken
Predicted Reactivity:	Rat, Hamster, Xenopus, Zebrafish
Purification:	Immunoaffinity purified
Presentation:	Tris-buffered saline, pH 7.3, 0.5% BSA, 0.02% sodium azide
Recommended Storage:	Store at -20°C. Minimize freezing and thawing.
Usage Summary:	Immunohistochemistry: LS-B2736 was validated for use in immunohistochemistry on a panel of 21 formalin-fixed, paraffin-embedded (FFPE) human tissues after heat induced antigen retrieval in pH 6.0 citrate buffer. After incubation with the primary antibody, slides were incubated with biotinylated secondary antibody, followed by alkaline phosphatase-streptavidin and chromogen. The stained slides were evaluated by a pathologist to confirm staining specificity. The optimal working concentration for LS-B2736 was determined to be 3.75 ug/ml.
Uses:	IHC - Paraffin (3.75 µg/ml), Western blot (0.3 - 1 µg/ml), ELISA (1:32000) (Optimal dilution to be determined by the researcher)
Size:	50 µg
Concentration:	0.5 mg/ml

Immunohistochemistry Image:



Anti-DUSP1 antibody IHC of human prostate. Immunohistochemistry of formalin-fixed, paraffin-embedded tissue after heat-induced antigen retrieval. Antibody LS-B2736 concentration 75 ug/ml.

Western Blot Image:



Antibody (0.3 ug/ml) staining of HeLa lysate (35 ug protein in RIPA buffer). Primary incubation was 1 hour. Detected by chemiluminescence.

Requested From:	Japan
Laboratory Reagent For In Vitro Research Use Only	
Not for resale without prior written consent from LifeSpan BioSciences, Inc.	
Created on 9/23/2014	
© 2014 LifeSpan BioSciences	