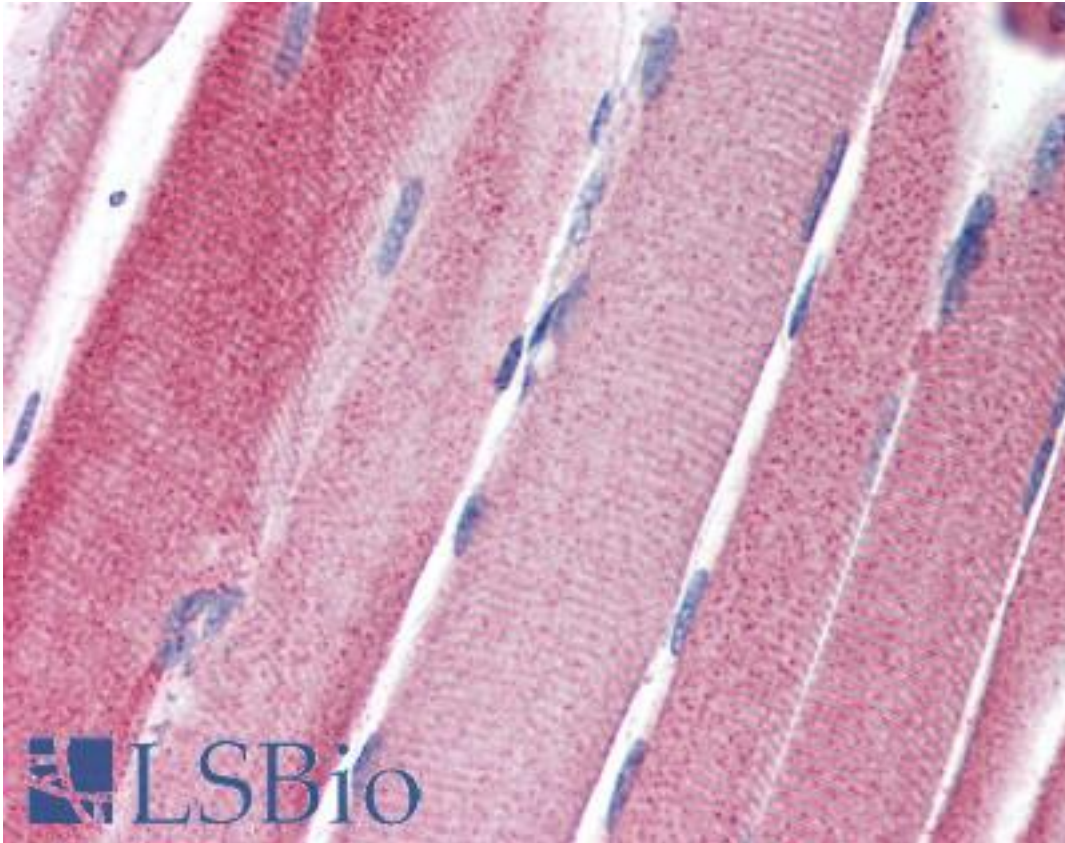


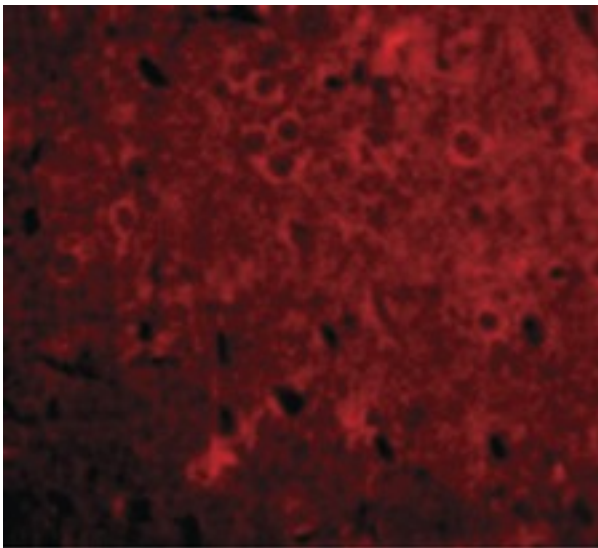
GPAM Rabbit anti-Human Polyclonal (C-Terminus) Antibody - LS-B2734 - LSBio	
CatalogID:	LS-B2734
Validation:	This antibody replaces catalog number LS-C53304. It has been validated for use in the following assays: IHC-P.
Target:	glycerol-3-phosphate acyltransferase, mitochondrial (GPAM)
Synonyms:	GPAM Antibody, GPAT Antibody, GPAT1 Antibody, GPAT-1 Antibody, KIAA1560 Antibody, RP11-426E5.2 Antibody
Host	GPAM antibody was produced in Rabbit
Clonality:	Polyclonal
Immunogen Species:	GPAM antibody was raised against Human
Immunogen:	GPAM antibody was raised against 15 amino acid peptide near the carboxy terminus of the human GPAT1.
Epitope:	C-Terminus
Reactivity:	Human, Mouse, Rat
Purification:	Immunoaffinity purified
Presentation:	PBS, 0.02% sodium azide.
Recommended Storage:	Short term 4°C, long term aliquot and store at -20°C, avoid freeze thaw cycles. Store undiluted.
Usage Summary:	Immunohistochemistry: LS-B2734 was validated for use in immunohistochemistry on a panel of 21 formalin-fixed, paraffin-embedded (FFPE) human tissues after heat induced antigen retrieval in pH 6.0 citrate buffer. After incubation with the primary antibody, slides were incubated with biotinylated secondary antibody, followed by alkaline phosphatase-streptavidin and chromogen. The stained slides were evaluated by a pathologist to confirm staining specificity. The optimal working concentration for LS-B2734 was determined to be 5 ug/ml.
Uses:	IHC - Paraffin (5 µg/ml), Western blot (1 - 2 µg/ml), ELISA (Optimal dilution to be determined by the researcher)
Size:	50 µg
Concentration:	1 mg/ml

Immunohistochemistry Image:



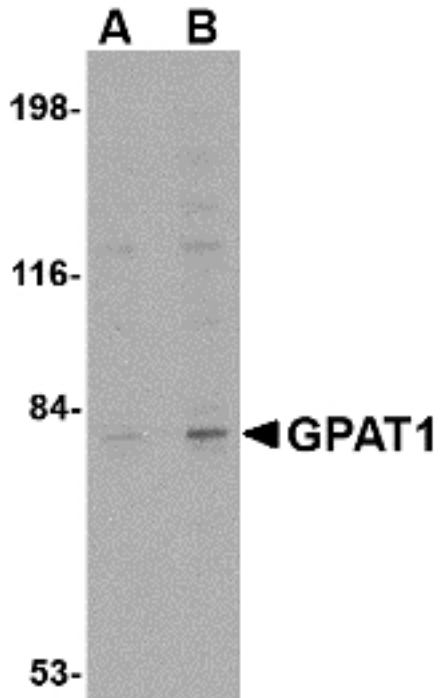
Anti-GPAM antibody IHC of human skeletal muscle. Immunohistochemistry of formalin-fixed, paraffin-embedded tissue after heat-induced antigen retrieval. Antibody LS-B2734 concentration 5 ug/ml.

Immunofluorescence Image:



Immunofluorescence of GPAT1 in Rat Brain cells with GPAT1 antibody at 20 ug/ml.

Western Blot Image:



Western blot of GPAT1 in rat brain tissue lysate with GPAT1 antibody at (A) 1 and (B) 2 ug/ml.

Requested From:

Japan

Laboratory Reagent For In Vitro Research Use Only

Not for resale without prior written consent from LifeSpan BioSciences, Inc.

Created on 9/23/2014

© 2014 LifeSpan BioSciences