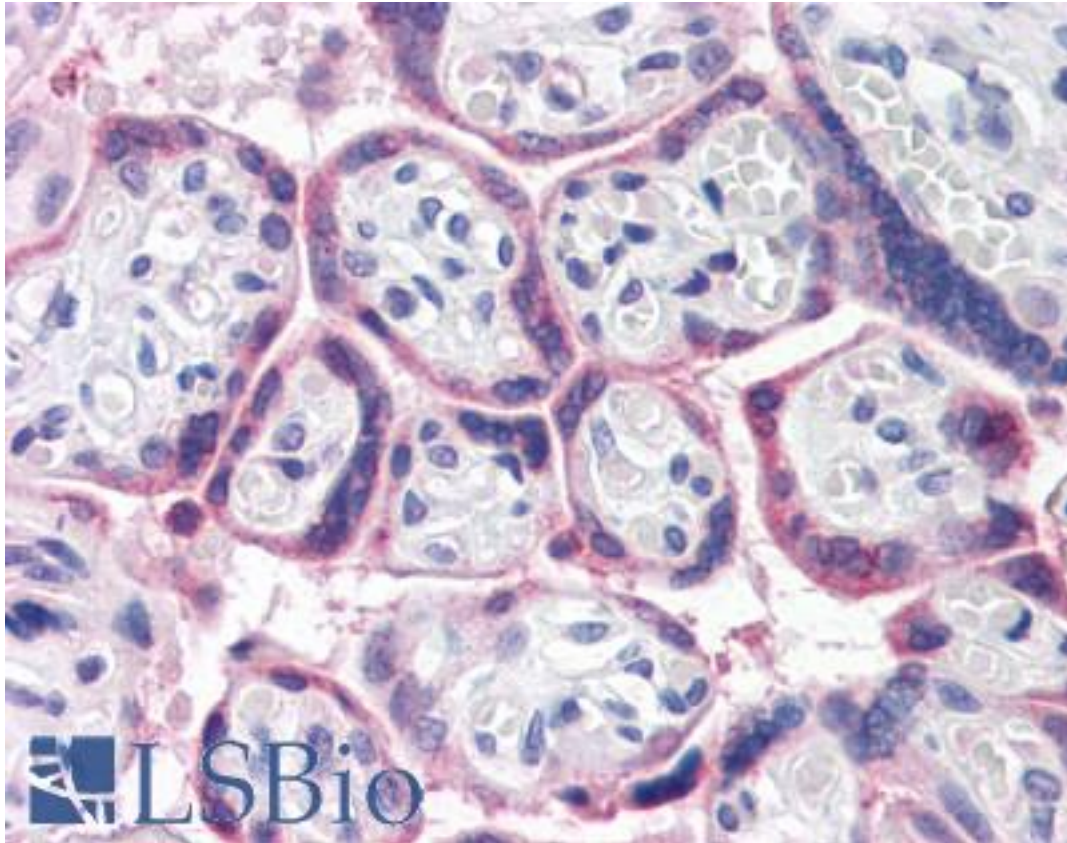


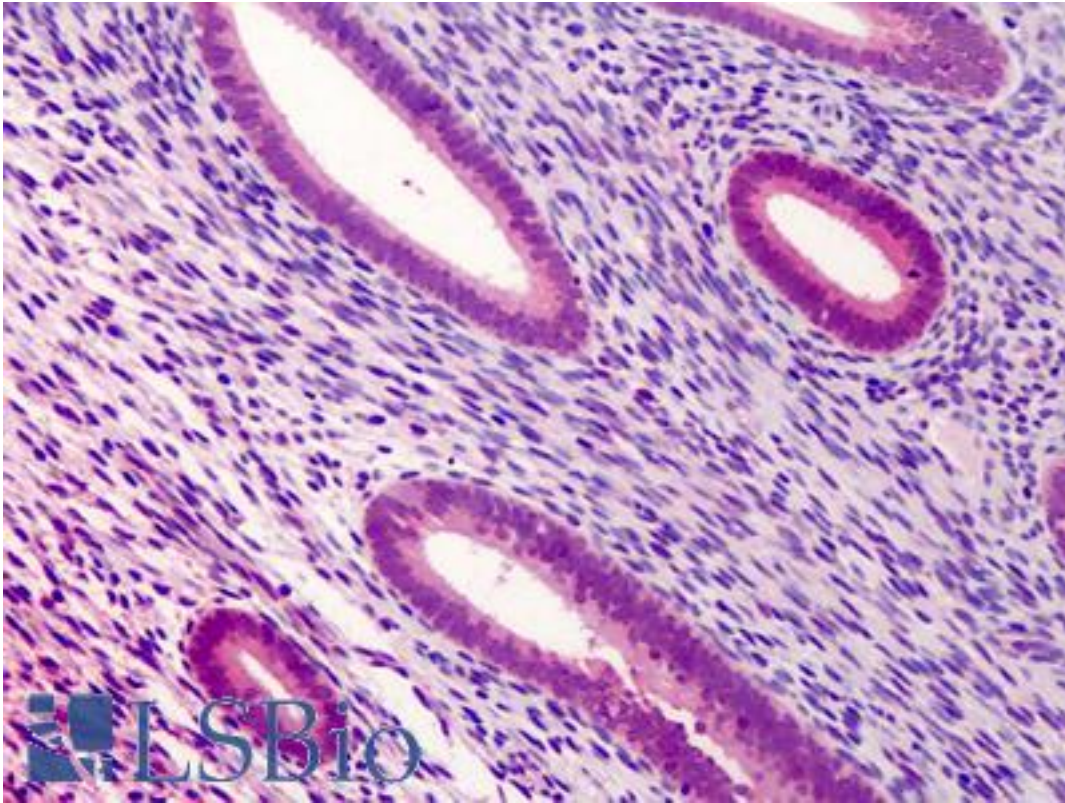
ATG16L1 / ATG16L Rabbit anti-Human Polyclonal (Internal) Antibody - LS-B2724 - LSBio	
CatalogID:	LS-B2724
Validation:	This antibody replaces catalog number LS-C53243. It has been validated for use in the following assays: IHC-P.
Target:	autophagy related 16-like 1 (<i>S. cerevisiae</i>) (ATG16L1)
Synonyms:	ATG16L1 Antibody, APG16-like 1 Antibody, APG16L Antibody, APG16L beta Antibody, ATG16L Antibody, Autophagy-related protein 16-1 Antibody, IBD10 Antibody, WD repeat domain 30 Antibody, ATG16A Antibody, WDR30 Antibody
Host	ATG16L1 antibody was produced in Rabbit
Clonality:	Polyclonal
Immunogen Species:	ATG16L1 / ATG16L antibody was raised against Human
Immunogen:	ATG16L1 / ATG16L antibody was raised against 18 amino acid peptide from near the center of human ATG16.
Epitope:	Internal
Reactivity:	Human, Mouse, Rat
Purification:	Immunoaffinity purified
Presentation:	PBS, 0.02% sodium azide.
Recommended Storage:	Short term 4°C, long term aliquot and store at -20°C, avoid freeze thaw cycles. Store undiluted.
Usage Summary:	Immunohistochemistry: LS-B2724 was validated for use in immunohistochemistry on a panel of 21 formalin-fixed, paraffin-embedded (FFPE) human tissues after heat induced antigen retrieval in pH 6.0 citrate buffer. After incubation with the primary antibody, slides were incubated with biotinylated secondary antibody, followed by alkaline phosphatase-streptavidin and chromogen. The stained slides were evaluated by a pathologist to confirm staining specificity. The optimal working concentration for LS-B2724 was determined to be 5 ug/ml.
Uses:	IHC - Paraffin (5 µg/ml), Western blot (0.25 - 0.5 µg/ml), ELISA (Optimal dilution to be determined by the researcher)
Size:	50 µg
Concentration:	1 mg/ml

Immunohistochemistry Image:



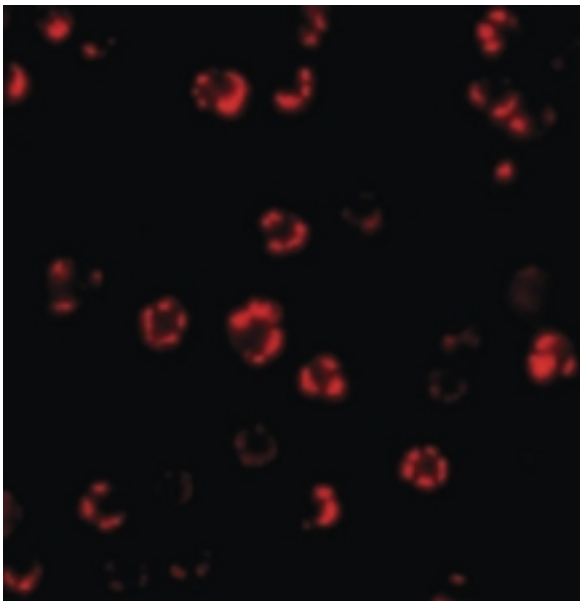
Anti-ATG16L1 antibody IHC of human placenta. Immunohistochemistry of formalin-fixed, paraffin-embedded tissue after heat-induced antigen retrieval. Antibody LS-B2724 concentration 5 ug/ml.

Immunohistochemistry Image:



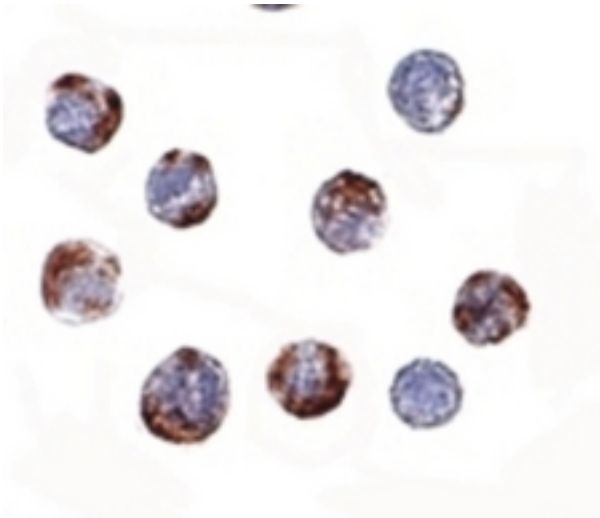
Anti-ATG16L1 antibody IHC of human uterus. Immunohistochemistry of formalin-fixed, paraffin-embedded tissue after heat-induced antigen retrieval. Antibody LS-B2724 concentration 5 ug/ml.

Immunofluorescence Image:



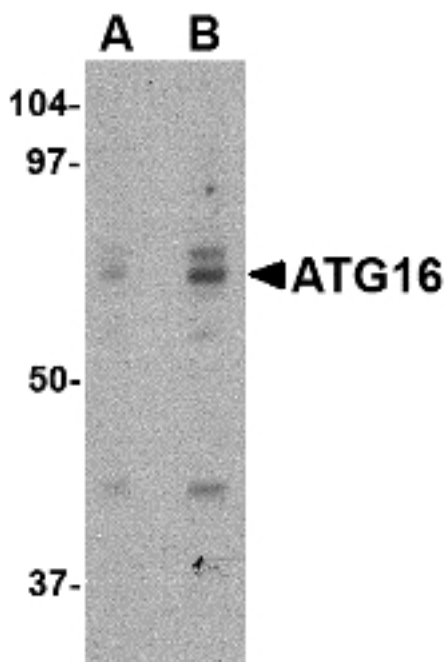
Immunofluorescence of ATG16 in HeLa cells with ATG16 antibody at 4 ug/ml.

Immunocytochemistry Image:



Immunocytochemistry of ATG16 in HeLa cells with ATG16 antibody at 2 ug/ml.

Western Blot Image:



Western blot of ATG16 in HeLa cell lysate with ATG16 antibody at (A) 0.25 and (B) 0.5 ug/ml.

Requested From:

Japan

Laboratory Reagent For In Vitro Research Use Only

Not for resale without prior written consent from LifeSpan BioSciences, Inc.

Created on 9/23/2014

© 2014 LifeSpan BioSciences