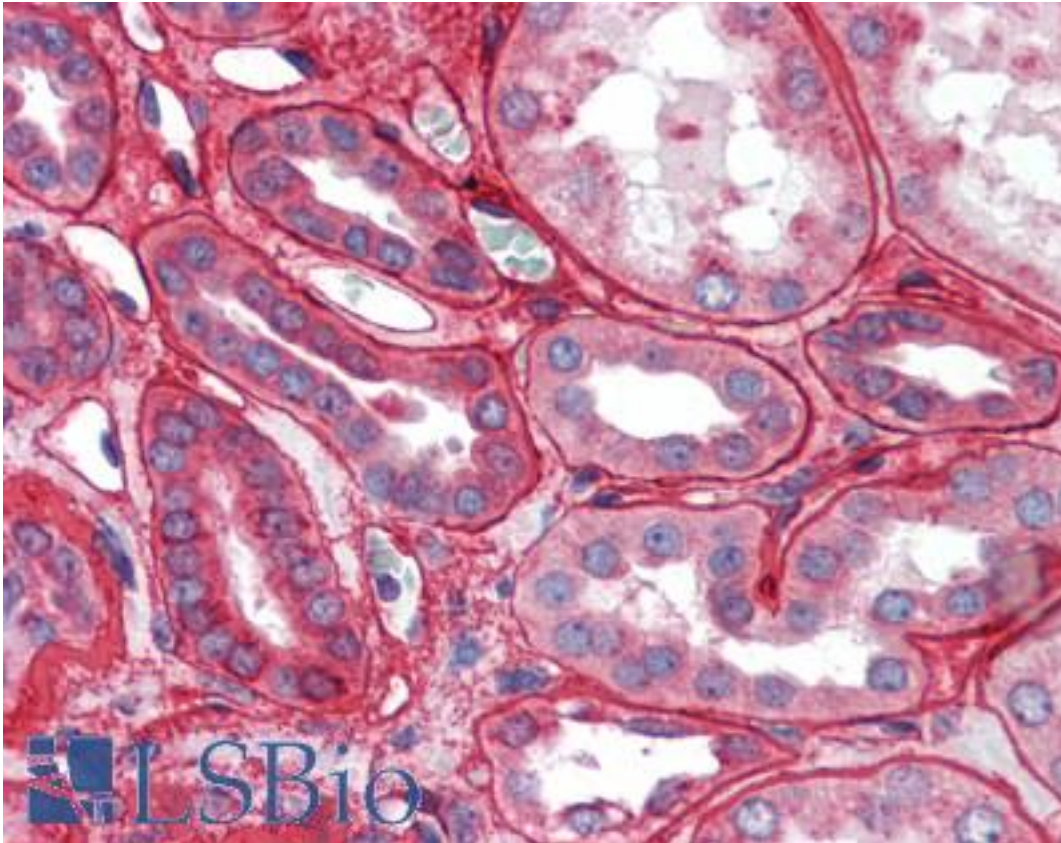


Collagen IV Rabbit anti-Human Polyclonal Antibody - LS-B2717 - LSBio	
CatalogID:	LS-B2717
Validation:	This antibody replaces catalog number LS-C87413. It has been validated for use in the following assays: IHC-P.
Target:	Collagen IV
Host	Collagen IV antibody was produced in Rabbit
Clonality:	Polyclonal
Immunogen Species:	Collagen IV antibody was raised against Human
Specificity:	Collagen Type IV from human and bovine placenta.
Reactivity:	Human, Bovine
Purification:	Immunoaffinity purified
Presentation:	0.125 M sodium borate, 0.075 M sodium chloride, 0.005 M EDTA;, pH 8.0, 0.01% sodium azide.
Recommended Storage:	Store vial at 4 C prior to opening. This product is stable at 4 C as an undiluted liquid. Dilute only prior to immediate use. For extended storage, mix with an equal volume of glycerol, aliquot contents and freeze at -20 C or below.
Usage Summary:	Immunohistochemistry: LS-B2717 was validated for use in immunohistochemistry on a panel of 21 formalin-fixed, paraffin-embedded (FFPE) human tissues after heat induced antigen retrieval in pH 6.0 citrate buffer. After incubation with the primary antibody, slides were incubated with biotinylated secondary antibody, followed by alkaline phosphatase-streptavidin and chromogen. The stained slides were evaluated by a pathologist to confirm staining specificity. The optimal working concentration for LS-B2717 was determined to be 2.5 ug/ml.
Uses:	IHC - Paraffin (2.5 µg/ml), Immunofluorescence, Western blot, Immunoprecipitation, ELISA (Optimal dilution to be determined by the researcher)
Size:	50 µg
Concentration:	1 mg/ml

Immunohistochemistry Image:



Anti-Collagen IV antibody IHC of human kidney. Immunohistochemistry of formalin-fixed, paraffin-embedded tissue after heat-induced antigen retrieval. Antibody LS-B2717 concentration 2.5 ug/ml.

Requested From:

Japan

Laboratory Reagent For In Vitro Research Use Only

Not for resale without prior written consent from LifeSpan BioSciences, Inc.

Created on 9/23/2014

© 2014 LifeSpan BioSciences