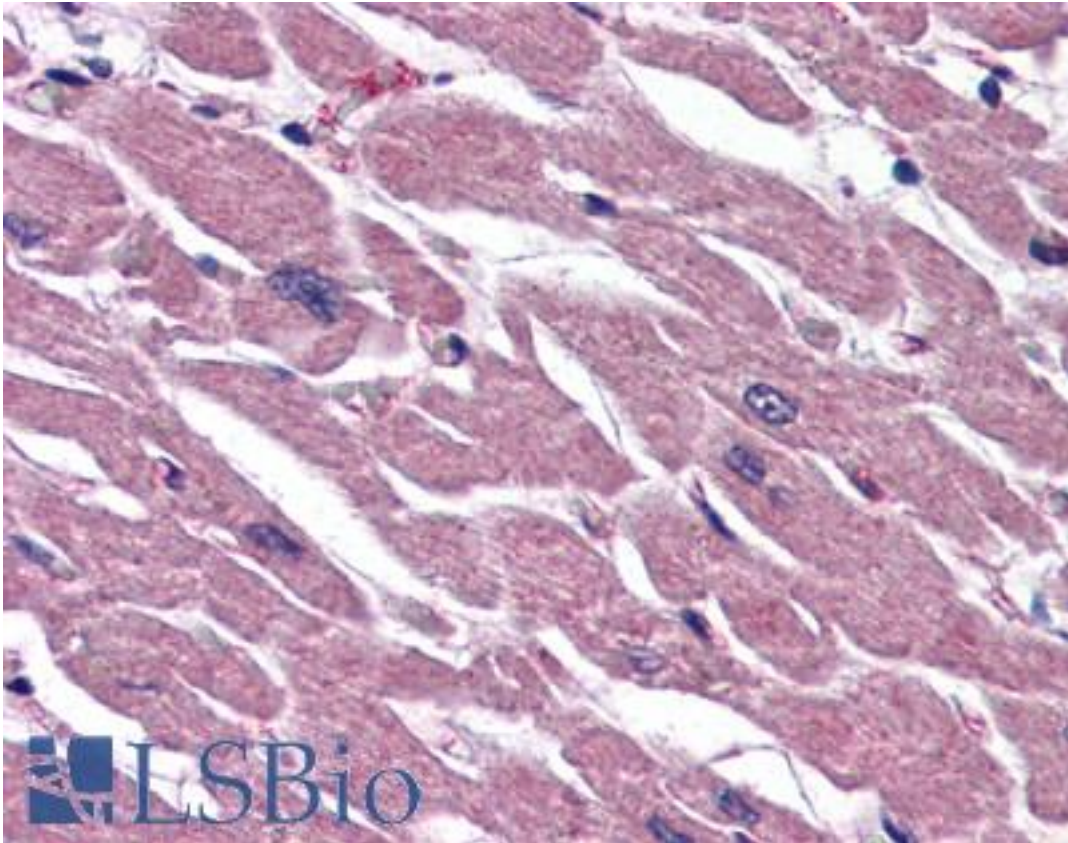


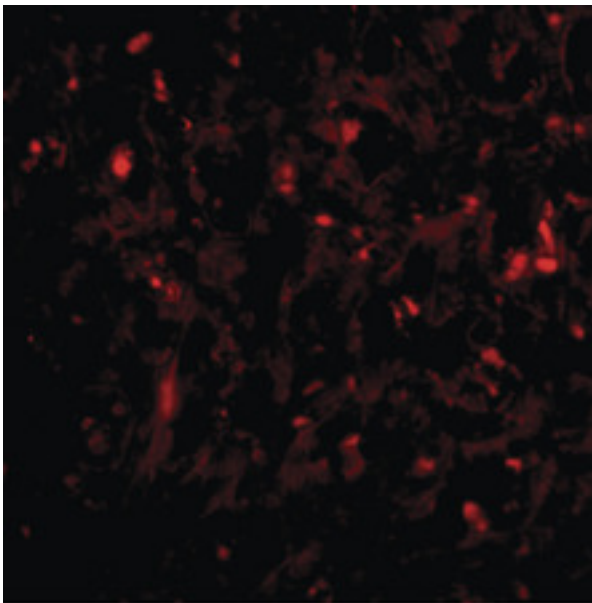
UIMC1 / RAP80 Rabbit anti-Human Polyclonal (N-Terminus) Antibody - LS-B2707 - LSBio	
CatalogID:	LS-B2707
Validation:	This antibody replaces catalog number LS-C34742. It has been validated for use in the following assays: IHC-P.
Target:	ubiquitin interaction motif containing 1 (UIMC1)
Synonyms:	UIMC1 Antibody, BRCA1-A complex subunit RAP80 Antibody, Receptor associated protein 80 Antibody, RAP80 Antibody, RXRIP110 Antibody, X2HRIP110 Antibody, Receptor-associated protein 80 Antibody
Host	UIMC1 antibody was produced in Rabbit
Clonality:	Polyclonal
Isotype:	IgG
Immunogen Species:	UIMC1 / RAP80 antibody was raised against Human
Antigen Type:	Synthetic peptide
Immunogen:	UIMC1 / RAP80 antibody was raised against synthetic peptide from human UIMC1 / RAP80.
Specificity:	a 17 amino acid peptide from near the amino terminus of human RAP80
Epitope:	N-Terminus
Reactivity:	Human, Mouse
Purification:	Immunoaffinity purified
Presentation:	PBS, 0.02% sodium azide.
Recommended Storage:	Short term 4°C, long term aliquot and store at -20°C, avoid freeze thaw cycles. Store undiluted.
Usage Summary:	Immunohistochemistry: LS-B2707 was validated for use in immunohistochemistry on a panel of 21 formalin-fixed, paraffin-embedded (FFPE) human tissues after heat induced antigen retrieval in pH 6.0 citrate buffer. After incubation with the primary antibody, slides were incubated with biotinylated secondary antibody, followed by alkaline phosphatase-streptavidin and chromogen. The stained slides were evaluated by a pathologist to confirm staining specificity. The optimal working concentration for LS-B2707 was determined to be 5 ug/ml.
Uses:	IHC - Paraffin (5 µg/ml), Western blot (1 - 2 µg/ml), ELISA (Optimal dilution to be determined by the researcher)
Size:	50 µg
Concentration:	1 mg/ml

Immunohistochemistry Image:



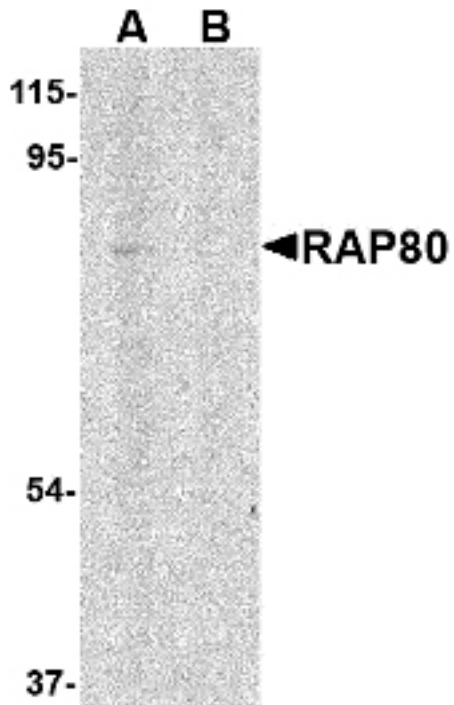
Anti-UIMC1 / RAP80 antibody IHC of human heart. Immunohistochemistry of formalin-fixed, paraffin-embedded tissue after heat-induced antigen retrieval. Antibody LS-B2707 concentration 5 ug/ml.

Immunofluorescence Image:



Immunofluorescence of RAP80 in human spleen tissue with RAP80 antibody at 20 ug/ml.

Western Blot Image:



Immunohistochemistry of RAP80 in human spleen tissue with RAP80 antibody at 2.5 µg/ml.

Requested From:

Japan

Laboratory Reagent For In Vitro Research Use Only

Not for resale without prior written consent from LifeSpan BioSciences, Inc.

Created on 9/23/2014

© 2014 LifeSpan BioSciences