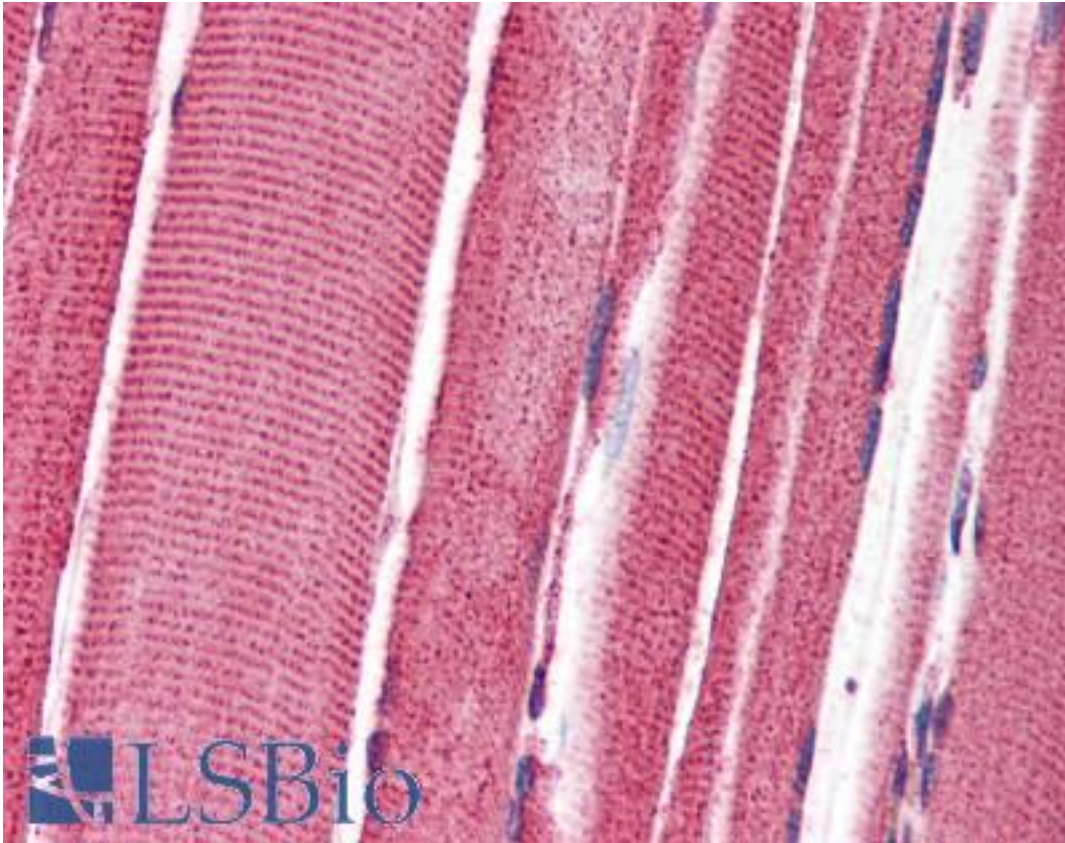


FEZ2 Rabbit anti-Human Polyclonal (C-Terminus) Antibody - LS-B2703 - LSBio

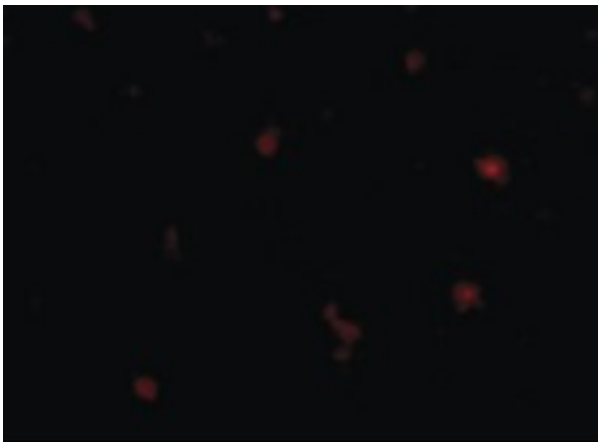
<b>CatalogID:</b>	LS-B2703
<b>Validation:</b>	This antibody replaces catalog number LS-C53232. It has been validated for use in the following assays: IHC-P.
<b>Target:</b>	fasciculation and elongation protein zeta 2 (zygin II) (FEZ2)
<b>Synonyms:</b>	FEZ2 Antibody, HUM3CL Antibody, Zygin II Antibody, Zygin 2 Antibody, Zygin-2 Antibody
<b>Host</b>	FEZ2 antibody was produced in Rabbit
<b>Clonality:</b>	Polyclonal
<b>Immunogen Species:</b>	FEZ2 antibody was raised against Human
<b>Immunogen:</b>	FEZ2 antibody was raised against 15 amino acid peptide from near the carboxy terminus of human FEZ2.
<b>Epitope:</b>	C-Terminus
<b>Reactivity:</b>	Human, Mouse, Rat
<b>Purification:</b>	Immunoaffinity purified
<b>Presentation:</b>	PBS, 0.02% sodium azide.
<b>Recommended Storage:</b>	Short term 4°C, long term aliquot and store at -20°C, avoid freeze thaw cycles. Store undiluted.
<b>Usage Summary:</b>	Immunohistochemistry: LS-B2703 was validated for use in immunohistochemistry on a panel of 21 formalin-fixed, paraffin-embedded (FFPE) human tissues after heat induced antigen retrieval in pH 6.0 citrate buffer. After incubation with the primary antibody, slides were incubated with biotinylated secondary antibody, followed by alkaline phosphatase-streptavidin and chromogen. The stained slides were evaluated by a pathologist to confirm staining specificity. The optimal working concentration for LS-B2703 was determined to be 3 ug/ml.
<b>Uses:</b>	IHC - Paraffin (3 µg/ml), Western blot (0.5 - 1 µg/ml), ELISA (Optimal dilution to be determined by the researcher)
<b>Uses Not Recommended:</b>	Immunofluorescence
<b>Size:</b>	50 µg
<b>Concentration:</b>	1 mg/ml

**Immunohistochemistry Image:**



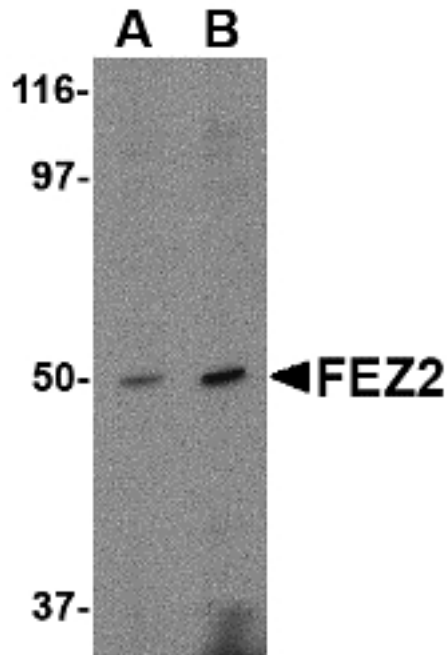
Anti-FEZ2 antibody IHC of human skeletal muscle. Immunohistochemistry of formalin-fixed, paraffin-embedded tissue after heat-induced antigen retrieval. Antibody LS-B2703 concentration 3 ug/ml.

**Immunofluorescence Image:**



Immunofluorescence of FEZ2 in Human Brain cells with FEZ2 antibody at 5 ug/ml.

**Western Blot Image:**



Western blot of FEZ2 in mouse brain tissue lysate with FEZ2 antibody at (A) 0.5, and (B) 1 ug/ml.

**Requested From:**

Japan

Laboratory Reagent For In Vitro Research Use Only

Not for resale without prior written consent from LifeSpan BioSciences, Inc.

Created on 9/23/2014

© 2014 LifeSpan BioSciences