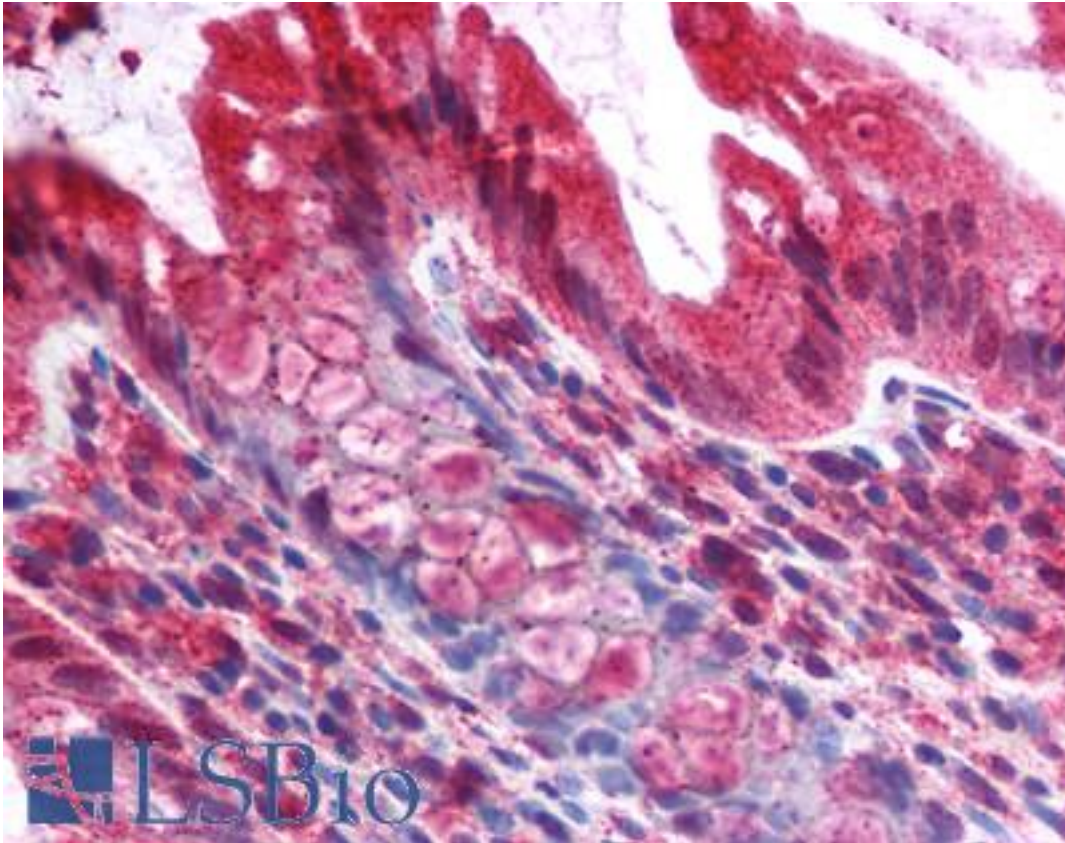


**PUMA Rabbit anti-Human Polyclonal Antibody - LS-B270 - LSBio**

<b>CatalogID:</b>	LS-B270
<b>Validation:</b>	This antibody replaces catalog number LS-C2856. It has been validated for use in the following assays: IHC.
<b>Target:</b>	BCL2 binding component 3 (BBC3)
<b>Synonyms:</b>	BBC3 Antibody, Bcl-2-binding component 3 Antibody, BCL2 binding component 3 Antibody, JFY-1 Antibody, JFY1 Antibody, PUMA Antibody
<b>Family / Subfamily:</b>	Apoptosis / not assigned-Apoptosis
<b>Host</b>	BBC3 antibody was produced in Rabbit
<b>Clonality:</b>	Polyclonal
<b>Immunogen Species:</b>	PUMA antibody was raised against Human
<b>Immunogen:</b>	PUMA antibody was raised against reacts with a 17 residue sequence [EQHLESPVPSAPGALAG] found in the exon-3-encoded region in the human PUMA-alpha and PUMA-beta forms of the protein. Recognizes both forms of the protein. Percent identity by BLAST analysis: Human, Marmoset, Panda, Pig (100%); Horse (94%); Mouse, Rat (88%).
<b>Specificity:</b>	Human PUMA protein.
<b>Reactivity:</b>	Human, Monkey, Pig
<b>Predicted Reactivity:</b>	Horse
<b>Purification:</b>	Affinity purified
<b>Presentation:</b>	PBS, 0.02% sodium azide.
<b>Recommended Storage:</b>	Long term: -20°C; Short term: +4°C. Avoid repeat freeze-thaw cycles.
<b>Usage Summary:</b>	Immunohistochemistry: LS-B270 was validated for use in immunohistochemistry on a panel of 21 formalin-fixed, paraffin-embedded (FFPE) human tissues after heat induced antigen retrieval in pH 6.0 citrate buffer. After incubation with the primary antibody, slides were incubated with biotinylated secondary antibody, followed by alkaline phosphatase-streptavidin and chromogen. The stained slides were evaluated by a pathologist to confirm staining specificity. The optimal working concentration for LS-B270 was determined to be 2.5 ug/ml.
<b>Uses:</b>	IHC - Paraffin (2.5 µg/ml), Western blot (1:500 - 1:1000) (Optimal dilution to be determined by the researcher)
<b>Size:</b>	50 µl
<b>Concentration:</b>	1 mg/ml

**Immunohistochemistry Image:**



Anti-BBC3 / PUMA antibody IHC of human colon. Immunohistochemistry of formalin-fixed, paraffin-embedded tissue after heat-induced antigen retrieval. Antibody LS-B270 concentration 5 ug/ml.

**Requested From:**

Japan

Laboratory Reagent For In Vitro Research Use Only

Not for resale without prior written consent from LifeSpan BioSciences, Inc.

Created on 9/23/2014

© 2014 LifeSpan BioSciences