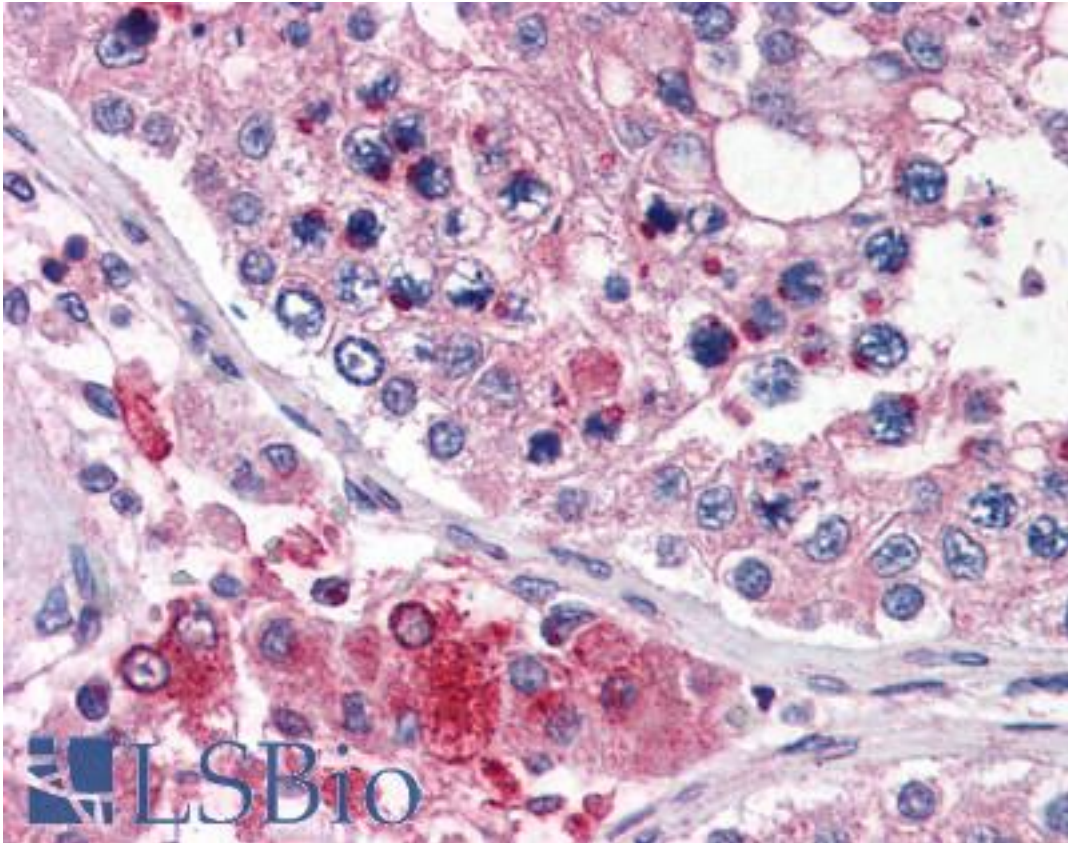


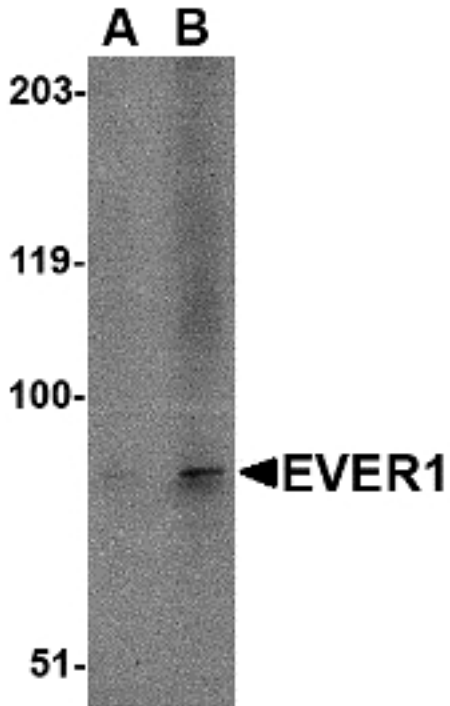
TMC6 Rabbit anti-Human Polyclonal (N-Terminus) Antibody - LS-B2699 - LSBio	
<b>CatalogID:</b>	LS-B2699
<b>Validation:</b>	This antibody replaces catalog number LS-C53285. It has been validated for use in the following assays: IHC-P.
<b>Target:</b>	transmembrane channel-like 6 (TMC6)
<b>Synonyms:</b>	TMC6 Antibody, EV1 Antibody, EVIN1 Antibody, Protein LAK-4 Antibody, LAK-4P Antibody, Transmembrane channel-like 6 Antibody, EVER1 Antibody
<b>Host</b>	TMC6 antibody was produced in Rabbit
<b>Clonality:</b>	Polyclonal
<b>Immunogen Species:</b>	TMC6 antibody was raised against Human
<b>Immunogen:</b>	TMC6 antibody was raised against 14 amino acid peptide from near the amino terminus of human EVER1.
<b>Epitope:</b>	N-Terminus
<b>Reactivity:</b>	Human, Mouse, Rat
<b>Purification:</b>	Immunoaffinity purified
<b>Presentation:</b>	PBS, 0.02% sodium azide.
<b>Recommended Storage:</b>	Short term 4°C, long term aliquot and store at -20°C, avoid freeze thaw cycles. Store undiluted.
<b>Usage Summary:</b>	Immunohistochemistry: LS-B2699 was validated for use in immunohistochemistry on a panel of 21 formalin-fixed, paraffin-embedded (FFPE) human tissues after heat induced antigen retrieval in pH 6.0 citrate buffer. After incubation with the primary antibody, slides were incubated with biotinylated secondary antibody, followed by alkaline phosphatase-streptavidin and chromogen. The stained slides were evaluated by a pathologist to confirm staining specificity. The optimal working concentration for LS-B2699 was determined to be 5 ug/ml.
<b>Uses:</b>	IHC - Paraffin (5 µg/ml), Western blot (1 - 2 µg/ml), ELISA (Optimal dilution to be determined by the researcher)
<b>Size:</b>	50 µg
<b>Concentration:</b>	1 mg/ml

**Immunohistochemistry Image:**



Anti-TMC6 antibody IHC of human testis. Immunohistochemistry of formalin-fixed, paraffin-embedded tissue after heat-induced antigen retrieval. Antibody LS-B2699 concentration 5 ug/ml.

Western Blot Image:



Western blot of EVER1 in A-20 cell lysate with EVER1 antibody at (A) 1 and (B) 2 ug/ml.

Requested From:

Japan

Laboratory Reagent For In Vitro Research Use Only

Not for resale without prior written consent from LifeSpan BioSciences, Inc.

Created on 9/23/2014

© 2014 LifeSpan BioSciences