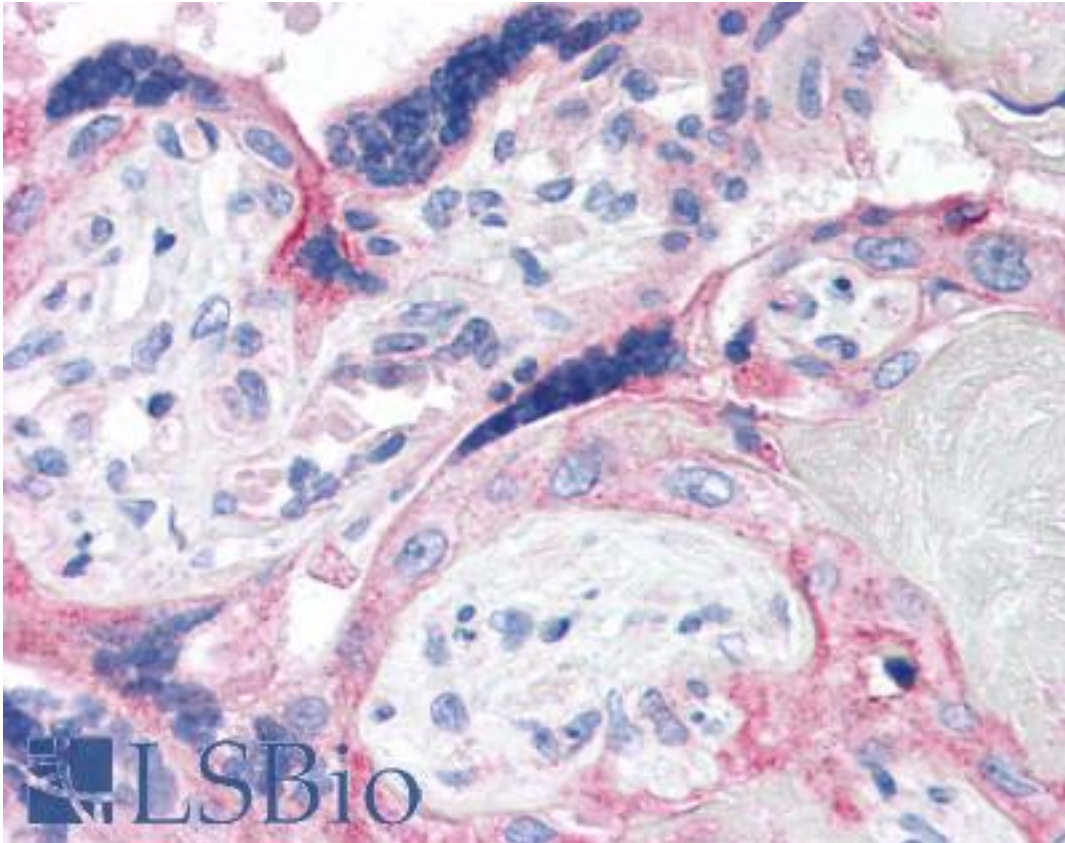


CRH / CRF Rabbit anti-Human Polyclonal (C-Terminus) Antibody - LS-B2685 - LSBio

CatalogID:	LS-B2685
Validation:	This antibody replaces catalog number LS-C50244. It has been validated for use in the following assays: IHC-P.
Target:	corticotropin releasing hormone (CRH)
Synonyms:	CRH Antibody, CRF Antibody, Corticoliberin Antibody, Corticotropin-releasing factor Antibody
Family / Subfamily:	Hormone / not assigned-Hormone
Host	CRH antibody was produced in Rabbit
Clonality:	Polyclonal
Immunogen Species:	CRH / CRF antibody was raised against Human
Antigen Type:	Synthetic peptide
Immunogen:	CRH / CRF antibody was raised against a synthetic peptide from C-terminus of human CRF protein.
Epitope:	C-Terminus
Reactivity:	Human, Mouse, Rat
Purification:	Immunoaffinity purified
Presentation:	10 mM PBS, pH 7.4, BSA, 0.1% sodium azide.
Recommended Storage:	+4°C or -20°C, Avoid repeated freezing and thawing.
Usage Summary:	Immunohistochemistry: LS-B2685 was validated for use in immunohistochemistry on a panel of 21 formalin-fixed, paraffin-embedded (FFPE) human tissues after heat induced antigen retrieval in pH 6.0 citrate buffer. After incubation with the primary antibody, slides were incubated with biotinylated secondary antibody, followed by alkaline phosphatase-streptavidin and chromogen. The stained slides were evaluated by a pathologist to confirm staining specificity. The optimal working concentration for LS-B2685 was determined to be 20 ug/ml.
Uses:	IHC - Paraffin (20 µg/ml) (Optimal dilution to be determined by the researcher)
Size:	250 µl
Concentration:	0.2 mg/ml

Immunohistochemistry Image:



Anti-CRH antibody IHC of human placenta. Immunohistochemistry of formalin-fixed, paraffin-embedded tissue after heat-induced antigen retrieval. Antibody LS-B2685 concentration 20 ug/ml.

Requested From:

Japan

Laboratory Reagent For In Vitro Research Use Only

Not for resale without prior written consent from LifeSpan BioSciences, Inc.

Created on 9/23/2014

© 2014 LifeSpan BioSciences