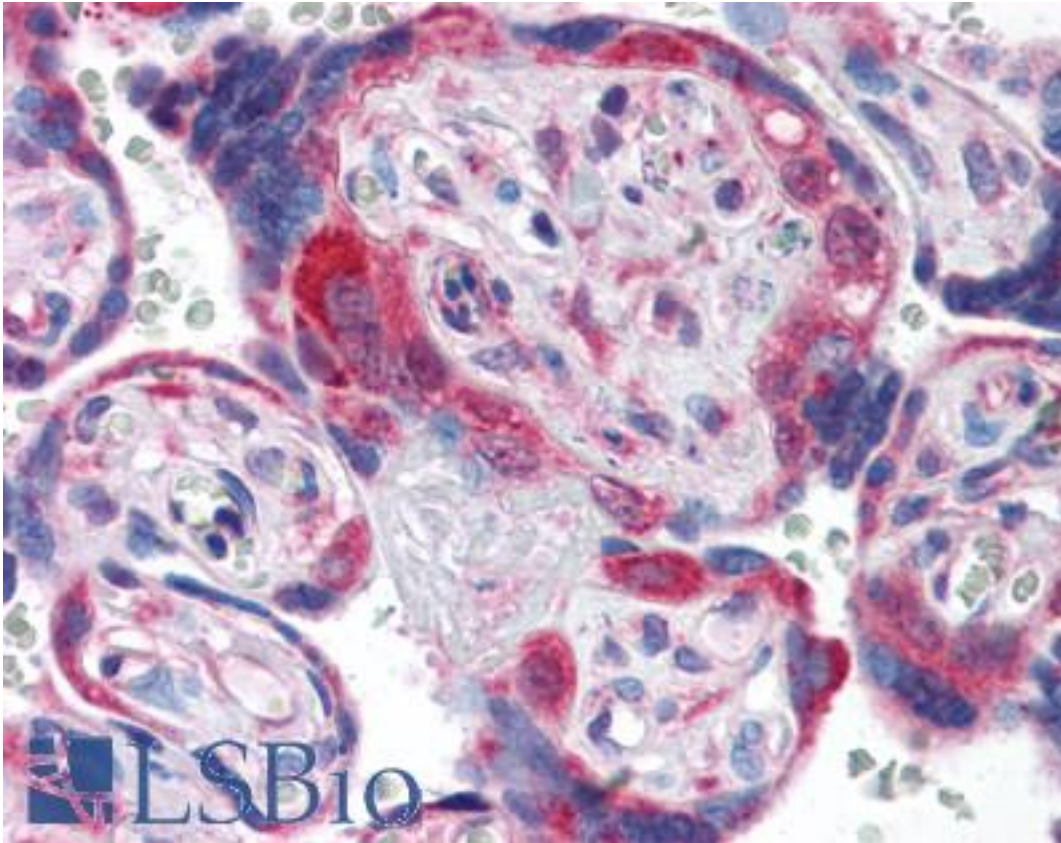


PDGFRA / PDGFR Alpha Rabbit anti-Human Polyclonal (C-Terminus) Antibody - LS-B2683 - LSBio	
CatalogID:	LS-B2683
Validation:	This antibody replaces catalog number LS-C9624. It has been validated for use in the following assays: IHC-P.
Target:	platelet-derived growth factor receptor, alpha polypeptide (PDGFRA)
Synonyms:	PDGFRA Antibody, CD140A Antibody, CD140a antigen Antibody, PDGFalphaR Antibody, PDGFR2 Antibody, PDGFRalpha Antibody, AlphaPDGFR Antibody, RHEPDGFRA Antibody, PDGF receptor alpha Antibody, PDGFR-2 Antibody, PDGFRA/BCR fusion Antibody, APDGFR Antibody, Pdgf alpha-receptor Antibody, PDGF-R-alpha Antibody, PDGFR-alpha Antibody
Family / Subfamily:	Protein Kinase / PDGF Receptor
Host	PDGFRA antibody was produced in Rabbit
Clonality:	Polyclonal
Isotype:	IgG
Immunogen Species:	PDGFRA / PDGFR Alpha antibody was raised against Human
Antigen Type:	Synthetic peptide
Immunogen:	PDGFRA / PDGFR Alpha antibody was raised against a synthetic peptide derived from C-terminal of human PDGFR alpha. Cellular Localization: Cytoplasmic and cell membrane.
Specificity:	Recognizes human PDGFR, alpha. Species cross-reactivity: Mouse.
Epitope:	C-Terminus
Reactivity:	Human, Mouse
Purification:	Immunoaffinity purified
Presentation:	PBS, pH 7.6, 0.2% BSA, 15 mM sodium azide.
Recommended Storage:	+4°C or -20°C, Avoid repeated freezing and thawing.
Usage Summary:	Immunohistochemistry: LS-B2683 was validated for use in immunohistochemistry on a panel of 21 formalin-fixed, paraffin-embedded (FFPE) human tissues after heat induced antigen retrieval in pH 6.0 citrate buffer. After incubation with the primary antibody, slides were incubated with biotinylated secondary antibody, followed by alkaline phosphatase-streptavidin and chromogen. The stained slides were evaluated by a pathologist to confirm staining specificity. The optimal working concentration for LS-B2683 was determined to be 5 ug/ml.
Uses:	IHC - Paraffin (5 µg/ml), ELISA (Optimal dilution to be determined by the researcher)
Size:	50 µl

Immunohistochemistry Image:



Anti-PDGFR α antibody IHC of human placenta. Immunohistochemistry of formalin-fixed, paraffin-embedded tissue after heat-induced antigen retrieval. Antibody LS-B2683 concentration 5 ug/ml.

Requested From:

Japan

Laboratory Reagent For In Vitro Research Use Only

Not for resale without prior written consent from LifeSpan BioSciences, Inc.

Created on 9/23/2014

© 2014 LifeSpan BioSciences