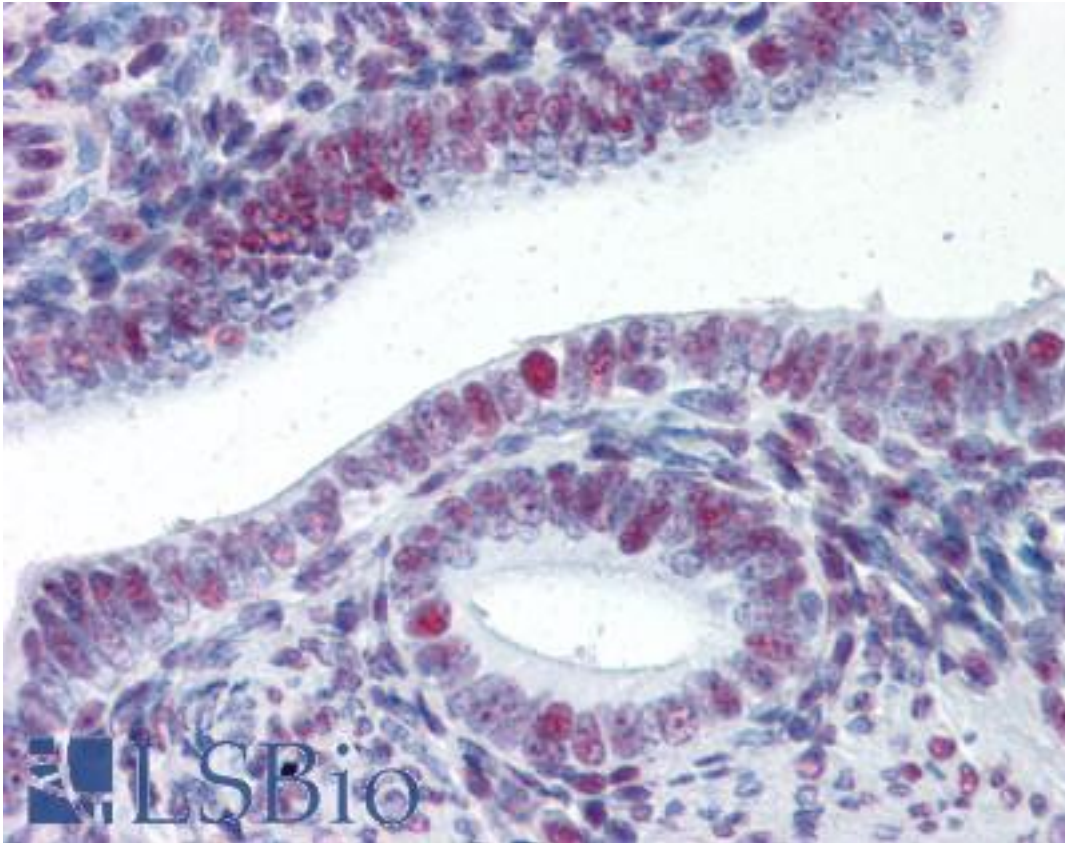


### HSF1 Rabbit anti-Human Polyclonal Antibody - LS-B2682 - LSBio

<b>CatalogID:</b>	LS-B2682
<b>Validation:</b>	This antibody replaces catalog number LS-C7378. It has been validated for use in the following assays: IHC-P.
<b>Target:</b>	heat shock transcription factor 1 (HSF1)
<b>Synonyms:</b>	HSF1 Antibody, HSTF 1 Antibody, Heat shock factor protein 1 Antibody, HSF 1 Antibody, HSTF1 Antibody
<b>Host</b>	HSF1 antibody was produced in Rabbit
<b>Clonality:</b>	Polyclonal
<b>Isotype:</b>	IgG
<b>Immunogen Species:</b>	HSF1 antibody was raised against Human
<b>Immunogen:</b>	HSF1 antibody was raised against recombinant human HSF-1 expressed in E. coli.
<b>Specificity:</b>	Recognizes human HSF-1 at ~85kD protein in unstressed cells and an ~95kD protein in heat shocked cells, corresponding to the molecular masses of the inactive and activated forms respectively of HSF-1. Species cross-reactivity: mouse, rat, bovine, canine, chicken, Drosophila, gerbil, guinea pig, hamster, monkey, porcine, rabbit, sheep and Xenopus.
<b>Reactivity:</b>	Human, Monkey, Mouse, Rat, Rabbit
<b>Purification:</b>	Protein A purified
<b>Presentation:</b>	PBS, 0.09% sodium azide, 50% glycerol.
<b>Recommended Storage:</b>	+4°C or -20°C, Avoid repeated freezing and thawing.
<b>Usage Summary:</b>	Immunohistochemistry: LS-B2682 was validated for use in immunohistochemistry on a panel of 21 formalin-fixed, paraffin-embedded (FFPE) human tissues after heat induced antigen retrieval in pH 6.0 citrate buffer. After incubation with the primary antibody, slides were incubated with biotinylated secondary antibody, followed by alkaline phosphatase-streptavidin and chromogen. The stained slides were evaluated by a pathologist to confirm staining specificity. The optimal working concentration for LS-B2682 was determined to be 5 ug/ml. Western Blot: Positive control: Recombinant Human HSF-1 Protein.
<b>Uses:</b>	IHC - Paraffin (5 µg/ml), Western blot (1:500) (Optimal dilution to be determined by the researcher)
<b>Size:</b>	50 µg
<b>Concentration:</b>	1 mg/ml

**Immunohistochemistry Image:**



Anti-HSF1 antibody IHC of human uterus. Immunohistochemistry of formalin-fixed, paraffin-embedded tissue after heat-induced antigen retrieval. Antibody LS-B2682 concentration 5 ug/ml.

**Requested From:**

Japan

Laboratory Reagent For In Vitro Research Use Only

Not for resale without prior written consent from LifeSpan BioSciences, Inc.

Created on 9/23/2014

© 2014 LifeSpan BioSciences