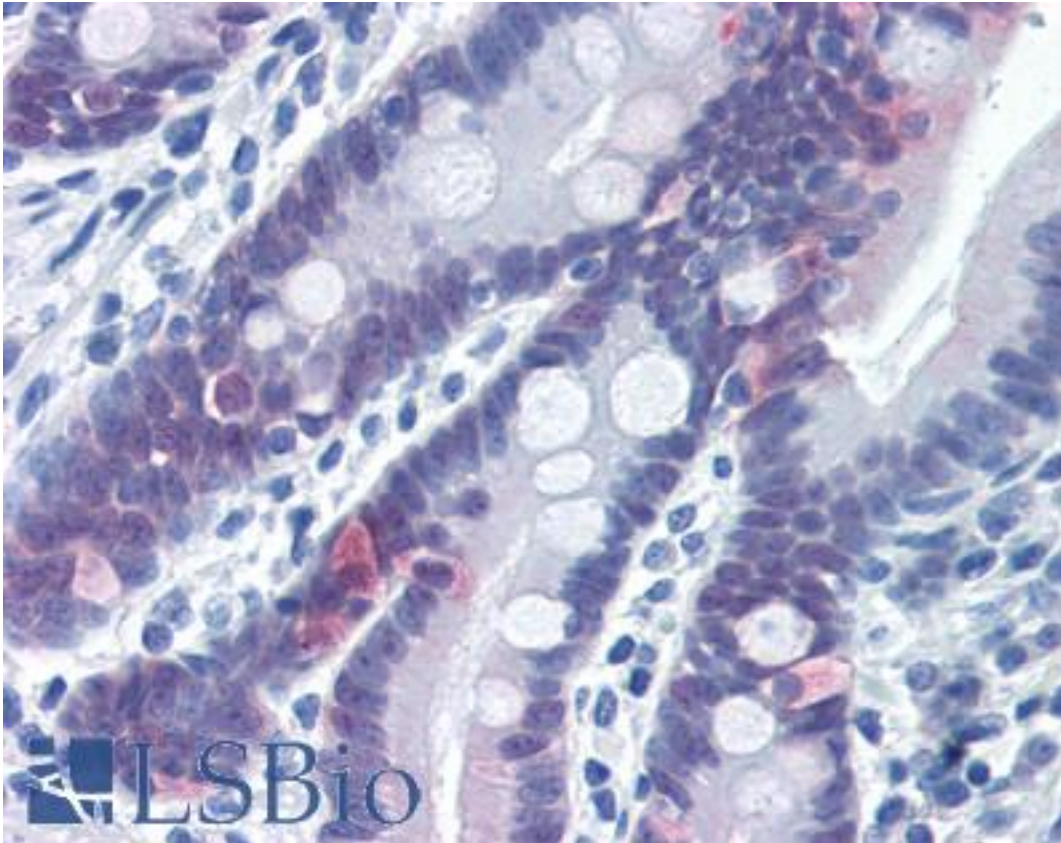


CASP6 / Caspase 6 Rabbit anti-Mouse Polyclonal (Cleavage Site) Antibody - LS-B2679 - LSBio	
<b>CatalogID:</b>	LS-B2679
<b>Validation:</b>	This antibody replaces catalog number LS-C21311. It has been validated for use in the following assays: IHC-P.
<b>Target:</b>	caspase 6, apoptosis-related cysteine peptidase (CASP6)
<b>Synonyms:</b>	CASP6 Antibody, Apoptotic protease Mch-2 Antibody, Caspase 6 Antibody, CASP-6 Antibody, Caspase-6 Antibody, Mch-2 Antibody, MCH2 Antibody
<b>Family / Subfamily:</b>	Protease / Cysteine C14
<b>Host</b>	CASP6 antibody was produced in Rabbit
<b>Clonality:</b>	Polyclonal
<b>Isotype:</b>	IgG
<b>Immunogen Species:</b>	CASP6 / Caspase 6 antibody was raised against Mouse
<b>Antigen Type:</b>	Synthetic peptide
<b>Immunogen:</b>	CASP6 / Caspase 6 antibody was raised against synthetic peptide KLH coupled corresponding to residues surrounding the cleavage site of caspase-6.
<b>Specificity:</b>	Caspase-6 Antibody recognizes endogenous levels of both full length caspase-6 (35kD) and the small subunit of caspase-6 resulting from cleavage at Asp194 (15kD). This antibody does not recognize other caspases. Recognizes human, mouse, rabbit.
<b>Epitope:</b>	Cleavage Site
<b>Reactivity:</b>	Mouse, Human, Rabbit
<b>Purification:</b>	Protein A purified
<b>Presentation:</b>	10 mM HEPES, pH 7.5, 150 mM sodium chloride, 0.1 mg/ml BSA, 50% glycerol. No preservative added.
<b>Recommended Storage:</b>	+4°C or -20°C, Avoid repeated freezing and thawing.
<b>Usage Summary:</b>	Immunohistochemistry: LS-B2679 was validated for use in immunohistochemistry on a panel of 21 formalin-fixed, paraffin-embedded (FFPE) human tissues after heat induced antigen retrieval in pH 6.0 citrate buffer. After incubation with the primary antibody, slides were incubated with biotinylated secondary antibody, followed by alkaline phosphatase-streptavidin and chromogen. The stained slides were evaluated by a pathologist to confirm staining specificity. The optimal working concentration for LS-B2679 was determined to be 5 µg/ml.
<b>Uses:</b>	IHC - Paraffin (5 µg/ml), Western blot (1:1000), ELISA (Optimal dilution to be determined by the researcher)
<b>Size:</b>	50 µl
<b>Concentration:</b>	0.25 mg/ml

**Immunohistochemistry Image:**



Anti-Caspase 6 antibody IHC of human small intestine. Immunohistochemistry of formalin-fixed, paraffin-embedded tissue after heat-induced antigen retrieval. Antibody LS-B2679 concentration 5 ug/ml.

**Requested From:**

Japan

Laboratory Reagent For In Vitro Research Use Only

Not for resale without prior written consent from LifeSpan BioSciences, Inc.

Created on 9/23/2014

© 2014 LifeSpan BioSciences