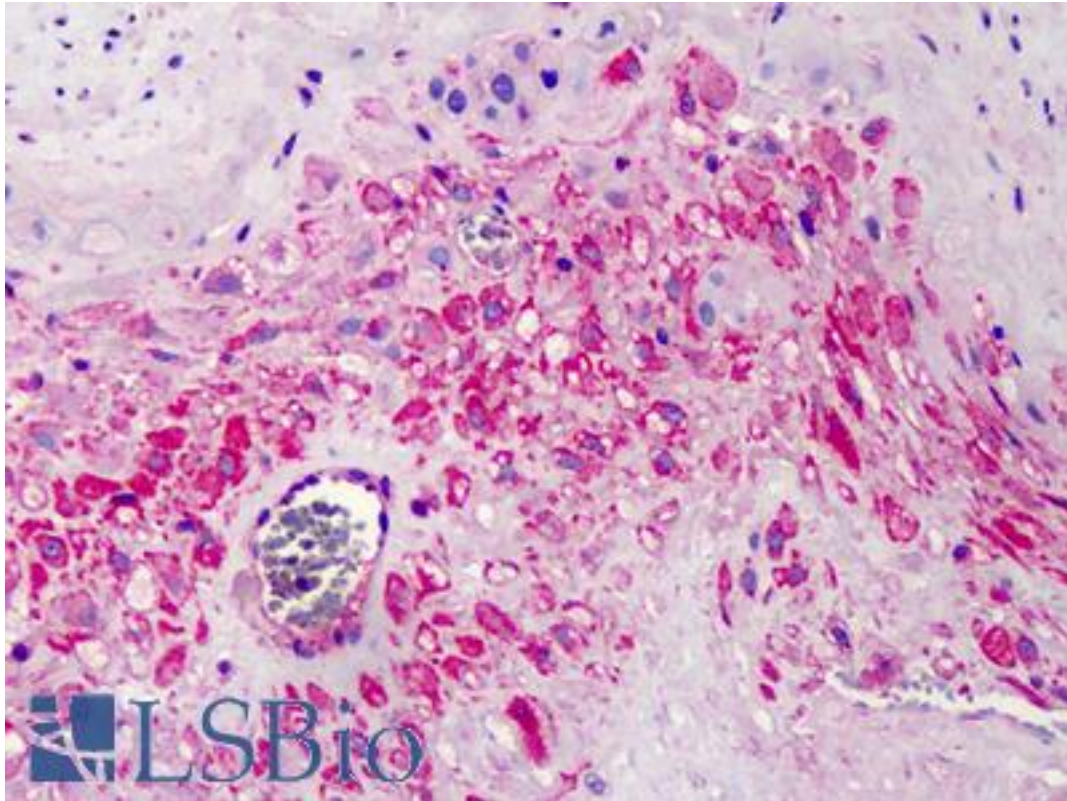


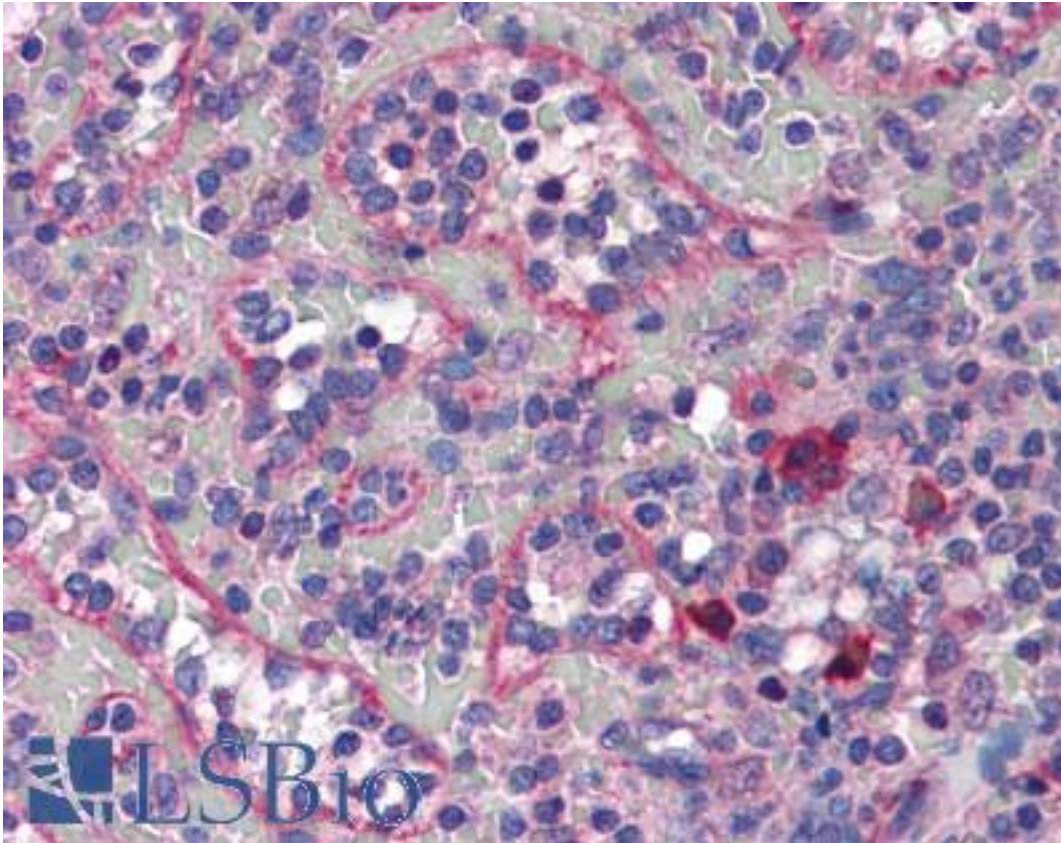
Beta-COP / COPB2 Rabbit anti-Rat Polyclonal (aa494-511) Antibody - LS-B2677 - LSBio	
CatalogID:	LS-B2677
Validation:	This antibody replaces catalog number LS-C14587. It has been validated for use in the following assays: IHC-P.
Target:	coatomer protein complex, subunit beta 2 (beta prime) (COPB2)
Synonyms:	COPB2 Antibody, Betaprime-COP Antibody, Beta'-COP Antibody, Beta-coat protein Antibody, Beta-COP Antibody, p102 Antibody, Coatomer beta' subunit Antibody, Coatomer subunit beta Antibody
Host	COPB2 antibody was produced in Rabbit
Clonality:	Polyclonal
Isotype:	IgG
Immunogen Species:	Beta-COP / COPB2 antibody was raised against Rat
Antigen Type:	Synthetic peptide
Immunogen:	Beta-COP / COPB2 antibody was raised against synthetic peptide: KVLA AQETHEGVTEDGIE, corresponding to amino acids 494-511 of Rat beta COP I. Percent identity by BLAST analysis: Human, Gorilla, Gibbon, Monkey, Marmoset, Mouse, Rat, Elephant, Panda, Dog, Bat, Bovine, Horse, Pig, Opossum, Platypus (100%); Orangutan, Rabbit, Lizard (94%); Chicken (89%); Turkey, Xenopus, Sea anemone (83%).
Specificity:	Detects rat coatomer-protein I beta (COP I beta).
Epitope:	aa494-511
Reactivity:	Rat, Human, Gorilla, Gibbon, Monkey, Mouse, Bat, Bovine, Dog, Horse, Pig
Predicted Reactivity:	Orangutan, Rabbit
Purification:	Immunoaffinity purified
Presentation:	PBS, 1 mg/ml BSA, 0.05% sodium azide.
Recommended Storage:	Long term: Add glycerol (40-50%) -20°C; Short term: +4°C
Usage Summary:	Immunohistochemistry: LS-B2677 was validated for use in immunohistochemistry on a panel of 21 formalin-fixed, paraffin-embedded (FFPE) human tissues after heat induced antigen retrieval in pH 6.0 citrate buffer. After incubation with the primary antibody, slides were incubated with biotinylated secondary antibody, followed by alkaline phosphatase-streptavidin and chromogen. The stained slides were evaluated by a pathologist to confirm staining specificity. The optimal working concentration for LS-B2677 was determined to be 5 ug/ml. Western Blot: 2 ug/ml; Detects an ~115kD protein representing COP I beta from PC-12 cell extract.
Uses:	IHC - Paraffin (5 µg/ml), Western blot (2 µg/ml) (Optimal dilution to be determined by the researcher)
Size:	50 µg
Concentration:	1 mg/ml

Immunohistochemistry Image:



Anti-COPB2 antibody IHC of human placenta. Immunohistochemistry of formalin-fixed, paraffin-embedded tissue after heat-induced antigen retrieval. Antibody LS-B2677 concentration 5 ug/ml.

Immunohistochemistry Image:



Anti-COPB2 antibody IHC of human spleen. Immunohistochemistry of formalin-fixed, paraffin-embedded tissue after heat-induced antigen retrieval. Antibody LS-B2677 concentration 5 ug/ml.

Requested From:

Japan

Laboratory Reagent For In Vitro Research Use Only

Not for resale without prior written consent from LifeSpan BioSciences, Inc.

Created on 9/23/2014

© 2014 LifeSpan BioSciences